

Location: Crook County

Property Types: Residential - All Property Statuses - 0.00 - 0.25, 0.25 - 0.50, 0.50 - 0.75, 0.75 - 1.0, 1.0 - 1.5

Price Range: \$0 - No Limit

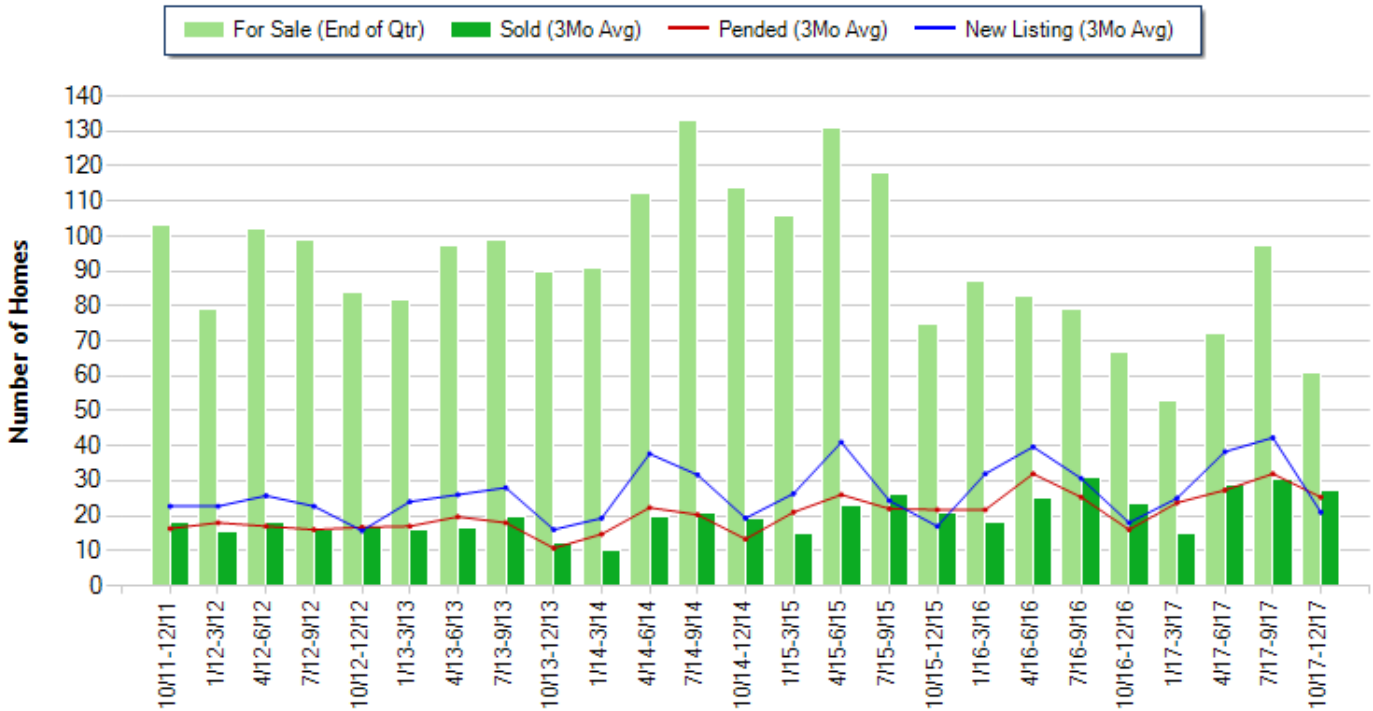
SQFT Range: 0 - No Limit

Bedrooms: 0 - No Limit

Baths: 0 - No Limit

Year Built: 0 - No Limit

**Number of Homes For Sale vs. Sold vs. Pended vs. New Listing - Last 6 years (Quarterly)**



Copyright © Trendgraphix, Inc.

	Curnt vs. Prev Qtr			Curnt vs. Same Qtr 1 Yr Ago			Curnt vs. Same Qtr 6 Yrs Ago			Curnt vs. Same 12 Months 1 Yr Ago			Curnt vs. Same 12 Months 5 Yrs Ago		
	Oct. 17 to Dec. 17	Jul. 17 to Sep. 17	% Change	Oct. 17 to Dec. 17	Oct. 16 to Dec. 16	% Change	Oct. 17 to Dec. 17	Oct. 11 to Dec. 11	% Change	Jan. 17 to Dec. 17	Jan. 16 to Dec. 16	% Change	Jan. 17 to Dec. 17	Jan. 12 to Dec. 12	% Change
For Sale (End of Qtr)	61	97	-37.1% ▼	61	67	-9% ▼	61	103	-40.8% ▼	61	67	-9% ▼	61	84	-27.4% ▼
New Listing	63	127	-50.4% ▼	63	54	16.7% ▲	63	68	-7.4% ▼	380	361	5.3% ▲	380	260	46.2% ▲
Sold	82	91	-9.9% ▼	82	70	17.1% ▲	82	54	51.9% ▲	304	293	3.8% ▲	304	200	52% ▲
Pended	76	96	-20.8% ▼	76	48	58.3% ▲	76	49	55.1% ▲	325	285	14% ▲	325	203	60.1% ▲

	10/11 - 12/11	1/12- 3/12	4/12- 6/12	7/12- 9/12	10/12 - 12/12	1/13- 3/13	4/13- 6/13	7/13- 9/13	10/13 - 12/13	1/14- 3/14	4/14- 6/14	7/14- 9/14	10/14 - 12/14	1/15- 3/15	4/15- 6/15	7/15- 9/15	10/15 - 12/15	1/16- 3/16	4/16- 6/16	7/16- 9/16	10/16 - 12/16	1/17- 3/17	4/17- 6/17	7/17- 9/17	10/17 - 12/17	
For Sale (End of Qtr)	103	79	102	99	84	82	97	99	90	91	112	133	114	106	131	118	75	87	83	79	67	53	72	97	61	
New Listing	68	68	77	68	47	72	78	84	48	58	113	95	58	79	123	73	51	96	119	92	54	75	115	127	63	
New Listing (3Mo Avg)	22.7	22.7	25.7	22.7	15.7	24	26	28	16	19.3	37.7	31.7	19.3	26.3	41	24.3	17	32	39.7	30.7	18	25	38.3	42.3	21	
Sold	54	47	54	48	51	48	49	59	37	31	59	63	58	44	69	79	62	55	75	93	70	45	86	91	82	
Sold (3Mo Avg)	18	15.7	18	16	17	16	16.3	19.7	12.3	10.3	19.7	21	19.3	14.7	23	26.3	20.7	18.3	25	31	23.3	15	28.7	30.3	27.3	
Pended	49	54	51	48	50	51	59	54	32	44	67	61	40	63	78	66	65	65	96	76	48	71	82	96	76	
Pended (3Mo Avg)	16.3	18	17	16	16.7	17	19.7	18	10.7	14.7	22.3	20.3	13.3	21	26	22	21.7	21.7	32	25.3	16	23.7	27.3	32	25.3	
Months of Inventory (Closed Sales)	5.7	5	5.7	6.2	4.9	5.1	6	5	7.3	8.8	5.7	6.3	5.9	7.2	5.7	4.5	3.6	4.8	3.3	2.5	2.9	3.5	2.5	3.2	2.2	
Months of Inventory (Pended Sales)	6.3	4.4	6	6.2	5	4.8	4.9	5.5	8.4	6.2	5	6.6	8.6	5	5	5.4	3.5	4	2.6	3.1	4.2	2.2	2.6	3	2.4	
Absorption Rate (Closed Sales) %	17.5	19.9	17.6	16.2	20.2	19.5	16.8	19.9	13.7	11.3	17.6	15.8	16.9	13.9	17.6	22.3	27.6	21	30.1	39.2	34.8	28.3	39.9	31.2	44.8	
Absorption Rate (Pended Sales) %	15.8	22.8	16.7	16.2	19.9	20.7	20.3	18.2	11.9	16.2	19.9	15.3	11.7	19.8	19.8	18.6	28.9	24.9	38.6	32	23.9	44.7	37.9	33	41.5	
Avg. Active Price	246	252	262	269	262	240	268	280	242	260	274	272	254	302	304	291	304	323	351	354	385	365	383	331	337	
Avg. Sold Price	92	124	114	113	129	119	159	166	175	149	165	184	158	158	186	218	215	165	210	249	237	227	273	264	287	
Avg. Sq. Ft. Price (Sold)	62	75	68	75	84	77	99	104	106	104	110	116	107	108	116	132	125	110	128	140	138	134	163	167	168	
Sold/List Diff. %	97	96	94	96	95	97	96	97	98	95	97	98	97	98	99	98	98	98	98	99	98	97	99	98	97	
Sold/Orig LP Diff. %	87	84	86	91	90	93	94	93	97	90	95	96	91	96	95	96	96	97	98	98	98	96	96	98	95	94
Days on Market	128	135	135	147	150	139	159	152	151	166	153	172	148	120	118	137	138	110	134	139	134	129	114	97	113	
Median	81	80	104	111	90	81	134	130	156	122	135	140	139	141	157	170	163	160	185	202	210	221	210	223	235	

All reports are published January 2018, based on data available at the end of December 2017. All reports presented are based on data supplied by the Central Oregon MLS. Neither the Association nor its MLS guarantees or is in anyway responsible for its accuracy. Data maintained by the Association or its MLS may not reflect all real estate activities in the market. Information deemed reliable but not guaranteed.

**Location:** Crook County

**Property Types:** Residential - All Property Statuses - 1.0 - 1.5, 1.5 - 2.0, 2.0 - 2.5, 2.5 - 3.0, 3.0 - 3.5, 3.5 - 4.0, 4.0 - 4.5, 4.5 - 5.0, 5.0 - 5.5, 5.5 - 6.0, 6.0 - 6.5, 6.5 - 7.0, 7.0 - 7.5, 7.5 - 8.0, 8.0 - 8.5, 8.5 - 9.0, 9.0 - 9.5, 9.5 - 10, 10 - 20, 20 - 30, 30 - 40, 40 - 50, 50 - 60, 60 - 70, 70 - 80, 80 - 90, 90 - 100, 100+

**Price Range:** \$0 - No Limit

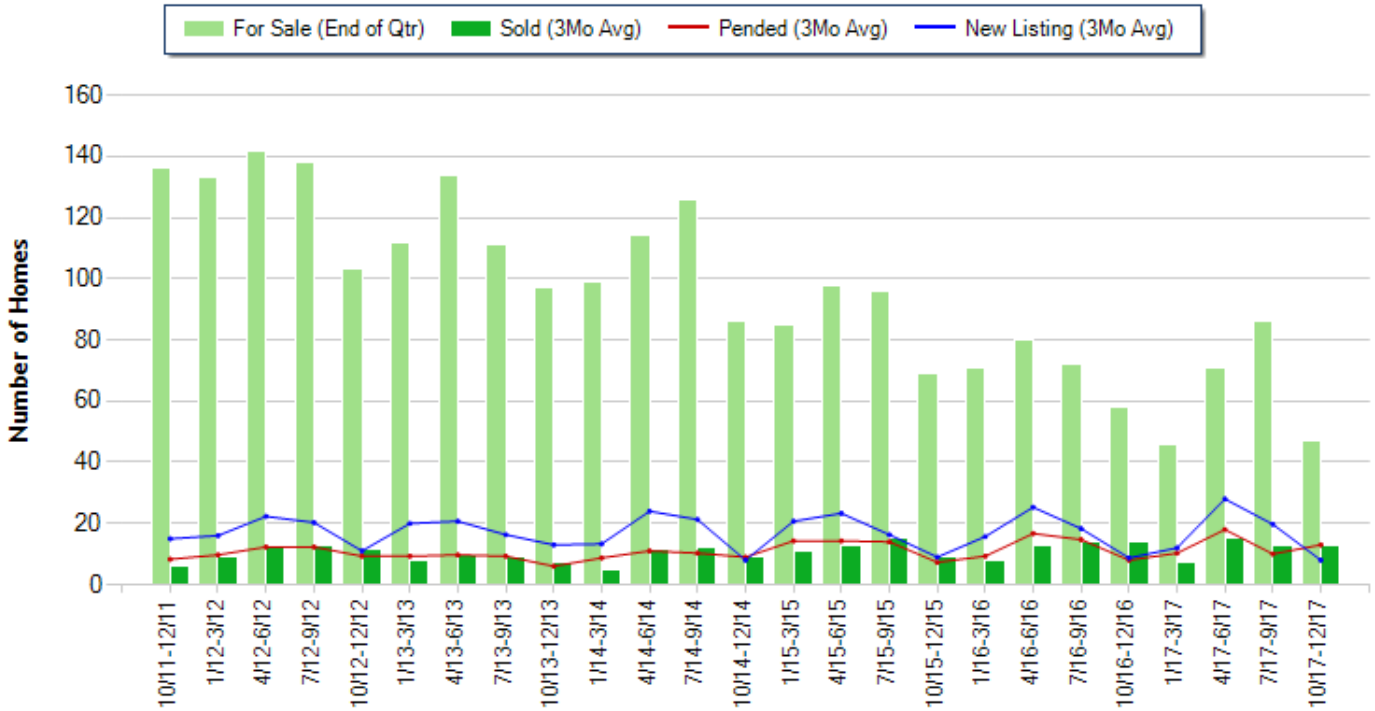
**SQFT Range:** 0 - No Limit

**Bedrooms:** 0 - No Limit

**Baths:** 0 - No Limit

**Year Built:** 0 - No Limit

### Number of Homes For Sale vs. Sold vs. Pended vs. New Listing - Last 6 years (Quarterly)



Copyright © Trendgraphix, Inc.

	Curnt vs. Prev Qtr			Curnt vs. Same Qtr 1 Yr Ago			Curnt vs. Same Qtr 6 Yrs Ago			Curnt vs. Same 12 Months 1 Yr Ago			Curnt vs. Same 12 Months 5 Yrs Ago		
	Oct. 17 to Dec. 17	Jul. 17 to Sep. 17	% Change	Oct. 17 to Dec. 17	Oct. 16 to Dec. 16	% Change	Oct. 17 to Dec. 17	Oct. 11 to Dec. 11	% Change	Jan. 17 to Dec. 17	Jan. 16 to Dec. 16	% Change	Jan. 17 to Dec. 17	Jan. 12 to Dec. 12	% Change
For Sale (End of Qtr)	47	86	-45.3% ▼	47	58	-19% ▼	47	136	-65.4% ▼	47	58	-19% ▼	47	103	-54.4% ▼
New Listing	24	59	-59.3% ▼	24	26	-7.7% ▼	24	45	-46.7% ▼	203	204	0.5% ▼	203	209	-2.9% ▼
Sold	38	38	0% ▲	38	42	-9.5% ▼	38	18	111.1% ▲	143	145	-1.4% ▼	143	135	5.9% ▲
Pended	39	30	30% ▲	39	24	62.5% ▲	39	25	56% ▲	154	146	5.5% ▲	154	131	17.6% ▲

Date	10/11 - 12/11	1/12-3/12	4/12-6/12	7/12-9/12	10/12 - 12/12	1/13-3/13	4/13-6/13	7/13-9/13	10/13 - 12/13	1/14-3/14	4/14-6/14	7/14-9/14	10/14 - 12/14	1/15-3/15	4/15-6/15	7/15-9/15	10/15 - 12/15	1/16-3/16	4/16-6/16	7/16-9/16	10/16 - 12/16	1/17-3/17	4/17-6/17	7/17-9/17	10/17 - 12/17
For Sale (End of Qtr)	136	133	142	138	103	112	134	111	97	99	114	126	86	85	98	96	69	71	80	72	58	46	71	86	47
New Listing	45	48	67	61	33	60	62	49	39	40	72	64	24	62	70	49	27	47	76	55	26	36	84	59	24
New Listing (3Mo Avg)	15	16	22.3	20.3	11	20	20.7	16.3	13	13.3	24	21.3	8	20.7	23.3	16.3	9	15.7	25.3	18.3	8.7	12	28	19.7	8
Sold	18	27	36	38	34	23	30	28	21	15	35	36	27	32	39	46	28	23	38	42	42	21	46	38	38
Sold (3Mo Avg)	6	9	12	12.7	11.3	7.7	10	9.3	7	5	11.7	12	9	10.7	13	15.3	9.3	7.7	12.7	14	14	7	15.3	12.7	12.7
Pended	25	29	37	37	28	28	29	28	18	26	33	31	27	43	43	42	22	28	50	44	24	31	54	30	39
Pended (3Mo Avg)	8.3	9.7	12.3	12.3	9.3	9.3	9.7	9.3	6	8.7	11	10.3	9	14.3	14.3	14	7.3	9.3	16.7	14.7	8	10.3	18	10	13
Months of Inventory (Closed Sales)	22.7	14.8	11.8	10.9	9.1	14.5	13.4	11.9	13.9	19.8	9.7	10.5	9.6	7.9	7.5	6.3	7.4	9.2	6.3	5.1	4.1	6.6	4.6	6.8	3.7
Months of Inventory (Pended Sales)	16.4	13.7	11.5	11.2	11.1	12	13.8	11.9	16.2	11.4	10.4	12.2	9.6	5.9	6.9	6.9	9.5	7.6	4.8	4.9	7.3	4.5	3.9	8.6	3.6
Absorption Rate (Closed Sales) %	4.4	6.8	8.5	9.2	11	6.9	7.5	8.4	7.2	5.1	10.3	9.5	10.5	12.6	13.3	15.9	13.5	10.8	15.9	19.4	24.1	15.2	21.5	14.8	27
Absorption Rate (Pended Sales) %	6.1	7.3	8.7	8.9	9	8.3	7.2	8.4	6.2	8.8	9.6	8.2	10.5	16.8	14.6	14.6	10.6	13.1	20.9	20.4	13.8	22.4	25.4	11.6	27.7
Avg. Active Price	459	482	467	645	780	745	651	655	670	651	646	649	746	793	777	786	874	858	886	715	733	679	618	616	622
Avg. Sold Price	181	223	227	251	239	281	258	298	266	270	330	307	287	340	275	307	322	352	332	406	369	396	533	397	398
Avg. Sq. Ft. Price (Sold)	93	104	108	111	105	125	140	141	135	133	152	150	140	159	133	151	147	159	162	193	165	181	242	186	191
Sold/List Diff. %	97	96	94	95	95	98	95	98	97	94	95	97	96	95	98	97	97	97	97	99	96	97	97	98	97
Sold/Orig LP Diff. %	88	87	84	85	78	89	92	92	89	90	90	94	92	90	93	91	95	94	96	97	92	94	94	95	92
Days on Market	127	151	191	196	219	193	163	195	211	164	236	182	183	202	136	141	132	197	141	162	186	207	138	146	133
Median	149	200	156	244	211	240	249	275	273	289	314	247	275	334	263	285	313	329	290	317	370	350	356	380	383

All reports are published January 2018, based on data available at the end of December 2017. All reports presented are based on data supplied by the Central Oregon MLS. Neither the Association nor its MLS guarantees or is in anyway responsible for its accuracy. Data maintained by the Association or its MLS may not reflect all real estate activities in the market. Information deemed reliable but not guaranteed.

**Location:** Crook County

**Property Types:** Manufactured Home - All Property Statuses - 0.00 - 0.25, 0.25 - 0.50, 0.50 - 0.75, 0.75 - 1.0, 1.0 - 1.5

**Price Range:** \$0 - No Limit

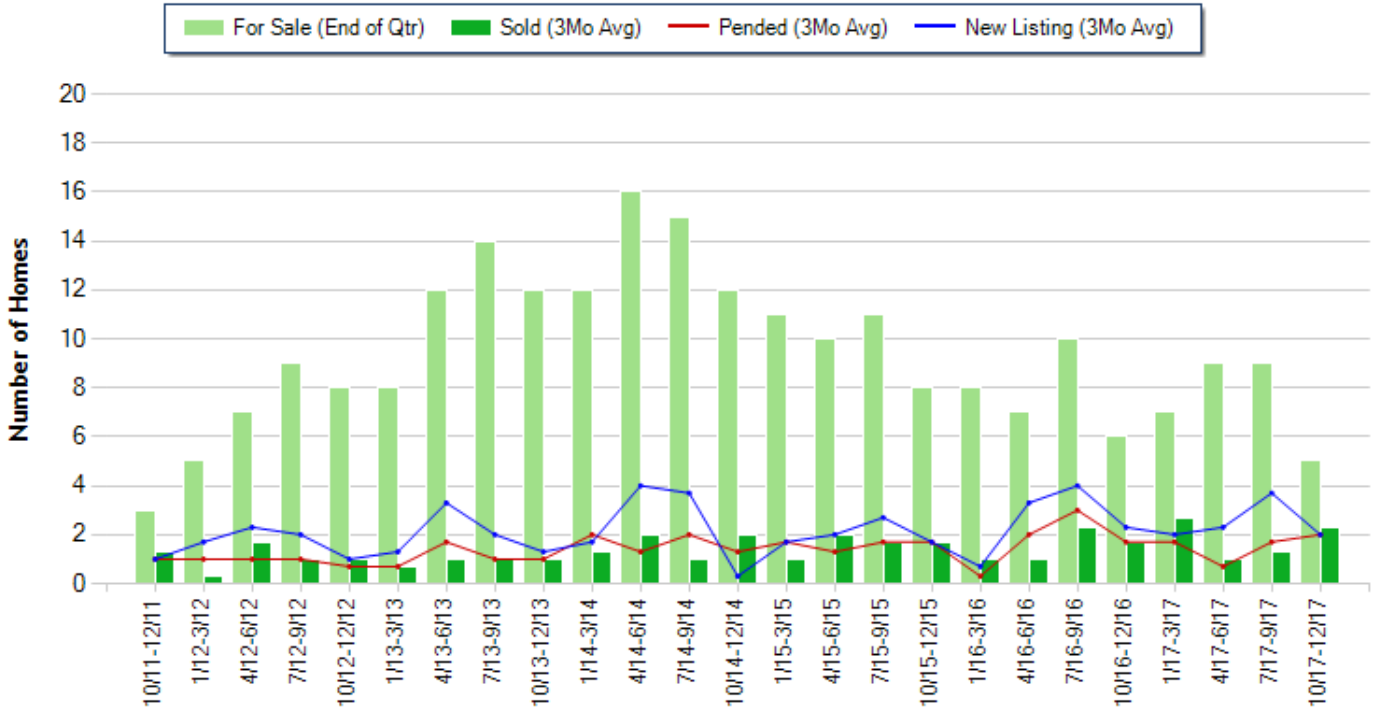
**SQFT Range:** 0 - No Limit

**Bedrooms:** 0 - No Limit

**Baths:** 0 - No Limit

**Year Built:** 0 - No Limit

**Number of Homes For Sale vs. Sold vs. Pended vs. New Listing - Last 6 years (Quarterly)**



Copyright © Trendgraphix, Inc.

	Curnt vs. Prev Qtr			Curnt vs. Same Qtr 1 Yr Ago			Curnt vs. Same Qtr 6 Yrs Ago			Curnt vs. Same 12 Months 1 Yr Ago			Curnt vs. Same 12 Months 5 Yrs Ago		
	Oct. 17 to Dec. 17	Jul. 17 to Sep. 17	% Change	Oct. 17 to Dec. 17	Oct. 16 to Dec. 16	% Change	Oct. 17 to Dec. 17	Oct. 11 to Dec. 11	% Change	Jan. 17 to Dec. 17	Jan. 16 to Dec. 16	% Change	Jan. 17 to Dec. 17	Jan. 12 to Dec. 12	% Change
For Sale (End of Qtr)	5	9	-44.4% ▼	5	6	-16.7% ▼	5	3	66.7% ▲	5	6	-16.7% ▼	5	8	-37.5% ▼
New Listing	6	11	-45.5% ▼	6	7	-14.3% ▼	6	3	100% ▲	30	31	-3.2% ▼	30	21	42.9% ▲
Sold	7	4	75% ▲	7	5	40% ▲	7	4	75% ▲	22	18	22.2% ▲	22	12	83.3% ▲
Pended	6	5	20% ▲	6	5	20% ▲	6	3	100% ▲	18	21	-14.3% ▼	18	11	63.6% ▲

Date	10/11 - 12/11	1/12- 3/12	4/12- 6/12	7/12- 9/12	10/12 - 12/12	1/13- 3/13	4/13- 6/13	7/13- 9/13	10/13 - 12/13	1/14- 3/14	4/14- 6/14	7/14- 9/14	10/14 - 12/14	1/15- 3/15	4/15- 6/15	7/15- 9/15	10/15 - 12/15	1/16- 3/16	4/16- 6/16	7/16- 9/16	10/16 - 12/16	1/17- 3/17	4/17- 6/17	7/17- 9/17	10/17 - 12/17
For Sale (End of Qtr)	3	5	7	9	8	8	12	14	12	12	16	15	12	11	10	11	8	8	7	10	6	7	9	9	5
New Listing	3	5	7	6	3	4	10	6	4	5	12	11	1	5	6	8	5	2	10	12	7	6	7	11	6
New Listing (3Mo Avg)	1	1.7	2.3	2	1	1.3	3.3	2	1.3	1.7	4	3.7	0.3	1.7	2	2.7	1.7	0.7	3.3	4	2.3	2	2.3	3.7	2
Sold	4	1	5	3	3	2	3	3	3	4	6	3	6	3	6	5	5	3	3	7	5	8	3	4	7
Sold (3Mo Avg)	1.3	0.3	1.7	1	1	0.7	1	1	1	1.3	2	1	2	1	2	1.7	1.7	1	1	2.3	1.7	2.7	1	1.3	2.3
Pended	3	3	3	3	2	2	5	3	3	6	4	6	4	5	4	5	5	1	6	9	5	5	2	5	6
Pended (3Mo Avg)	1	1	1	1	0.7	0.7	1.7	1	1	2	1.3	2	1.3	1.7	1.3	1.7	1.7	0.3	2	3	1.7	1.7	0.7	1.7	2
Months of Inventory (Closed Sales)	2.3	16.7	4.1	9	8	11.4	12	14	12	9.2	8	15	6	11	5	6.5	4.7	8	7	4.3	3.5	2.6	9	6.9	2.2
Months of Inventory (Pended Sales)	3	5	7	9	11.4	11.4	7.1	14	12	6	12.3	7.5	9.2	6.5	7.7	6.5	4.7	26.7	3.5	3.3	3.5	4.1	12.9	5.3	2.5
Absorption Rate (Closed Sales) %	43.3	6	24.3	11.1	12.5	8.8	8.3	7.1	8.3	10.8	12.5	6.7	16.7	9.1	20	15.5	21.3	12.5	14.3	23	28.3	38.6	11.1	14.4	46
Absorption Rate (Pended Sales) %	33.3	20	14.3	11.1	8.8	8.8	14.2	7.1	8.3	16.7	8.1	13.3	10.8	15.5	13	15.5	21.3	3.8	28.6	30	28.3	24.3	7.8	18.9	40
Avg. Active Price	63	65	108	135	80	94	122	120	124	119	129	129	132	129	133	155	136	177	148	182	163	140	163	141	167
Avg. Sold Price	78	74	53	94	86	33	55	106	93	86	107	126	98	88	108	93	106	118	139	157	146	152	184	203	149
Avg. Sq. Ft. Price (Sold)	56	66	40	84	55	24	52	61	82	67	88	101	76	82	79	81	77	110	95	127	106	112	149	164	113
Sold/List Diff. %	94	94	94	89	93	88	86	94	95	100	97	96	95	97	100	96	99	92	97	98	98	93	101	98	95
Sold/Orig LP Diff. %	95	94	91	87	86	68	86	95	87	97	92	95	89	103	98	94	97	92	98	96	98	91	101	92	94
Days on Market	92	85	115	82	152	146	54	65	190	190	215	164	159	144	145	198	87	250	55	110	160	125	143	137	70
Median	67	74	52	105	65	33	64	113	80	89	115	115	88	100	109	80	128	119	153	149	140	155	155	216	159

All reports are published January 2018, based on data available at the end of December 2017. All reports presented are based on data supplied by the Central Oregon MLS. Neither the Association nor its MLS guarantees or is in anyway responsible for its accuracy. Data maintained by the Association or its MLS may not reflect all real estate activities in the market. Information deemed reliable but not guaranteed.

**Location:** Crook County

**Property Types:** Manufactured Home - All Property Statuses - 1.0 - 1.5, 1.5 - 2.0, 2.0 - 2.5, 2.5 - 3.0, 3.0 - 3.5, 3.5 - 4.0, 4.0 - 4.5, 4.5 - 5.0, 5.0 - 5.5, 5.5 - 6.0, 6.0 - 6.5, 6.5 - 7.0, 7.0 - 7.5, 7.5 - 8.0, 8.0 - 8.5, 8.5 - 9.0, 9.0 - 9.5, 9.5 - 10, 10 - 20, 20 - 30, 30 - 40, 40 - 50, 50 - 60, 60 - 70, 70 - 80, 80 - 90, 90 - 100, 100+

**Price Range:** \$0 - No Limit

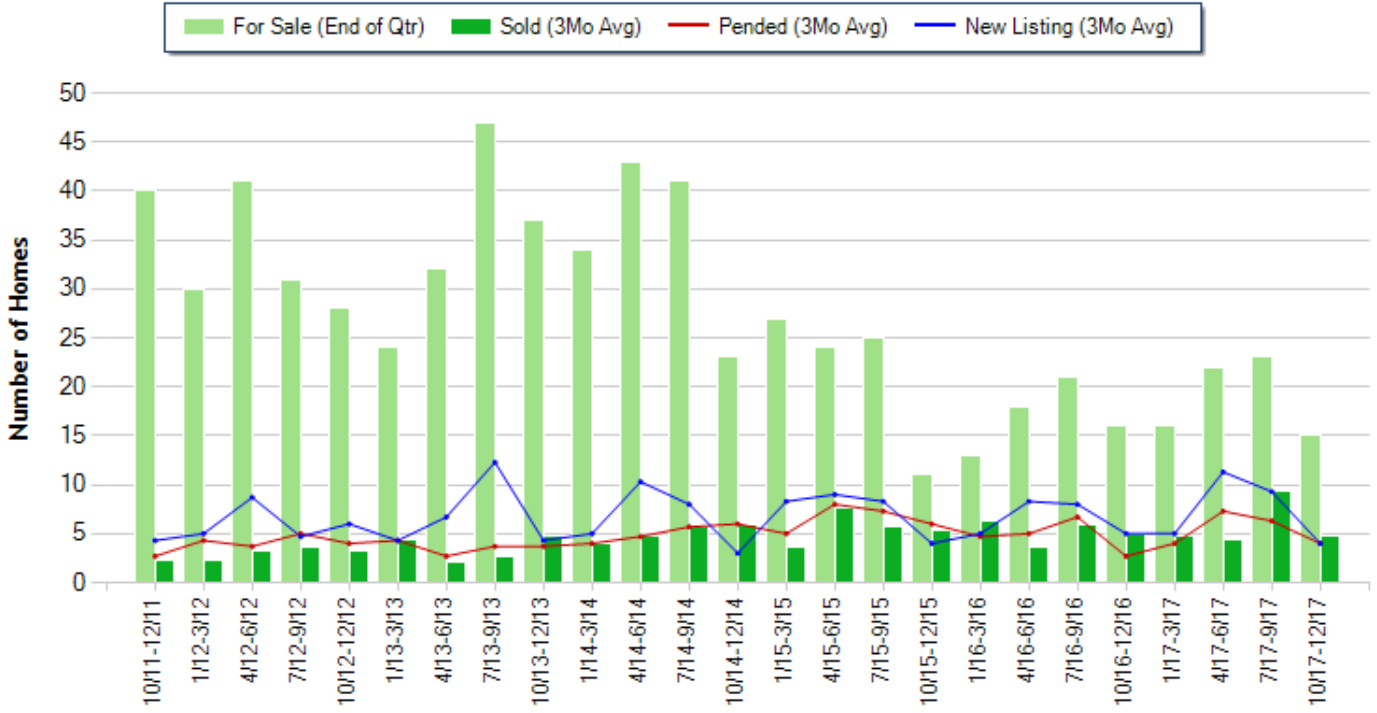
**SQFT Range:** 0 - No Limit

**Bedrooms:** 0 - No Limit

**Baths:** 0 - No Limit

**Year Built:** 0 - No Limit

**Number of Homes For Sale vs. Sold vs. Pended vs. New Listing - Last 6 years (Quarterly)**



Copyright © Trendgraphix, Inc.

	Curnt vs. Prev Qtr			Curnt vs. Same Qtr 1 Yr Ago			Curnt vs. Same Qtr 6 Yrs Ago			Curnt vs. Same 12 Months 1 Yr Ago			Curnt vs. Same 12 Months 5 Yrs Ago		
	Oct. 17 to Dec. 17	Jul. 17 to Sep. 17	% Change	Oct. 17 to Dec. 17	Oct. 16 to Dec. 16	% Change	Oct. 17 to Dec. 17	Oct. 11 to Dec. 11	% Change	Jan. 17 to Dec. 17	Jan. 16 to Dec. 16	% Change	Jan. 17 to Dec. 17	Jan. 12 to Dec. 12	% Change
For Sale (End of Qtr)	15	23	-34.8% ▼	15	16	-6.2% ▼	15	40	-62.5% ▼	15	16	-6.2% ▼	15	28	-46.4% ▼
New Listing	12	28	-57.1% ▼	12	15	-20% ▼	12	13	-7.7% ▼	89	79	12.7% ▲	89	73	21.9% ▲
Sold	14	28	-50% ▼	14	15	-6.7% ▼	14	7	100% ▲	69	63	9.5% ▲	69	38	81.6% ▲
Pended	12	19	-36.8% ▼	12	8	50% ▲	12	8	50% ▲	65	57	14% ▲	65	51	27.5% ▲

Date	10/11 - 12/11	1/12-3/12	4/12-6/12	7/12-9/12	10/12 - 12/12	1/13-3/13	4/13-6/13	7/13-9/13	10/13 - 12/13	1/14-3/14	4/14-6/14	7/14-9/14	10/14 - 12/14	1/15-3/15	4/15-6/15	7/15-9/15	10/15 - 12/15	1/16-3/16	4/16-6/16	7/16-9/16	10/16 - 12/16	1/17-3/17	4/17-6/17	7/17-9/17	10/17 - 12/17
For Sale (End of Qtr)	40	30	41	31	28	24	32	47	37	34	43	41	23	27	24	25	11	13	18	21	16	16	22	23	15
New Listing	13	15	26	14	18	13	20	37	13	15	31	24	9	25	27	25	12	15	25	24	15	15	34	28	12
New Listing (3Mo Avg)	4.3	5	8.7	4.7	6	4.3	6.7	12.3	4.3	5	10.3	8	3	8.3	9	8.3	4	5	8.3	8	5	5	11.3	9.3	4
Sold	7	7	10	11	10	13	6	8	14	12	14	17	18	11	23	17	16	19	11	18	15	14	13	28	14
Sold (3Mo Avg)	2.3	2.3	3.3	3.7	3.3	4.3	2	2.7	4.7	4	4.7	5.7	6	3.7	7.7	5.7	5.3	6.3	3.7	6	5	4.7	4.3	9.3	4.7
Pended	8	13	11	15	12	13	8	11	11	12	14	17	18	15	24	22	18	14	15	20	8	12	22	19	12
Pended (3Mo Avg)	2.7	4.3	3.7	5	4	4.3	2.7	3.7	3.7	4	4.7	5.7	6	5	8	7.3	6	4.7	5	6.7	2.7	4	7.3	6.3	4
Months of Inventory (Closed Sales)	17.4	13	12.4	8.4	8.5	5.6	16	17.4	7.9	8.5	9.1	7.2	3.8	7.3	3.1	4.4	2.1	4.9	3.5	3.2	3.4	5.1	2.5	3.2	
Months of Inventory (Pended Sales)	14.8	7	11.1	6.2	7	5.6	11.9	12.7	10	8.5	9.1	7.2	3.8	5.4	3	3.4	1.8	2.8	3.6	3.1	5.9	4	3	3.7	3.8
Absorption Rate (Closed Sales) %	5.8	7.7	8	11.9	11.8	17.9	6.3	5.7	12.7	11.8	10.9	13.9	26.1	13.7	32.1	22.8	48.2	48.5	20.6	28.6	31.3	29.4	19.5	40.4	31.3
Absorption Rate (Pended Sales) %	6.8	14.3	9	16.1	14.3	17.9	8.4	7.9	10	11.8	10.9	13.9	26.1	18.5	33.3	29.2	54.5	36.2	27.8	31.9	16.9	25	33.2	27.4	26.7
Avg. Active Price	178	199	195	182	171	171	202	188	181	180	169	187	219	182	209	224	255	244	224	268	227	255	229	251	262
Avg. Sold Price	90	84	108	97	111	121	102	157	145	153	166	141	142	143	181	158	154	170	197	171	186	143	193	233	214
Avg. Sq. Ft. Price (Sold)	58	62	80	67	69	74	68	87	90	94	94	92	94	101	121	118	105	115	124	122	116	109	139	151	143
Sold/List Diff. %	96	77	92	87	92	95	91	97	96	97	97	95	98	99	97	97	96	93	98	99	97	95	99	96	96
Sold/Orig LP Diff. %	86	70	81	82	90	90	90	85	91	87	94	93	89	87	95	96	92	90	94	94	93	95	98	92	92
Days on Market	162	166	153	152	158	156	199	222	179	165	198	186	190	219	150	126	147	185	121	120	127	159	115	97	100
Median	90	57	102	75	105	130	64	153	109	151	174	135	147	134	154	141	152	168	161	173	197	124	189	230	190

All reports are published January 2018, based on data available at the end of December 2017. All reports presented are based on data supplied by the Central Oregon MLS. Neither the Association nor its MLS guarantees or is in anyway responsible for its accuracy. Data maintained by the Association or its MLS may not reflect all real estate activities in the market. Information deemed reliable but not guaranteed.

**Location:** Crook County

**Property Types:** Farm - All Property Statuses - All Lot Sizes

**Price Range:** \$0 - No Limit

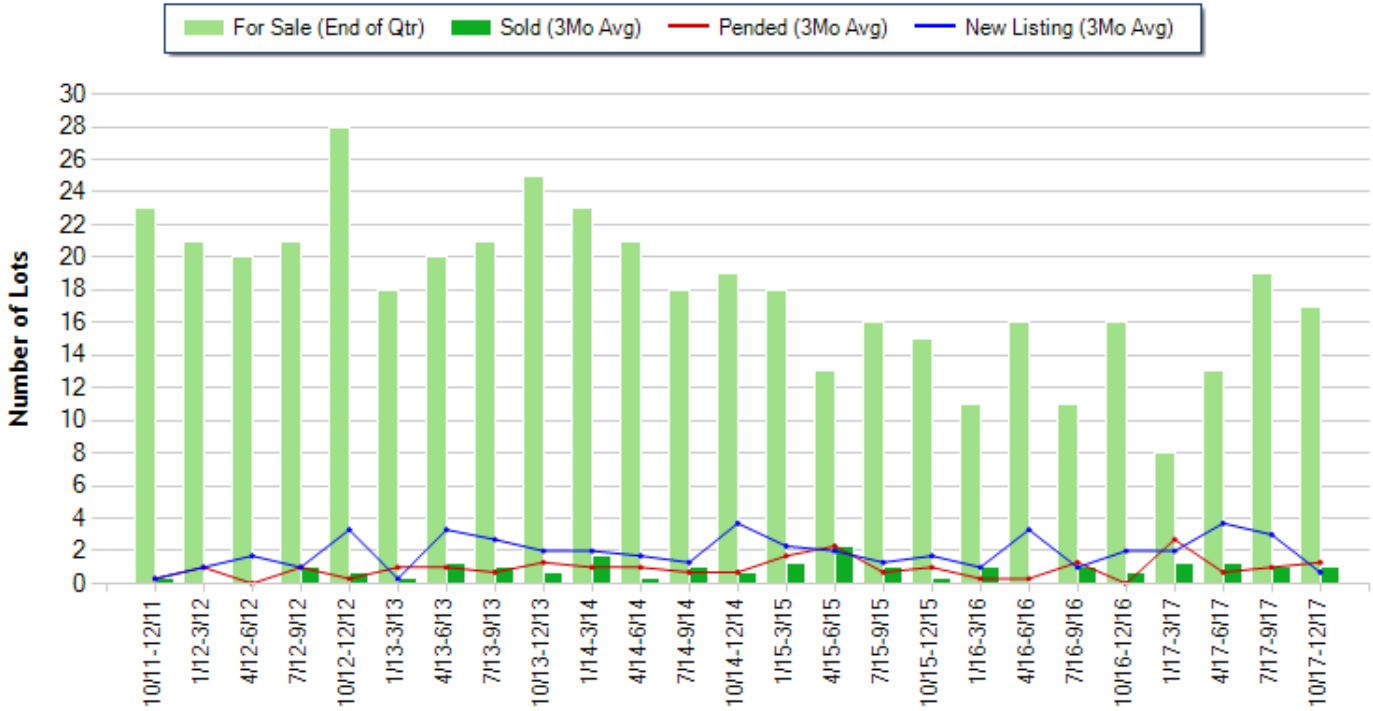
**SQFT Range:** 0 - No Limit

**Bedrooms:** 0 - No Limit

**Baths:** 0 - No Limit

**Year Built:** 0 - No Limit

**Number of Homes For Sale vs. Sold vs. Pended vs. New Listing - Last 6 years (Quarterly)**



Copyright © Trendgraphix, Inc.

	Curnt vs. Prev Qtr			Curnt vs. Same Qtr 1 Yr Ago			Curnt vs. Same Qtr 6 Yrs Ago			Curnt vs. Same 12 Months 1 Yr Ago			Curnt vs. Same 12 Months 5 Yrs Ago		
	Oct. 17 to Dec. 17	Jul. 17 to Sep. 17	% Change	Oct. 17 to Dec. 17	Oct. 16 to Dec. 16	% Change	Oct. 17 to Dec. 17	Oct. 11 to Dec. 11	% Change	Jan. 17 to Dec. 17	Jan. 16 to Dec. 16	% Change	Jan. 17 to Dec. 17	Jan. 12 to Dec. 12	% Change
For Sale (End of Qtr)	17	19	-10.5% ▼	17	16	6.3% ▲	17	23	-26.1% ▼	17	16	6.3% ▲	17	28	-39.3% ▼
New Listing	2	9	-77.8% ▼	2	6	-66.7% ▼	2	1	100% ▲	28	22	27.3% ▲	28	21	33.3% ▲
Sold	3	3	0%	3	2	50% ▲	3	1	200% ▲	14	8	75% ▲	14	5	180% ▲
Pended	4	3	33.3% ▲	4	0	N/A	4	1	300% ▲	17	6	183.3% ▲	17	7	142.9% ▲

Date	10/11 - 12/11	1/12- 3/12	4/12- 6/12	7/12- 9/12	10/12 - 12/12	1/13- 3/13	4/13- 6/13	7/13- 9/13	10/13 - 12/13	1/14- 3/14	4/14- 6/14	7/14- 9/14	10/14 - 12/14	1/15- 3/15	4/15- 6/15	7/15- 9/15	10/15 - 12/15	1/16- 3/16	4/16- 6/16	7/16- 9/16	10/16 - 12/16	1/17- 3/17	4/17- 6/17	7/17- 9/17	10/17 - 12/17
For Sale (End of Qtr)	23	21	20	21	28	18	20	21	25	23	21	18	19	18	13	16	15	11	16	11	16	8	13	19	17
New Listing	1	3	5	3	10	1	10	8	6	6	5	4	11	7	6	4	5	3	10	3	6	6	11	9	2
New Listing (3Mo Avg)	0.3	1	1.7	1	3.3	0.3	3.3	2.7	2	2	1.7	1.3	3.7	2.3	2	1.3	1.7	1	3.3	1	2	2	3.7	3	0.7
Sold	1	0	0	3	2	1	4	3	2	5	1	3	2	4	7	3	1	3	0	3	2	4	4	3	3
Sold (3Mo Avg)	0.3	0	0	1	0.7	0.3	1.3	1	0.7	1.7	0.3	1	0.7	1.3	2.3	1	0.3	1	0	1	0.7	1.3	1.3	1	1
Pended	1	3	0	3	1	3	3	2	4	3	3	2	2	5	7	2	3	1	1	4	0	8	2	3	4
Pended (3Mo Avg)	0.3	1	0	1	0.3	1	1	0.7	1.3	1	1	0.7	0.7	1.7	2.3	0.7	1	0.3	0.3	1.3	0	2.7	0.7	1	1.3
Months of Inventory (Closed Sales)	76.7	21	20	21	40	60	15.4	21	35.7	13.5	70	18	27.1	13.8	5.7	16	50	11	16	11	22.9	6.2	10	19	17
Months of Inventory (Pended Sales)	76.7	21	20	21	93.3	18	20	30	19.2	23	21	25.7	27.1	10.6	5.7	22.9	15	36.7	53.3	8.5	16	3	18.6	19	13.1
Absorption Rate (Closed Sales) %	1.3	0	0	4.8	2.5	1.7	6.5	4.8	2.8	7.4	1.4	5.6	3.7	7.2	17.7	6.3	2	9.1	0	9.1	4.4	16.3	10	5.3	5.9
Absorption Rate (Pended Sales) %	1.3	4.8	0	4.8	1.1	5.6	5	3.3	5.2	4.3	4.8	3.9	3.7	9.4	17.7	4.4	6.7	2.7	1.9	11.8	0	33.8	5.4	5.3	7.6
Avg. Active Price	1590	0	0	1462	1584	1350	2048	1902	1706	1561	1634	2079	1559	1783	1767	1810	1972	1699	0	1835	1682	1852	2488	2197	2200
Avg. Sold Price	910	0	0	2733	775	589	822	702	748	835	150	653	1925	419	1010	1198	1475	875	0	2025	2288	1991	1359	1183	1450
Avg. Sq. Ft. Price (Sold)	522	0	0	1390	246	280	392	470	254	608	0	367	674	176	524	397	847	678	0	674	120	589	506	393	664
Sold/List Diff. %	91	0	0	85	83	98	92	93	100	85	76	81	97	81	91	96	82	92	0	91	93	88	91	97	87
Sold/Orig LP Diff. %	53	0	0	83	75	98	80	84	94	85	76	78	97	81	89	88	82	89	0	81	80	86	87	97	95
Days on Market	307	0	0	224	143	246	298	439	425	228	153	338	18	305	228	479	34	222	0	372	355	237	165	140	159
Median	910	0	0	3100	775	589	402	475	748	750	150	620	1925	420	1195	1195	1475	612	0	1075	2288	2042	913	1000	1575

All reports are published January 2018, based on data available at the end of December 2017. All reports presented are based on data supplied by the Central Oregon MLS. Neither the Association nor its MLS guarantees or is in anyway responsible for its accuracy. Data maintained by the Association or its MLS may not reflect all real estate activities in the market. Information deemed reliable but not guaranteed.

Location: Crook County

Property Types: Multi Family - All Property Statuses - All Lot Sizes

Price Range: \$0 - No Limit

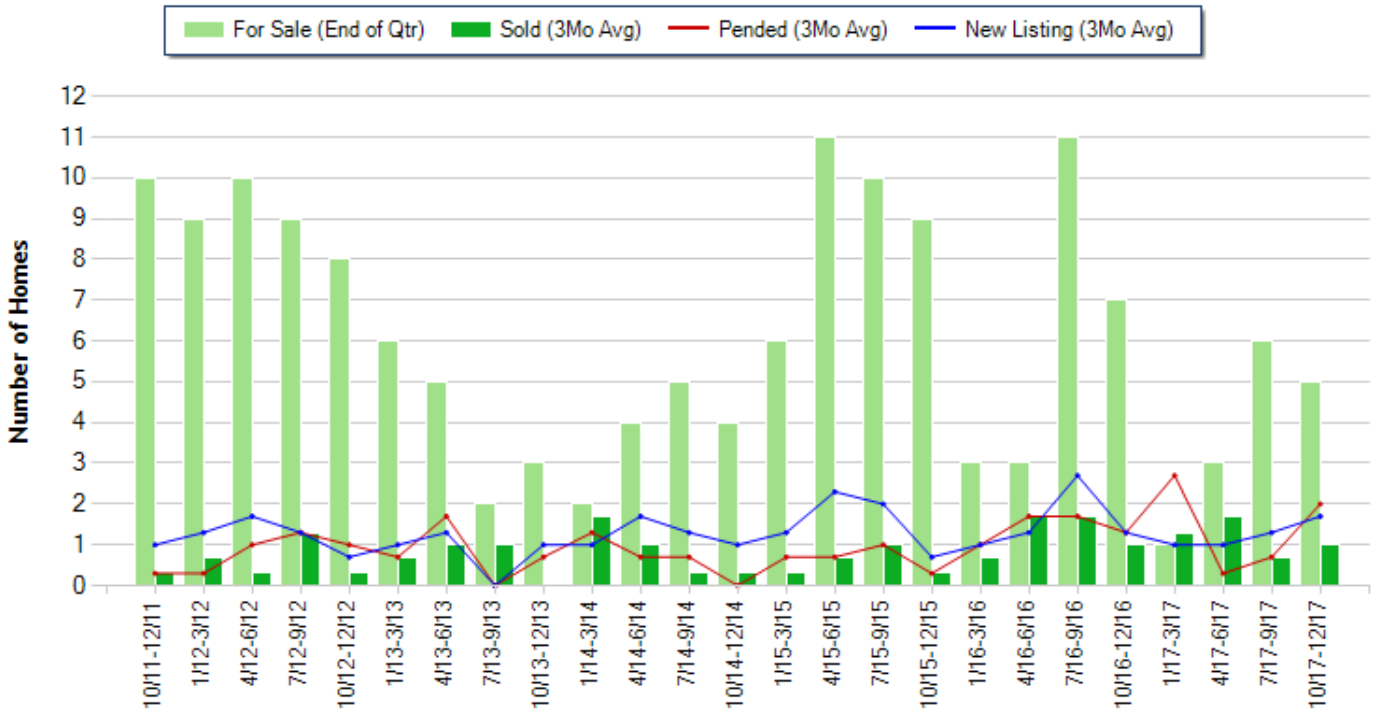
SQFT Range: 0 - No Limit

Bedrooms: 0 - No Limit

Baths: 0 - No Limit

Year Built: 0 - No Limit

Number of Homes For Sale vs. Sold vs. Pended vs. New Listing - Last 6 years (Quarterly)



Copyright © Trendgraphix, Inc.

	Curnt vs. Prev Qtr			Curnt vs. Same Qtr 1 Yr Ago			Curnt vs. Same Qtr 6 Yrs Ago			Curnt vs. Same 12 Months 1 Yr Ago			Curnt vs. Same 12 Months 5 Yrs Ago		
	Oct. 17 to Dec. 17	Jul. 17 to Sep. 17	% Change	Oct. 17 to Dec. 17	Oct. 16 to Dec. 16	% Change	Oct. 17 to Dec. 17	Oct. 11 to Dec. 11	% Change	Jan. 17 to Dec. 17	Jan. 16 to Dec. 16	% Change	Jan. 17 to Dec. 17	Jan. 12 to Dec. 12	% Change
For Sale (End of Qtr)	5	6	-16.7% ▼	5	7	-28.6% ▼	5	10	-50% ▼	5	7	-28.6% ▼	5	8	-37.5% ▼
New Listing	5	4	25% ▲	5	4	25% ▲	5	3	66.7% ▲	15	19	-21.1% ▼	15	15	0%
Sold	3	2	50% ▲	3	3	0%	3	1	200% ▲	14	15	-6.7% ▼	14	8	75% ▲
Pended	6	2	200% ▲	6	4	50% ▲	6	1	500% ▲	17	17	0%	17	11	54.5% ▲

Date	10/11 - 12/11	1/12- 3/12	4/12- 6/12	7/12- 9/12	10/12 - 12/12	1/13- 3/13	4/13- 6/13	7/13- 9/13	10/13 - 12/13	1/14- 3/14	4/14- 6/14	7/14- 9/14	10/14 - 12/14	1/15- 3/15	4/15- 6/15	7/15- 9/15	10/15 - 12/15	1/16- 3/16	4/16- 6/16	7/16- 9/16	10/16 - 12/16	1/17- 3/17	4/17- 6/17	7/17- 9/17	10/17 - 12/17
For Sale (End of Qtr)	10	9	10	9	8	6	5	2	3	2	4	5	4	6	11	10	9	3	3	11	7	1	3	6	5
New Listing	3	4	5	4	2	3	4	0	3	3	5	4	3	4	7	6	2	3	4	8	4	3	3	4	5
New Listing (3Mo Avg)	1	1.3	1.7	1.3	0.7	1	1.3	0	1	1	1.7	1.3	1	1.3	2.3	2	0.7	1	1.3	2.7	1.3	1	1	1.3	1.7
Sold	1	2	1	4	1	2	3	3	0	5	3	1	1	1	2	3	1	2	5	5	3	4	5	2	3
Sold (3Mo Avg)	0.3	0.7	0.3	1.3	0.3	0.7	1	1	0	1.7	1	0.3	0.3	0.7	1	0.3	0.7	1.7	1.7	1	1.3	1.7	0.7	1	1
Pended	1	1	3	4	3	2	5	0	2	4	2	2	0	2	2	3	1	3	5	5	4	8	1	2	6
Pended (3Mo Avg)	0.3	0.3	1	1.3	1	0.7	1.7	0	0.7	1.3	0.7	0.7	0	0.7	0.7	1	0.3	1	1.7	1.7	1.3	2.7	0.3	0.7	2
Months of Inventory (Closed Sales)	33.3	12.9	33.3	6.9	26.7	8.6	5	2	3	1.2	4	16.7	13.3	20	15.7	10	30	4.3	1.8	6.5	7	0.8	1.8	8.6	5
Months of Inventory (Pended Sales)	33.3	30	10	6.9	8	8.6	2.9	2	4.3	1.5	5.7	7.1	4	8.6	15.7	10	30	3	1.8	6.5	5.4	0.4	10	8.6	2.5
Absorption Rate (Closed Sales) %	3	7.8	3	14.4	3.8	11.7	20	50	0	85	25	6	7.5	5	6.4	10	3.3	23.3	56.7	15.5	14.3	130	56.7	11.7	20
Absorption Rate (Pended Sales) %	3	3.3	10	14.4	12.5	11.7	34	0	23.3	65	17.5	14	0	11.7	6.4	10	3.3	33.3	56.7	15.5	18.6	270	10	11.7	40
Avg. Active Price	308	237	218	157	199	226	362	505	0	353	448	293	197	185	191	189	253	153	152	236	325	695	401	464	471
Avg. Sold Price	540	43	108	150	95	134	139	104	0	90	109	170	202	185	116	163	752	419	170	208	140	165	293	216	353
Avg. Sq. Ft. Price (Sold)	25	33	57	42	42	52	57	44	0	47	70	84	69	82	49	81	89	451	71	76	86	76	79	104	99
Sold/List Diff. %	94	100	90	96	86	96	93	102	0	101	88	97	90	94	87	95	99	103	100	96	94	86	96	98	98
Sold/Orig LP Diff. %	94	88	62	91	50	91	95	113	0	88	85	97	90	94	88	88	100	92	100	93	91	83	96	98	98
Days on Market	87	102	836	126	125	274	98	172	0	198	135	82	74	136	78	164	120	288	122	179	106	148	183	124	212
Median	540	43	108	157	95	134	140	80	0	75	112	170	203	185	115	159	753	419	170	194	137	185	207	216	220

All reports are published January 2018, based on data available at the end of December 2017. All reports presented are based on data supplied by the Central Oregon MLS. Neither the Association nor its MLS guarantees or is in anyway responsible for its accuracy. Data maintained by the Association or its MLS may not reflect all real estate activities in the market. Information deemed reliable but not guaranteed.



**Location:** Crook County

**Property Types:** All Land Prop - All Property Statuses - All Lot Sizes

**Price Range:** \$0 - No Limit

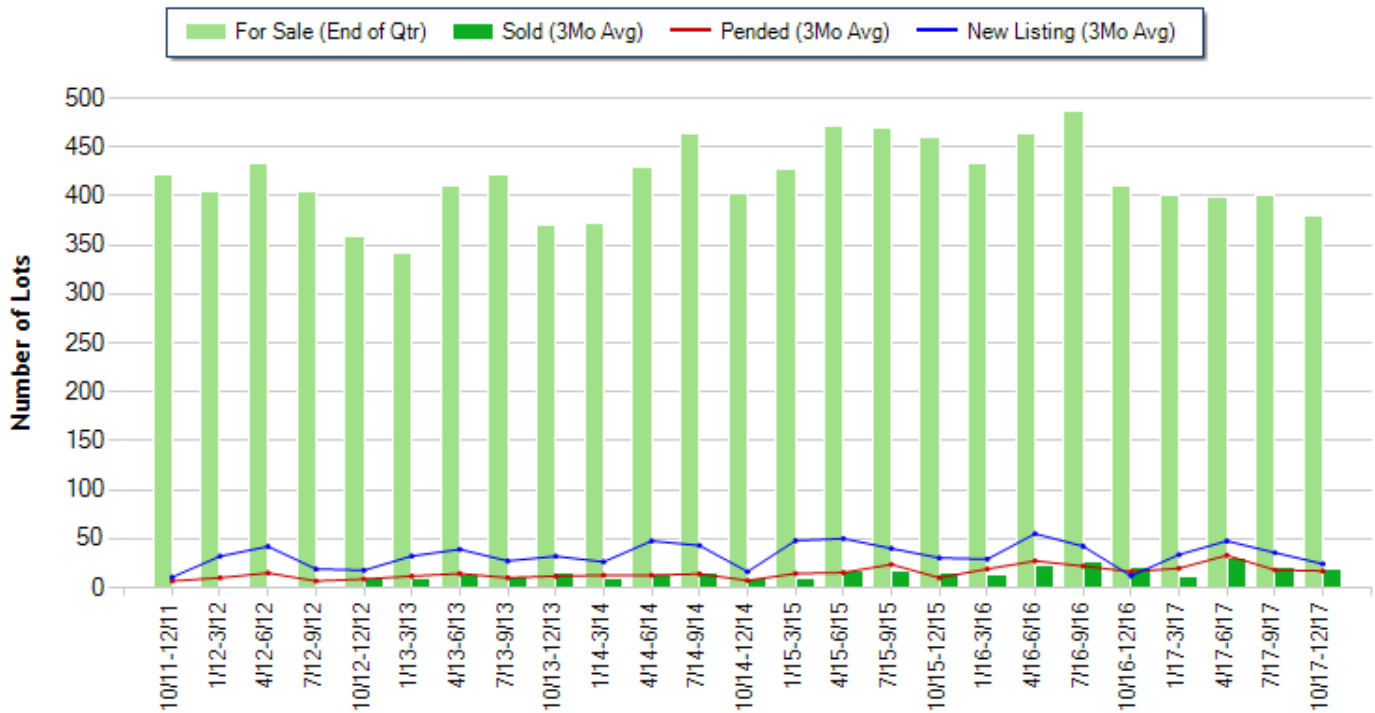
**SQFT Range:** 0 - No Limit

**Bedrooms:** 0 - No Limit

**Baths:** 0 - No Limit

**Year Built:** 0 - No Limit

**Number of Homes For Sale vs. Sold vs. Pended vs. New Listing - Last 6 years (Quarterly)**



Copyright © Trendgraphix, Inc.

	Curnt vs. Prev Qtr			Curnt vs. Same Qtr 1 Yr Ago			Curnt vs. Same Qtr 6 Yrs Ago			Curnt vs. Same 12 Months 1 Yr Ago			Curnt vs. Same 12 Months 5 Yrs Ago		
	Oct. 17 to Dec. 17	Jul. 17 to Sep. 17	% Change	Oct. 17 to Dec. 17	Oct. 16 to Dec. 16	% Change	Oct. 17 to Dec. 17	Oct. 11 to Dec. 11	% Change	Jan. 17 to Dec. 17	Jan. 16 to Dec. 16	% Change	Jan. 17 to Dec. 17	Jan. 12 to Dec. 12	% Change
For Sale (End of Qtr)	379	401	-5.5% ▼	379	411	-7.8% ▼	379	422	-10.2% ▼	379	411	-7.8% ▼	379	359	5.6% ▲
New Listing	73	107	-31.8% ▼	73	36	102.8% ▲	73	32	128.1% ▲	424	415	2.2% ▲	424	332	27.7% ▲
Sold	57	65	-12.3% ▼	57	60	-5% ▼	57	0	N/A	250	246	1.6% ▲	250	26	861.5% ▲
Pended	51	54	-5.6% ▼	51	49	4.1% ▲	51	20	155% ▲	263	254	3.5% ▲	263	121	117.4% ▲

Date	10/11 - 12/11	1/12- 3/12	4/12- 6/12	7/12- 9/12	10/12 - 12/12	1/13- 3/13	4/13- 6/13	7/13- 9/13	10/13 - 12/13	1/14- 3/14	4/14- 6/14	7/14- 9/14	10/14 - 12/14	1/15- 3/15	4/15- 6/15	7/15- 9/15	10/15 - 12/15	1/16- 3/16	4/16- 6/16	7/16- 9/16	10/16 - 12/16	1/17- 3/17	4/17- 6/17	7/17- 9/17	10/17 - 12/17
For Sale (End of Qtr)	422	405	434	405	359	341	410	422	370	373	429	464	402	427	472	469	460	434	463	487	411	400	399	401	379
New Listing	32	96	126	57	53	97	82	96	79	143	129	43	16.3	48	50	40	30.3	29	55	42.3	12	33.7	47.7	35.7	73
New Listing (3Mo Avg)	10.7	32	42	19	17.7	32.3	39	27.3	32	26.3	47.7	43	16.3	48	50	40	30.3	29	55	42.3	12	33.7	47.7	35.7	24.3
Sold	0	0	0	0	26	27	41	32	43	26	38	48	26	31	52	50	48	40	66	80	60	36	92	65	57
Sold (3Mo Avg)	0	0	0	0	8.7	9	13.7	10.7	14.3	8.7	12.7	16	8.7	10.3	17.3	16.7	16	13.3	22	26.7	20	12	30.7	21.7	19
Pended	20	30	45	20	26	35	43	30	35	38	38	42	22	43	46	71	30	57	82	66	49	59	99	54	51
Pended (3Mo Avg)	6.7	10	15	6.7	8.7	11.7	14.3	10	11.7	12.7	12.7	14	7.3	14.3	15.3	23.7	10	19	27.3	22	16.3	19.7	33	18	17
Months of Inventory (Closed Sales)	422	405	434	405	41.3	37.9	39.4	25.9	42.9	33.8	29	46.2	41.5	27.3	28.1	28.8	32.6	21	18.2	20.6	33.3	13	18.5	19.9	
Months of Inventory (Pended Sales)	63	40.5	28.9	60.4	41.3	29.1	28.7	42.2	31.6	29.4	33.8	33.1	55.1	29.9	30.8	19.8	46	22.8	17	22.1	25.2	20.3	12.1	22.3	22.3
Absorption Rate (Closed Sales) %	0	0	0	0	2.4	2.6	3.3	2.5	3.9	2.3	3	3.4	2.2	2.4	3.7	3.6	3.5	3.1	4.8	5.5	4.9	3	7.7	5.4	5
Absorption Rate (Pended Sales) %	1.6	2.5	3.5	1.7	2.4	3.4	3.5	2.4	3.2	3.4	3	3	1.8	3.3	3.2	5.1	2.2	4.4	5.9	4.5	4	4.9	8.3	4.5	4.5
Avg. Active Price	0	0	0	0	174	195	179	167	188	193	176	167	191	167	161	174	161	167	178	210	200	210	215	231	227
Avg. Sold Price	0	0	0	0	153	59	62	60	78	62	68	87	79	122	77	84	65	75	68	71	105	70	85	127	106
Avg. Sq. Ft. Price (Sold)	0	0	0	0	0	0	0	0	0	0	0	0	0	0	0	0	0	0	0	0	0	0	0	0	0
Sold/List Diff. %	0	0	0	0	76	88	90	91	90	91	88	95	82	93	93	92	93	94	91	92	88	91	94	93	93
Sold/Orig LP Diff. %	0	0	0	0	60	78	86	81	79	75	81	88	84	82	94	89	86	91	89	81	85	89	93	94	88
Days on Market	0	0	0	0	218	131	197	295	195	211	197	153	296	250	186	228	247	241	227	228	225	380	259	258	189
Median	0	0	0	0	64	20	54	47	64	35	59	71	74	69	58	71	46	43	43	36	65	35	71	74	115

All reports are published January 2018, based on data available at the end of December 2017. All reports presented are based on data supplied by the Central Oregon MLS. Neither the Association nor its MLS guarantees or is in anyway responsible for its accuracy. Data maintained by the Association or its MLS may not reflect all real estate activities in the market. Information deemed reliable but not guaranteed.

Location: Crook County

Property Types: Mobile Home - All Property Statuses - All Lot Sizes

Price Range: \$0 - No Limit

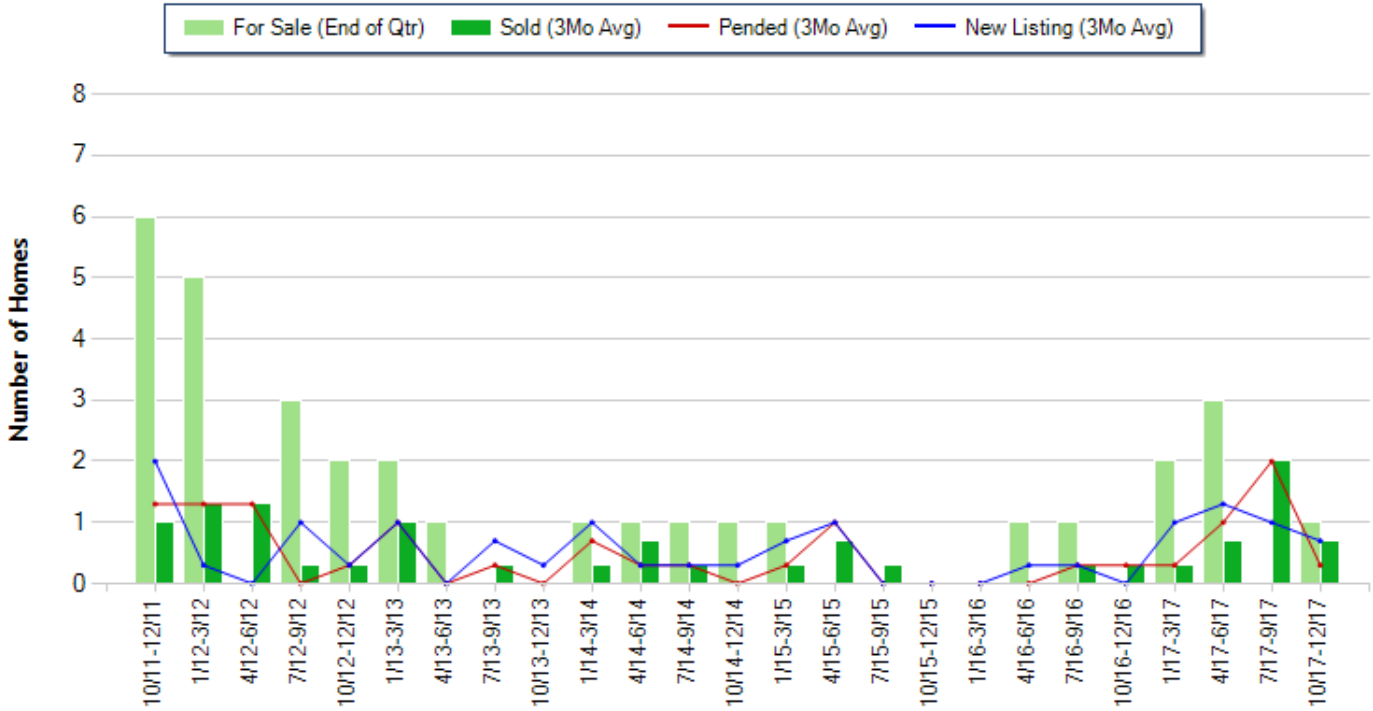
SQFT Range: 0 - No Limit

Bedrooms: 0 - No Limit

Baths: 0 - No Limit

Year Built: 0 - No Limit

**Number of Homes For Sale vs. Sold vs. Pended vs. New Listing - Last 6 years (Quarterly)**



Copyright © Trendgraphix, Inc.

	Curnt vs. Prev Qtr			Curnt vs. Same Qtr 1 Yr Ago			Curnt vs. Same Qtr 6 Yrs Ago			Curnt vs. Same 12 Months 1 Yr Ago			Curnt vs. Same 12 Months 5 Yrs Ago		
	Oct. 17 to Dec. 17	Jul. 17 to Sep. 17	% Change	Oct. 17 to Dec. 17	Oct. 16 to Dec. 16	% Change	Oct. 17 to Dec. 17	Oct. 11 to Dec. 11	% Change	Jan. 17 to Dec. 17	Jan. 16 to Dec. 16	% Change	Jan. 17 to Dec. 17	Jan. 12 to Dec. 12	% Change
For Sale (End of Qtr)	1	0	N/A	1	0	N/A	1	6	-83.3% ▼	1	0	N/A	1	2	-50% ▼
New Listing	2	3	-33.3% ▼	2	0	N/A	2	6	-66.7% ▼	12	2	500% ▲	12	5	140% ▲
Sold	2	6	-66.7% ▼	2	1	100% ▲	2	3	-33.3% ▼	11	2	450% ▲	11	10	10% ▲
Pended	1	6	-83.3% ▼	1	1	0%	1	4	-75% ▼	11	2	450% ▲	11	9	22.2% ▲

Date	10/11 - 12/11	1/12- 3/12	4/12- 6/12	7/12- 9/12	10/12 - 12/12	1/13- 3/13	4/13- 6/13	7/13- 9/13	10/13 - 12/13	1/14- 3/14	4/14- 6/14	7/14- 9/14	10/14 - 12/14	1/15- 3/15	4/15- 6/15	7/15- 9/15	10/15 - 12/15	1/16- 3/16	4/16- 6/16	7/16- 9/16	10/16 - 12/16	1/17- 3/17	4/17- 6/17	7/17- 9/17	10/17 - 12/17	
For Sale (End of Qtr)	6	5	0	3	2	2	1	0	0	1	1	1	1	1	0	0	0	0	0	1	1	0	2	3	0	1
New Listing	6	1	0	3	1	3	0	2	1	3	1	1	1	2	3	0	0	0	0	1	1	0	3	4	3	2
New Listing (3Mo Avg)	2	0.3	0	1	0.3	1	0	0.7	0.3	1	0.3	0.3	0.3	0.7	1	0	0	0	0	0.3	0.3	0	1	1.3	1	0.7
Sold	3	4	4	1	1	3	0	1	0	1	2	1	0	1	2	1	0	0	0	0	1	1	1	2	6	2
Sold (3Mo Avg)	1	1.3	1.3	0.3	0.3	1	0	0.3	0	0.3	0.7	0.3	0	0.3	0.7	0.3	0	0	0	0	0.3	0.3	0.3	0.7	2	0.7
Pended	4	4	4	0	1	3	0	1	0	2	1	1	0	1	3	0	0	0	0	0	1	1	1	3	6	1
Pended (3Mo Avg)	1.3	1.3	1.3	0	0.3	1	0	0.3	0	0.7	0.3	0.3	0	0.3	1	0	0	0	0	0	0.3	0.3	0.3	1	2	0.3
Months of Inventory (Closed Sales)	6	3.8	0	10	6.7	2	1	0	0	3.3	1.4	3.3	1	3.3	0	0	0	0	0	1	3.3	0	6.7	4.3	0	1.4
Months of Inventory (Pended Sales)	4.6	3.8	0	3	6.7	2	1	0	0	1.4	3.3	3.3	1	3.3	0	0	0	0	0	1	3.3	0	6.7	3	0	3.3
Absorption Rate (Closed Sales) %	16.7	26	4	10	15	50	0	1	0	30	70	30	0	30	2	1	0	0	0	0	30	1	15	23.3	6	70
Absorption Rate (Pended Sales) %	21.7	26	4	0	15	50	0	1	0	70	30	30	0	30	3	0	0	0	0	0	30	1	15	33.3	6	30
Avg. Active Price	26	23	0	18	23	33	0	0	0	45	14	38	0	15	0	0	0	0	0	0	19	0	65	48	0	25
Avg. Sold Price	10	18	17	13	11	16	0	13	0	23	26	12	0	12	16	32	0	0	0	0	29	16	14	54	41	63
Avg. Sq. Ft. Price (Sold)	8	14	14	15	13	13	0	15	0	15	18	13	0	13	15	21	0	0	0	0	25	15	17	42	37	49
Sold/List Diff. %	70	84	80	76	92	91	0	93	0	92	86	86	0	92	100	89	0	0	0	0	97	84	93	85	94	96
Sold/Orig LP Diff. %	64	85	58	81	92	88	0	93	0	92	86	86	0	92	107	89	0	0	0	0	100	84	93	80	87	94
Days on Market	88	129	248	208	69	69	0	52	0	14	67	91	0	117	31	47	0	0	0	0	23	59	33	76	41	87
Median	11	15	17	14	12	8	0	14	0	23	26	12	0	13	16	33	0	0	0	0	29	17	14	54	34	63

All reports are published January 2018, based on data available at the end of December 2017. All reports presented are based on data supplied by the Central Oregon MLS. Neither the Association nor its MLS guarantees or is in anyway responsible for its accuracy. Data maintained by the Association or its MLS may not reflect all real estate activities in the market. Information deemed reliable but not guaranteed.