

**Location:** Jefferson County

**Property Types:** Residential - All Property Statuses - 0.00 - 0.25, 0.25 - 0.50, 0.50 - 0.75, 0.75 - 1.0

**Price Range:** \$0 - No Limit

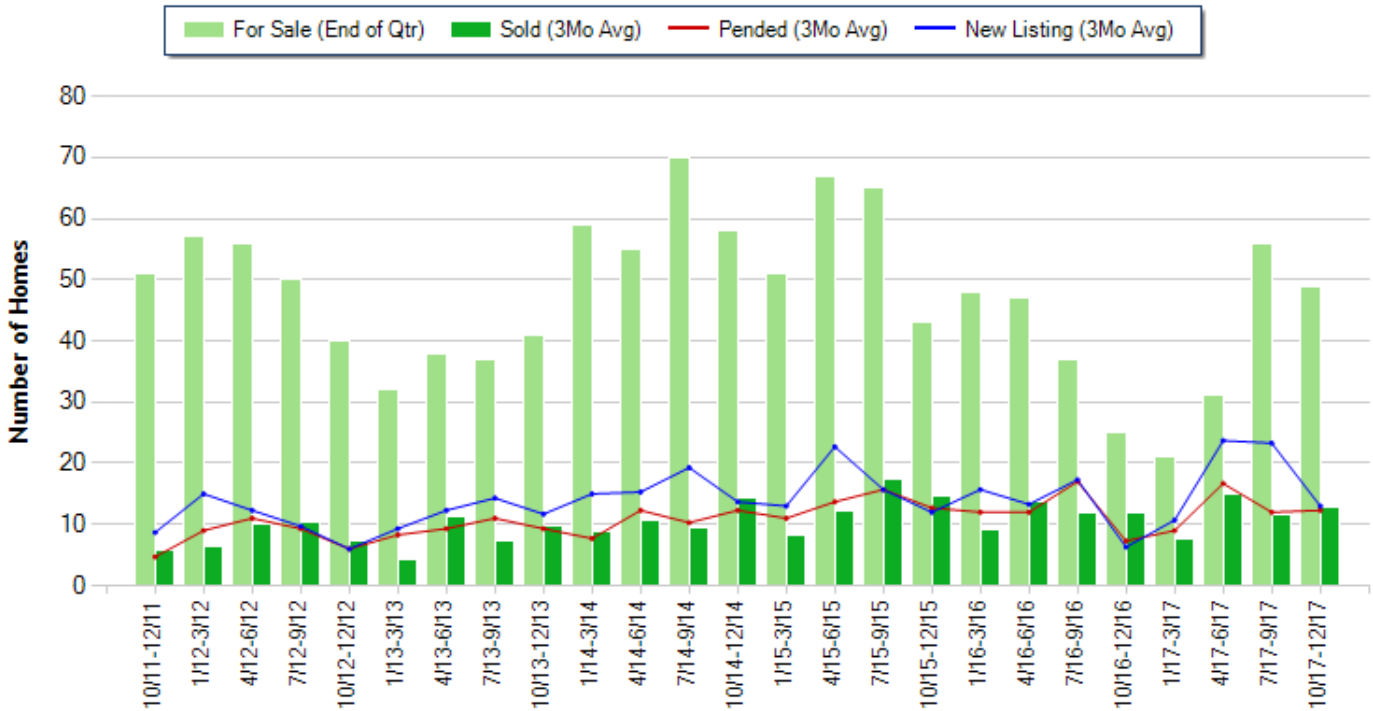
**SQFT Range:** 0 - No Limit

**Bedrooms:** 0 - No Limit

**Baths:** 0 - No Limit

**Year Built:** 0 - No Limit

**Number of Homes For Sale vs. Sold vs. Pended vs. New Listing - Last 6 years (Quarterly)**



Copyright © Trendgraphix, Inc.

	Curnt vs. Prev Qtr			Curnt vs. Same Qtr 1 Yr Ago			Curnt vs. Same Qtr 6 Yrs Ago			Curnt vs. Same 12 Months 1 Yr Ago			Curnt vs. Same 12 Months 5 Yrs Ago		
	Oct. 17 to Dec. 17	Jul. 17 to Sep. 17	% Change	Oct. 17 to Dec. 17	Oct. 16 to Dec. 16	% Change	Oct. 17 to Dec. 17	Oct. 11 to Dec. 11	% Change	Jan. 17 to Dec. 17	Jan. 16 to Dec. 16	% Change	Jan. 17 to Dec. 17	Jan. 12 to Dec. 12	% Change
For Sale (End of Qtr)	49	56	-12.5% ▼	49	25	96% ▲	49	51	-3.9% ▼	49	25	96% ▲	49	40	22.5% ▲
New Listing	39	70	-44.3% ▼	39	19	105.3% ▲	39	26	50% ▲	212	158	34.2% ▲	212	129	64.3% ▲
Sold	38	35	8.6% ▲	38	36	5.6% ▲	38	17	123.5% ▲	141	140	0.7% ▲	141	102	38.2% ▲
Pended	37	36	2.8% ▲	37	22	68.2% ▲	37	14	164.3% ▲	150	145	3.4% ▲	150	106	41.5% ▲

Date	10/11 - 12/11	1/12- 3/12	4/12- 6/12	7/12- 9/12	10/12 - 12/12	1/13- 3/13	4/13- 6/13	7/13- 9/13	10/13 - 12/13	1/14- 3/14	4/14- 6/14	7/14- 9/14	10/14 - 12/14	1/15- 3/15	4/15- 6/15	7/15- 9/15	10/15 - 12/15	1/16- 3/16	4/16- 6/16	7/16- 9/16	10/16 - 12/16	1/17- 3/17	4/17- 6/17	7/17- 9/17	10/17 - 12/17	
For Sale (End of Qtr)	51	57	56	50	40	32	38	37	41	59	55	70	58	51	67	65	43	48	47	37	25	21	31	31	56	49
New Listing	26	45	37	29	18	28	37	43	35	45	46	58	41	39	68	47	36	47	40	52	19	32	71	70	39	39
New Listing (3Mo Avg)	8.7	15	12.3	9.7	6	9.3	12.3	14.3	11.7	15	15.3	19.3	13.7	13	22.7	15.7	12	15.7	13.3	17.3	6.3	10.7	23.7	23.3	13	
Sold	17	19	30	31	22	13	34	22	29	26	32	28	43	25	37	52	44	27	41	36	36	23	45	35	38	
Sold (3Mo Avg)	5.7	6.3	10	10.3	7.3	4.3	11.3	7.3	9.7	8.7	10.7	9.3	14.3	8.3	12.3	17.3	14.7	9	13.7	12	12	7.7	15	11.7	12.7	
Pended	14	27	33	28	18	25	28	33	28	37	31	37	33	41	47	38	36	36	51	22	27	50	36	37	37	
Pended (3Mo Avg)	4.7	9	11	9.3	6	8.3	9.3	11	9.3	7.7	12.3	10.3	12.3	11	13.7	15.7	12.7	12	12	17	7.3	9	16.7	12	12.3	
Months of Inventory (Closed Sales)	8.9	9	5.6	4.9	5.5	7.4	3.4	5.1	4.2	6.8	5.1	7.5	4.1	6.1	5.4	3.8	2.9	5.3	3.4	3.1	2.1	2.7	2.1	4.8	3.9	
Months of Inventory (Pended Sales)	10.9	6.3	5.1	5.4	6.7	3.9	4.1	3.4	4.4	7.7	4.5	6.8	4.7	4.6	4.9	4.1	3.4	4	3.9	2.2	3.4	2.3	1.9	4.7	4	
Absorption Rate (Closed Sales) %	11.2	11.1	17.9	20.6	18.3	13.4	29.7	19.7	23.7	14.7	19.5	13.3	24.7	16.3	18.4	26.6	34.2	18.8	29.1	32.4	48	36.7	48.4	20.9	25.9	
Absorption Rate (Pended Sales) %	9.2	15.8	19.6	18.6	15	25.9	24.5	29.7	22.7	13.1	22.4	14.7	21.2	21.6	20.4	24.2	29.5	25	25.5	45.9	29.2	42.9	53.9	21.4	25.1	
Avg. Active Price	139	147	171	161	152	187	186	247	195	183	246	210	161	189	221	237	231	227	271	272	233	242	268	234	230	
Avg. Sold Price	84	71	77	123	101	78	110	100	100	102	120	159	130	160	110	136	140	135	182	164	162	178	172	224	190	
Avg. Sq. Ft. Price (Sold)	57	44	55	80	68	57	70	65	68	72	74	95	87	110	74	97	100	91	114	105	109	117	124	139	128	
Sold/List Diff. %	94	97	97	96	97	95	98	97	98	96	94	98	97	97	97	97	97	97	97	98	98	96	98	97	98	
Sold/Orig LP Diff. %	86	93	88	90	91	97	92	94	95	92	96	94	94	94	94	95	96	95	95	96	95	94	98	96	94	
Days on Market	85	118	163	140	171	172	196	169	115	123	169	130	173	111	154	116	123	124	133	113	119	172	80	90	99	
Median	78	67	69	85	86	81	86	78	99	95	111	117	115	90	114	130	137	121	147	158	148	177	164	199	175	

All reports are published January 2018, based on data available at the end of December 2017. All reports presented are based on data supplied by the Central Oregon MLS. Neither the Association nor its MLS guarantees or is in anyway responsible for its accuracy. Data maintained by the Association or its MLS may not reflect all real estate activities in the market. Information deemed reliable but not guaranteed.

**Location:** Jefferson County

**Property Types:** Residential - All Property Statuses - 1.0 - 1.5, 1.5 - 2.0, 2.0 - 2.5, 2.5 - 3.0, 3.0 - 3.5, 3.5 - 4.0, 4.0 - 4.5, 4.5 - 5.0, 5.0 - 5.5, 5.5 - 6.0, 6.0 - 6.5, 6.5 - 7.0, 7.0 - 7.5, 7.5 - 8.0, 8.0 - 8.5, 8.5 - 9.0, 9.0 - 9.5, 9.5 - 10, 10 - 20, 20 - 30, 30 - 40, 40 - 50, 50 - 60, 60 - 70, 70 - 80, 80 - 90, 90 - 100, 100+

**Price Range:** \$0 - No Limit

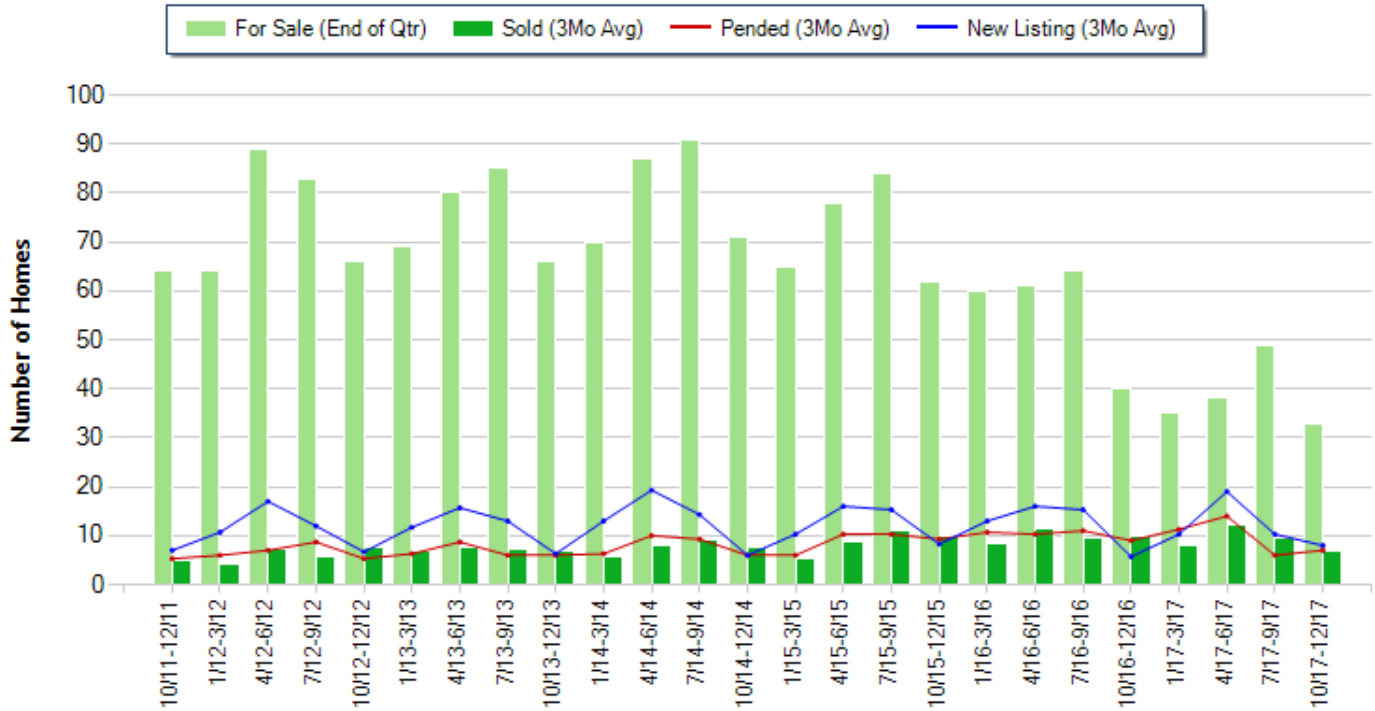
**SQFT Range:** 0 - No Limit

**Bedrooms:** 0 - No Limit

**Baths:** 0 - No Limit

**Year Built:** 0 - No Limit

**Number of Homes For Sale vs. Sold vs. Pended vs. New Listing - Last 6 years (Quarterly)**



Copyright © Trendgraphix, Inc.

	Curnt vs. Prev Qtr			Curnt vs. Same Qtr 1 Yr Ago			Curnt vs. Same Qtr 6 Yrs Ago			Curnt vs. Same 12 Months 1 Yr Ago			Curnt vs. Same 12 Months 5 Yrs Ago		
	Oct. 17 to Dec. 17	Jul. 17 to Sep. 17	% Change	Oct. 17 to Dec. 17	Oct. 16 to Dec. 16	% Change	Oct. 17 to Dec. 17	Oct. 11 to Dec. 11	% Change	Jan. 17 to Dec. 17	Jan. 16 to Dec. 16	% Change	Jan. 17 to Dec. 17	Jan. 12 to Dec. 12	% Change
For Sale (End of Qtr)	33	49	-32.7% ▼	33	40	-17.5% ▼	33	64	-48.4% ▼	33	40	-17.5% ▼	33	66	-50% ▼
New Listing	24	31	-22.6% ▼	24	17	41.2% ▲	24	21	14.3% ▲	143	150	-4.7% ▼	143	139	2.9% ▲
Sold	21	29	-27.6% ▼	21	30	-30% ▼	21	15	40% ▲	111	118	-5.9% ▼	111	75	48% ▲
Pended	21	18	16.7% ▲	21	27	-22.2% ▼	21	16	31.3% ▲	115	123	-6.5% ▼	115	81	42% ▲

Date	10/11 - 12/11	1/12-3/12	4/12-6/12	7/12-9/12	10/12 - 12/12	1/13-3/13	4/13-6/13	7/13-9/13	10/13 - 12/13	1/14-3/14	4/14-6/14	7/14-9/14	10/14 - 12/14	1/15-3/15	4/15-6/15	7/15-9/15	10/15 - 12/15	1/16-3/16	4/16-6/16	7/16-9/16	10/16 - 12/16	1/17-3/17	4/17-6/17	7/17-9/17	10/17 - 12/17
For Sale (End of Qtr)	64	64	89	83	66	69	80	85	66	70	87	91	71	65	78	84	62	60	61	64	40	35	38	49	33
New Listing	21	32	51	36	20	35	47	39	19	39	58	43	18	31	48	46	25	39	48	46	17	31	57	31	24
New Listing (3Mo Avg)	7	10.7	17	12	6.7	11.7	15.7	13	6.3	13	19.3	14.3	6	10.3	16	15.3	8.3	13	16	15.3	5.7	10.3	19	10.3	8
Sold	15	13	22	17	23	20	23	22	20	17	24	28	23	16	26	33	30	25	34	29	30	24	37	29	21
Sold (3Mo Avg)	5	4.3	7.3	5.7	7.7	6.7	7.7	7.3	6.7	5.7	8	9.3	7.7	5.3	8.7	11	10	8.3	11.3	9.7	10	8	12.3	9.7	7
Pended	16	18	21	26	16	19	26	18	18	19	30	28	18	18	31	31	28	32	31	33	27	34	42	18	21
Pended (3Mo Avg)	5.3	6	7	8.7	5.3	6.3	8.7	6	6	6.3	10	9.3	6	6	10.3	10.3	9.3	10.7	10.3	11	9	11.3	14	6	7
Months of Inventory (Closed Sales)	12.8	14.9	12.2	14.6	8.6	10.3	10.4	11.6	9.9	12.3	10.9	9.8	9.2	12.3	9	7.6	6.2	7.2	5.4	6.6	4	4.4	3.1	5.1	4.7
Months of Inventory (Pended Sales)	12.1	10.7	12.7	9.5	12.5	11	9.2	14.2	11	11.1	8.7	9.8	11.8	10.8	7.6	8.2	6.7	5.6	5.9	5.8	4.4	3.1	2.7	8.2	4.7
Absorption Rate (Closed Sales) %	7.8	6.7	8.2	6.9	11.7	9.7	9.6	8.6	10.2	8.1	9.2	10.2	10.8	8.2	11.2	13.1	16.1	13.8	18.5	15.2	25	22.9	32.4	19.8	21.2
Absorption Rate (Pended Sales) %	8.3	9.4	7.9	10.5	8	9.1	10.9	7.1	9.1	9	11.5	10.2	8.5	9.2	13.2	12.3	15	17.8	16.9	17.2	22.5	32.3	36.8	12.2	21.2
Avg. Active Price	349	297	299	287	303	339	347	340	389	358	423	407	403	354	390	410	436	434	449	443	368	367	484	486	491
Avg. Sold Price	205	153	146	175	184	190	189	200	260	210	223	227	236	240	264	262	246	242	298	269	295	348	297	300	323
Avg. Sq. Ft. Price (Sold)	100	79	82	102	107	110	100	113	139	129	124	126	114	132	148	141	142	132	157	152	144	173	167	168	166
Sold/List Diff. %	93	95	95	92	96	95	95	99	96	95	97	97	96	97	96	96	95	95	97	94	98	95	97	97	98
Sold/Orig LP Diff. %	83	92	82	87	88	84	91	88	91	90	92	87	91	90	96	93	92	90	95	92	96	94	95	96	92
Days on Market	155	140	180	146	214	263	199	164	164	184	194	145	192	198	163	175	146	168	182	208	165	175	146	146	191
Median	171	138	128	160	165	180	210	183	189	200	205	231	233	255	217	245	265	235	265	255	278	260	300	289	320

All reports are published January 2018, based on data available at the end of December 2017. All reports presented are based on data supplied by the Central Oregon MLS. Neither the Association nor its MLS guarantees or is in anyway responsible for its accuracy. Data maintained by the Association or its MLS may not reflect all real estate activities in the market. Information deemed reliable but not guaranteed.

**Location:** Jefferson County

**Property Types:** Manufactured Home - All Property Statuses - 0.00 - 0.25, 0.25 - 0.50, 0.50 - 0.75, 0.75 - 1.0

**Price Range:** \$0 - No Limit

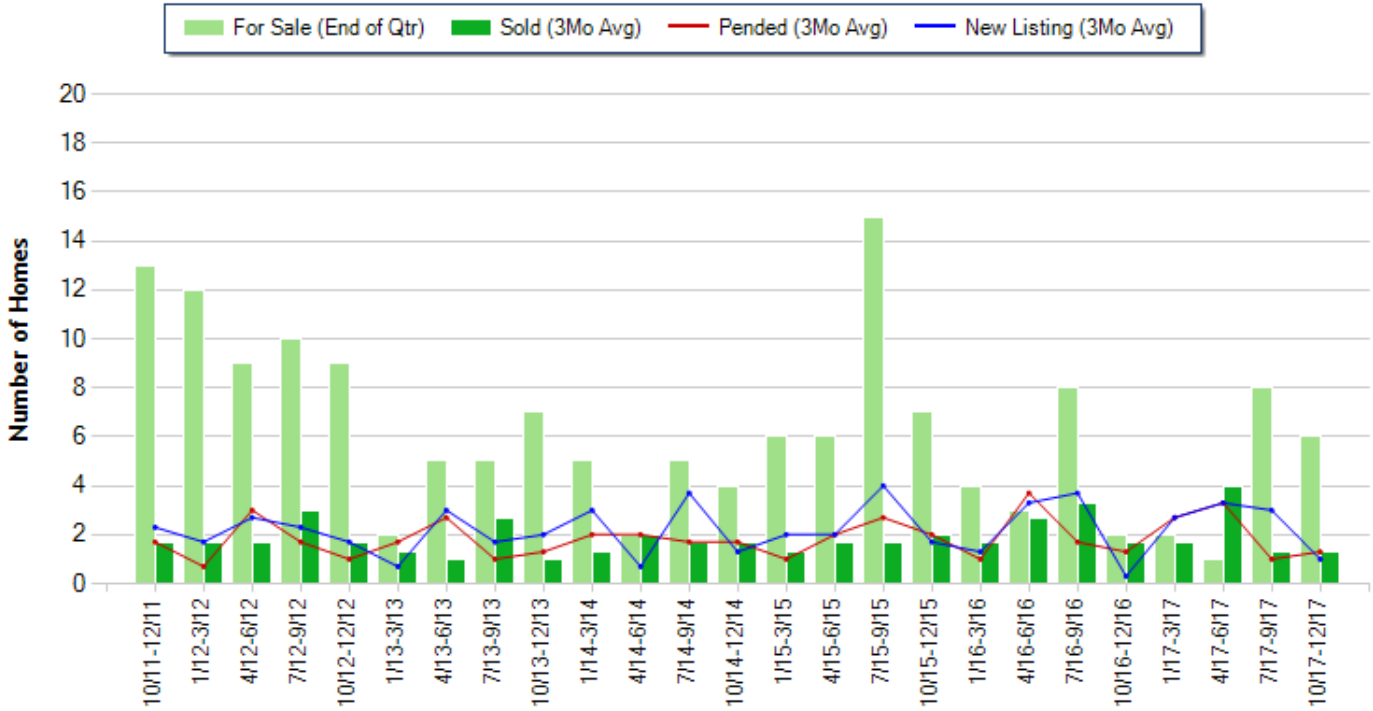
**SQFT Range:** 0 - No Limit

**Bedrooms:** 0 - No Limit

**Baths:** 0 - No Limit

**Year Built:** 0 - No Limit

**Number of Homes For Sale vs. Sold vs. Pended vs. New Listing - Last 6 years (Quarterly)**



Copyright © Trendgraphix, Inc.

	Curnt vs. Prev Qtr			Curnt vs. Same Qtr 1 Yr Ago			Curnt vs. Same Qtr 6 Yrs Ago			Curnt vs. Same 12 Months 1 Yr Ago			Curnt vs. Same 12 Months 5 Yrs Ago		
	Oct. 17 to Dec. 17	Jul. 17 to Sep. 17	% Change	Oct. 17 to Dec. 17	Oct. 16 to Dec. 16	% Change	Oct. 17 to Dec. 17	Oct. 11 to Dec. 11	% Change	Jan. 17 to Dec. 17	Jan. 16 to Dec. 16	% Change	Jan. 17 to Dec. 17	Jan. 12 to Dec. 12	% Change
For Sale (End of Qtr)	6	8	-25% ▼	6	2	200% ▲	6	13	-53.8% ▼	6	2	200% ▲	6	9	-33.3% ▼
New Listing	3	9	-66.7% ▼	3	1	200% ▲	3	7	-57.1% ▼	30	26	15.4% ▲	30	25	20% ▲
Sold	4	4	0%	4	5	-20% ▼	4	5	-20% ▼	25	28	-10.7% ▼	25	24	4.2% ▲
Pended	4	3	33.3% ▲	4	4	0%	4	5	-20% ▼	25	23	8.7% ▲	25	19	31.6% ▲

Date	10/11 - 12/11	1/12- 3/12	4/12- 6/12	7/12- 9/12	10/12 - 12/12	1/13- 3/13	4/13- 6/13	7/13- 9/13	10/13 - 12/13	1/14- 3/14	4/14- 6/14	7/14- 9/14	10/14 - 12/14	1/15- 3/15	4/15- 6/15	7/15- 9/15	10/15 - 12/15	1/16- 3/16	4/16- 6/16	7/16- 9/16	10/16 - 12/16	1/17- 3/17	4/17- 6/17	7/17- 9/17	10/17 - 12/17
For Sale (End of Qtr)	13	12	9	10	9	2	5	5	7	5	2	5	4	6	6	15	7	4	3	8	2	2	1	8	6
New Listing	7	5	8	7	5	2	9	5	6	9	2	11	4	6	6	12	5	4	10	11	1	8	10	9	3
New Listing (3Mo Avg)	2.3	1.7	2.7	2.3	1.7	0.7	3	1.7	2	3	0.7	3.7	1.3	2	2	4	1.7	1.3	3.3	3.7	0.3	2.7	3.3	3	1
Sold	5	5	5	9	5	4	3	8	3	4	6	5	5	4	5	5	6	5	8	10	5	5	12	4	4
Sold (3Mo Avg)	1.7	1.7	1.7	3	1.7	1.3	1	2.7	1	1.3	2	1.7	1.7	1.3	1.7	1.7	2	1.7	2.7	3.3	1.7	1.7	4	1.3	1.3
Pended	5	2	9	5	3	5	8	3	4	6	6	5	5	3	6	8	6	3	11	5	4	8	10	3	4
Pended (3Mo Avg)	1.7	0.7	3	1.7	1	1.7	2.7	1	1.3	2	2	1.7	1.7	1	2	2.7	2	1	3.7	1.7	1.3	2.7	3.3	1	1.3
Months of Inventory (Closed Sales)	7.6	7.1	5.3	3.3	5.3	1.5	5	1.9	7	3.8	1	2.9	2.4	4.6	3.5	8.8	3.5	2.4	1.1	2.4	1.2	1.2	0.3	6.2	4.6
Months of Inventory (Pended Sales)	7.6	17.1	3	5.9	9	1.2	1.9	5	5.4	2.5	1	2.9	2.4	6	3	5.6	3.5	4	0.8	4.7	1.5	0.7	0.3	8	4.6
Absorption Rate (Closed Sales) %	13.1	14.2	18.9	30	18.9	65	20	54	14.3	26	100	34	42.5	21.7	28.3	11.3	28.6	42.5	90	41.3	85	85	400	16.3	21.7
Absorption Rate (Pended Sales) %	13.1	5.8	33.3	17	11.1	85	54	20	18.6	40	100	34	42.5	16.7	33.3	18	28.6	25	123.3	21.3	65	135	330	12.5	21.7
Avg. Active Price	82	70	75	73	94	100	79	104	89	108	166	124	127	122	155	151	141	119	132	139	150	160	157	152	137
Avg. Sold Price	104	36	58	62	60	51	72	63	72	97	70	103	89	87	88	111	110	157	123	116	134	125	117	146	117
Avg. Sq. Ft. Price (Sold)	65	33	43	41	42	35	54	48	64	67	57	70	68	65	71	79	75	100	98	85	85	89	82	95	92
Sold/List Diff. %	90	96	94	91	94	87	91	91	98	96	97	98	97	99	96	98	98	98	98	97	96	98	96	97	99
Sold/Orig LP Diff. %	85	88	88	75	80	77	89	92	99	96	98	98	90	92	98	96	97	98	93	92	94	93	97	98	94
Days on Market	110	132	94	323	203	197	64	109	56	120	70	41	99	108	99	84	58	108	68	123	108	113	71	74	99
Median	90	40	46	59	52	50	65	47	65	79	70	120	62	90	80	94	97	130	127	125	128	97	118	150	116

All reports are published January 2018, based on data available at the end of December 2017. All reports presented are based on data supplied by the Central Oregon MLS. Neither the Association nor its MLS guarantees or is in anyway responsible for its accuracy. Data maintained by the Association or its MLS may not reflect all real estate activities in the market. Information deemed reliable but not guaranteed.

**Location:** Jefferson County

**Property Types:** Manufactured Home - All Property Statuses - 1.0 - 1.5, 1.5 - 2.0, 2.0 - 2.5, 2.5 - 3.0, 3.0 - 3.5, 3.5 - 4.0, 4.0 - 4.5, 4.5 - 5.0, 5.0 - 5.5, 5.5 - 6.0, 6.0 - 6.5, 6.5 - 7.0, 7.0 - 7.5, 7.5 - 8.0, 8.0 - 8.5, 8.5 - 9.0, 9.0 - 9.5, 9.5 - 10, 10 - 20, 20 - 30, 30 - 40, 40 - 50, 50 - 60, 60 - 70, 70 - 80, 80 - 90, 90 - 100, 100+

**Price Range:** \$0 - No Limit

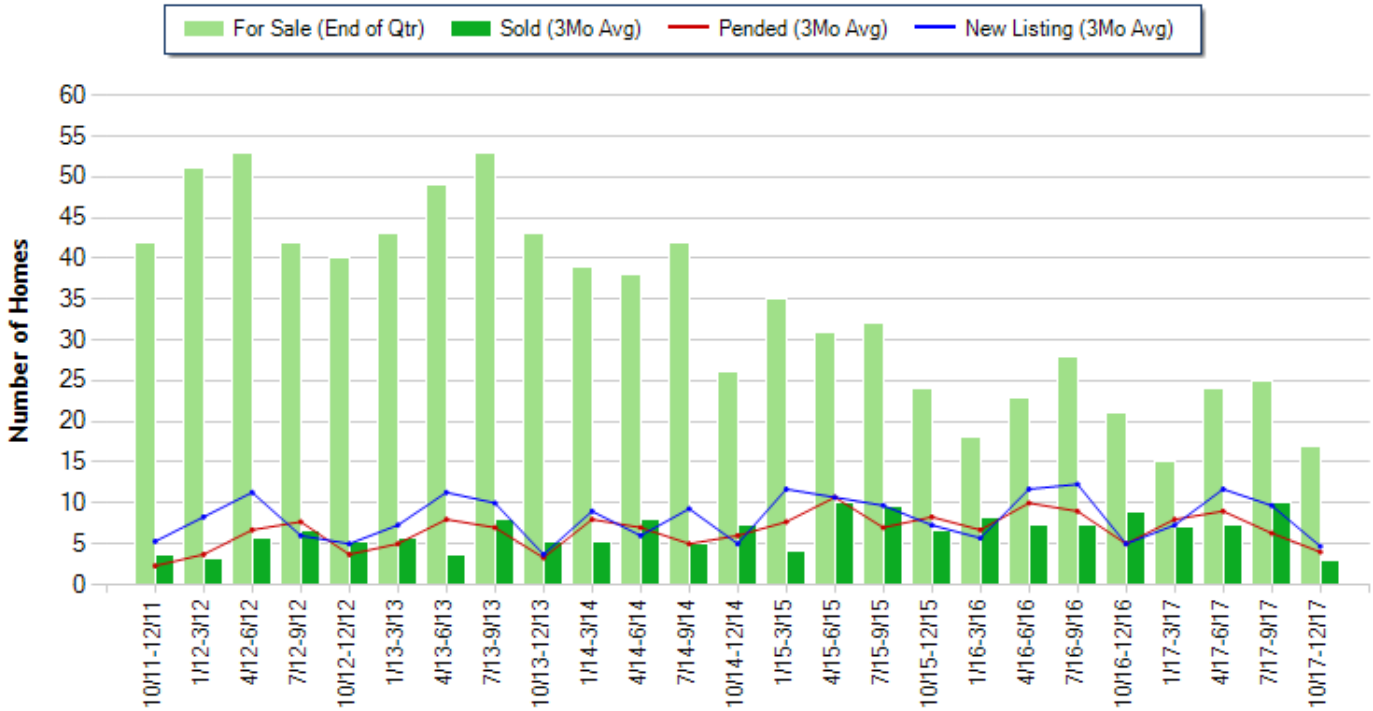
**SQFT Range:** 0 - No Limit

**Bedrooms:** 0 - No Limit

**Baths:** 0 - No Limit

**Year Built:** 0 - No Limit

**Number of Homes For Sale vs. Sold vs. Pended vs. New Listing - Last 6 years (Quarterly)**



Copyright © Trendgraphix, Inc.

	Curnt vs. Prev Qtr			Curnt vs. Same Qtr 1 Yr Ago			Curnt vs. Same Qtr 6 Yrs Ago			Curnt vs. Same 12 Months 1 Yr Ago			Curnt vs. Same 12 Months 5 Yrs Ago		
	Oct. 17 to Dec. 17	Jul. 17 to Sep. 17	% Change	Oct. 17 to Dec. 17	Oct. 16 to Dec. 16	% Change	Oct. 17 to Dec. 17	Oct. 11 to Dec. 11	% Change	Jan. 17 to Dec. 17	Jan. 16 to Dec. 16	% Change	Jan. 17 to Dec. 17	Jan. 12 to Dec. 12	% Change
For Sale (End of Qtr)	17	25	-32% ▼	17	21	-19% ▼	17	42	-59.5% ▼	17	21	-19% ▼	17	40	-57.5% ▼
New Listing	14	29	-51.7% ▼	14	15	-6.7% ▼	14	16	-12.5% ▼	100	104	-3.8% ▼	100	92	8.7% ▲
Sold	9	30	-70% ▼	9	27	-66.7% ▼	9	11	-18.2% ▼	82	96	-14.6% ▼	82	63	30.2% ▲
Pended	12	19	-36.8% ▼	12	15	-20% ▼	12	7	71.4% ▲	82	92	-10.9% ▼	82	65	26.2% ▲

Date	10/11 - 12/11	1/12-3/12	4/12-6/12	7/12-9/12	10/12 - 12/12	1/13-3/13	4/13-6/13	7/13-9/13	10/13 - 12/13	1/14-3/14	4/14-6/14	7/14-9/14	10/14 - 12/14	1/15-3/15	4/15-6/15	7/15-9/15	10/15 - 12/15	1/16-3/16	4/16-6/16	7/16-9/16	10/16 - 12/16	1/17-3/17	4/17-6/17	7/17-9/17	10/17 - 12/17
For Sale (End of Qtr)	42	51	53	42	40	43	49	53	43	39	38	42	26	35	31	32	24	18	23	28	21	15	24	25	17
New Listing	16	25	34	18	15	22	34	30	11	27	18	28	15	35	32	29	22	17	35	37	15	22	35	29	14
New Listing (3Mo Avg)	5.3	8.3	11.3	6	5	7.3	11.3	10	3.7	9	6	9.3	5	11.7	10.7	9.7	7.3	5.7	11.7	12.3	5	7.3	11.7	9.7	4.7
Sold	11	10	17	20	16	17	11	24	16	16	24	15	22	12	30	29	20	25	22	22	27	21	22	30	9
Sold (3Mo Avg)	3.7	3.3	5.7	6.7	5.3	5.7	3.7	8	5.3	5.3	8	5	7.3	4	10	9.7	6.7	8.3	7.3	7.3	9	7	7.3	10	3
Pended	7	11	20	23	11	15	24	21	10	24	21	15	18	23	32	21	25	20	30	27	15	24	27	19	12
Pended (3Mo Avg)	2.3	3.7	6.7	7.7	3.7	5	8	7	3.3	8	7	5	6	7.7	10.7	7	8.3	6.7	10	9	5	8	9	6.3	4
Months of Inventory (Closed Sales)	11.4	15.5	9.3	6.3	7.5	7.5	13.2	6.6	8.1	7.4	4.8	8.4	3.6	8.8	3.1	3.3	3.6	2.2	3.2	3.8	2.3	2.1	3.3	2.5	5.7
Months of Inventory (Pended Sales)	18.3	13.8	7.9	5.5	10.8	8.6	6.1	7.6	13	4.9	5.4	8.4	4.3	4.5	2.9	4.6	2.9	2.7	2.3	3.1	4.2	1.9	2.7	4	4.3
Absorption Rate (Closed Sales) %	8.8	6.5	10.8	16	13.3	13.3	7.6	15.1	12.3	13.6	21.1	11.9	28.1	11.4	32.3	30.3	27.9	46.1	31.7	26.1	42.9	46.7	30.4	40	17.6
Absorption Rate (Pended Sales) %	5.5	7.3	12.6	18.3	9.3	11.6	16.3	13.2	7.7	20.5	18.4	11.9	23.1	22	34.5	21.9	34.6	37.2	43.5	32.1	23.8	53.3	37.5	25.2	23.5
Avg. Active Price	170	150	167	170	167	177	185	185	194	189	206	194	215	226	214	238	207	215	262	255	211	261	288	313	298
Avg. Sold Price	101	107	82	115	118	102	109	133	120	152	158	145	128	163	162	181	195	168	168	180	205	191	228	230	248
Avg. Sq. Ft. Price (Sold)	70	64	56	76	84	68	76	92	87	106	98	104	88	123	101	115	108	108	114	112	121	126	143	149	147
Sold/List Diff. %	93	98	95	96	94	98	95	96	95	96	95	98	92	99	96	96	98	99	97	98	97	98	98	98	98
Sold/Orig LP Diff. %	84	87	89	80	88	85	92	93	92	91	92	93	85	96	94	94	90	94	94	96	94	94	98	97	96
Days on Market	179	109	118	213	166	192	188	137	149	215	192	168	146	120	112	131	126	157	138	116	134	174	87	120	105
Median	93	94	84	104	120	99	130	137	118	150	143	131	129	184	153	198	195	164	163	175	209	183	200	235	267

All reports are published January 2018, based on data available at the end of December 2017. All reports presented are based on data supplied by the Central Oregon MLS. Neither the Association nor its MLS guarantees or is in anyway responsible for its accuracy. Data maintained by the Association or its MLS may not reflect all real estate activities in the market. Information deemed reliable but not guaranteed.

**Location:** Jefferson County

**Property Types:** Shared Int/Timeshare - All Property Statuses - All Lot Sizes

**Price Range:** \$0 - No Limit

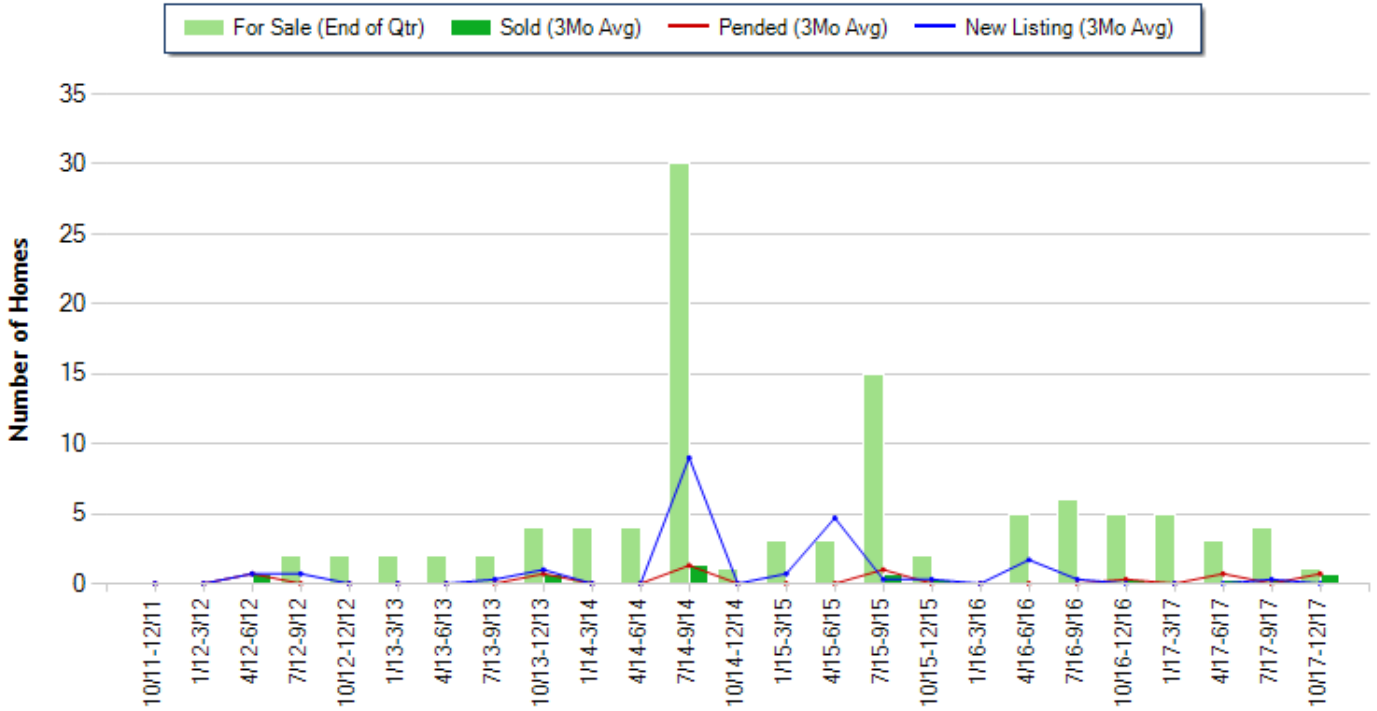
**SQFT Range:** 0 - No Limit

**Bedrooms:** 0 - No Limit

**Baths:** 0 - No Limit

**Year Built:** 0 - No Limit

**Number of Homes For Sale vs. Sold vs. Pended vs. New Listing - Last 6 years (Quarterly)**



Copyright © Trendgraphix, Inc.

	Curnt vs. Prev Qtr			Curnt vs. Same Qtr 1 Yr Ago			Curnt vs. Same Qtr 6 Yrs Ago			Curnt vs. Same 12 Months 1 Yr Ago			Curnt vs. Same 12 Months 5 Yrs Ago		
	Oct. 17 to Dec. 17	Jul. 17 to Sep. 17	% Change	Oct. 17 to Dec. 17	Oct. 16 to Dec. 16	% Change	Oct. 17 to Dec. 17	Oct. 11 to Dec. 11	% Change	Jan. 17 to Dec. 17	Jan. 16 to Dec. 16	% Change	Jan. 17 to Dec. 17	Jan. 12 to Dec. 12	% Change
For Sale (End of Qtr)	1	4	-75% ▼	1	5	-80% ▼	1	0	N/A	1	5	-80% ▼	1	2	-50% ▼
New Listing	0	1	-100% ▼	0	0	N/A	0	0	N/A	1	6	-83.3% ▼	1	4	-75% ▼
Sold	2	1	100% ▲	2	1	100% ▲	2	0	N/A	4	1	300% ▲	4	2	100% ▲
Pended	2	0	N/A	2	1	100% ▲	2	0	N/A	4	1	300% ▲	4	2	100% ▲

Date	10/11 - 12/11	1/12- 3/12	4/12- 6/12	7/12- 9/12	10/12 - 12/12	1/13- 3/13	4/13- 6/13	7/13- 9/13	10/13 - 12/13	1/14- 3/14	4/14- 6/14	7/14- 9/14	10/14 - 12/14	1/15- 3/15	4/15- 6/15	7/15- 9/15	10/15 - 12/15	1/16- 3/16	4/16- 6/16	7/16- 9/16	10/16 - 12/16	1/17- 3/17	4/17- 6/17	7/17- 9/17	10/17 - 12/17
For Sale (End of Qtr)	0	0	0	2	2	2	2	2	4	4	4	30	1	3	3	15	2	0	5	6	5	5	3	4	1
New Listing	0	0	2	2	0	0	0	1	3	0	0	27	0	2	14	1	1	0	5	1	0	0	0	1	0
New Listing (3Mo Avg)	0	0	0.7	0.7	0	0	0	0.3	1	0	0	9	0	0.7	4.7	0.3	0.3	0	1.7	0.3	0	0	0	0.3	0
Sold	0	0	2	0	0	0	0	0	2	0	0	4	0	0	0	2	1	0	0	0	1	0	1	1	2
Sold (3Mo Avg)	0	0	0.7	0	0	0	0	0	0.7	0	0	1.3	0	0	0	0.7	0.3	0	0	0	0.3	0	0.3	0.3	0.7
Pended	0	0	2	0	0	0	0	0	2	0	0	4	0	0	0	3	0	0	0	0	1	0	2	0	2
Pended (3Mo Avg)	0	0	0.7	0	0	0	0	0	0.7	0	0	1.3	0	0	0	0	1	0	0	0	0.3	0	0.7	0	0.7
Months of Inventory (Closed Sales)	0	0	0	2	2	2	2	2	5.7	4	4	23.1	1	3	3	21.4	6.7	0	5	6	16.7	5	10	13.3	1.4
Months of Inventory (Pended Sales)	0	0	0	2	2	2	2	2	5.7	4	4	23.1	1	3	3	15	2	0	5	6	16.7	5	4.3	4	1.4
Absorption Rate (Closed Sales) %	0	0	2	0	0	0	0	0	17.5	0	0	4.3	0	0	0	4.7	15	0	0	0	6	0	10	7.5	70
Absorption Rate (Pended Sales) %	0	0	2	0	0	0	0	0	17.5	0	0	4.3	0	0	0	6.7	0	0	0	0	6	0	23.3	0	70
Avg. Active Price	0	0	0	0	0	0	0	0	166	0	0	114	0	0	0	126	160	0	0	0	179	0	162	149	230
Avg. Sold Price	0	0	200	0	0	0	0	0	200	0	0	186	0	0	0	139	102	0	0	0	105	0	200	200	153
Avg. Sq. Ft. Price (Sold)	0	0	164	0	0	0	0	0	164	0	0	172	0	0	0	127	98	0	0	0	101	0	164	164	131
Sold/List Diff. %	0	0	100	0	0	0	0	0	100	0	0	96	0	0	0	90	48	0	0	0	96	0	98	98	90
Sold/Orig LP Diff. %	0	0	100	0	0	0	0	0	100	0	0	96	0	0	0	96	48	0	0	0	96	0	95	98	90
Days on Market	0	0	1	0	0	0	0	0	501	0	0	221	0	0	0	345	221	0	0	0	237	0	413	438	310
Median	0	0	200	0	0	0	0	0	200	0	0	171	0	0	0	139	102	0	0	0	105	0	200	200	153

All reports are published January 2018, based on data available at the end of December 2017. All reports presented are based on data supplied by the Central Oregon MLS. Neither the Association nor its MLS guarantees or is in anyway responsible for its accuracy. Data maintained by the Association or its MLS may not reflect all real estate activities in the market. Information deemed reliable but not guaranteed.

**Location:** Jefferson County

**Property Types:** Condo, Townhome - All Property Statuses - All Lot Sizes

**Price Range:** \$0 - No Limit

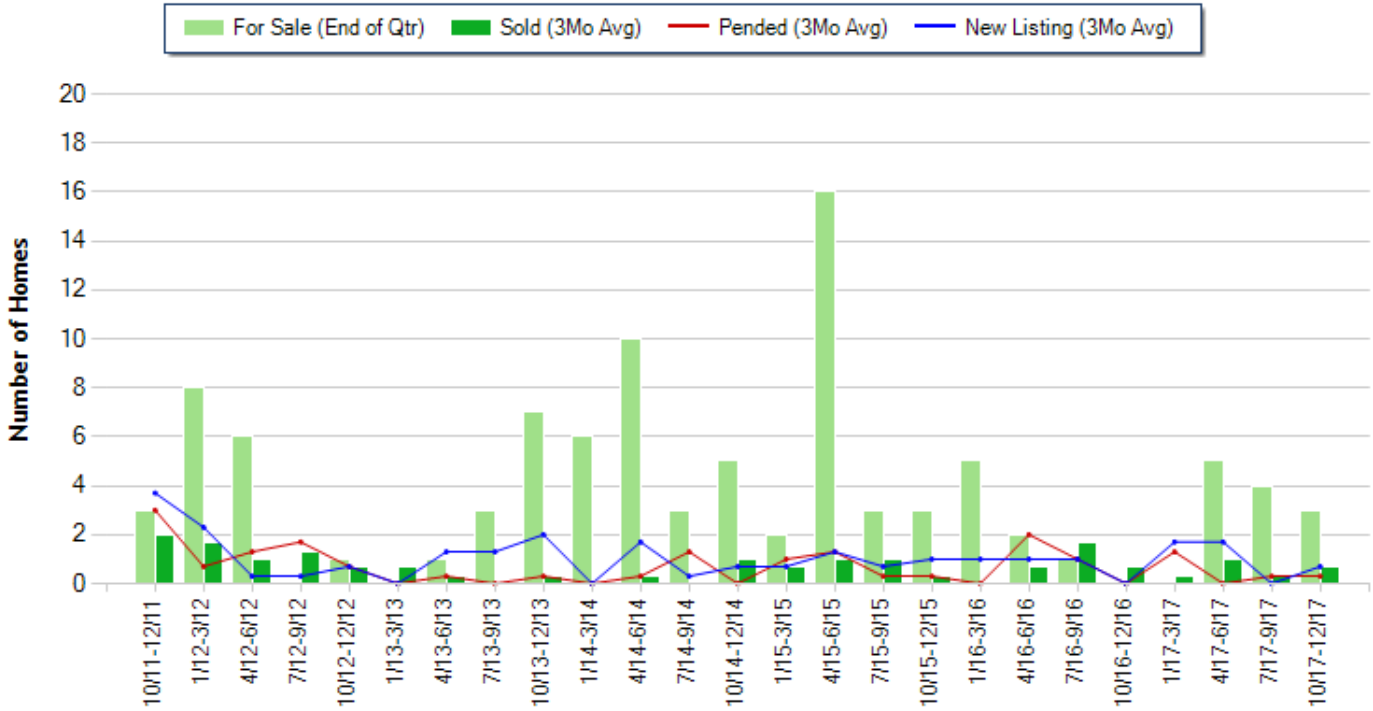
**SQFT Range:** 0 - No Limit

**Bedrooms:** 0 - No Limit

**Baths:** 0 - No Limit

**Year Built:** 0 - No Limit

**Number of Homes For Sale vs. Sold vs. Pended vs. New Listing - Last 6 years (Quarterly)**



Copyright © Trendgraphix, Inc.

	Curnt vs. Prev Qtr			Curnt vs. Same Qtr 1 Yr Ago			Curnt vs. Same Qtr 6 Yrs Ago			Curnt vs. Same 12 Months 1 Yr Ago			Curnt vs. Same 12 Months 5 Yrs Ago		
	Oct. 17 to Dec. 17	Jul. 17 to Sep. 17	% Change	Oct. 17 to Dec. 17	Oct. 16 to Dec. 16	% Change	Oct. 17 to Dec. 17	Oct. 11 to Dec. 11	% Change	Jan. 17 to Dec. 17	Jan. 16 to Dec. 16	% Change	Jan. 17 to Dec. 17	Jan. 12 to Dec. 12	% Change
For Sale (End of Qtr)	3	4	-25% ▼	3	0	N/A	3	3	0%	3	0	N/A	3	1	200% ▲
New Listing	2	0	N/A	2	0	N/A	2	11	-81.8% ▼	12	9	33.3% ▲	12	11	9.1% ▲
Sold	2	1	100% ▲	2	2	0%	2	6	-66.7% ▼	7	9	-22.2% ▼	7	14	-50% ▼
Pended	1	1	0%	1	0	N/A	1	9	-88.9% ▼	6	9	-33.3% ▼	6	13	-53.8% ▼

Date	10/11-12/11	1/12-3/12	4/12-6/12	7/12-9/12	10/12-12/12	1/13-3/13	4/13-6/13	7/13-9/13	10/13-12/13	1/14-3/14	4/14-6/14	7/14-9/14	10/14-12/14	1/15-3/15	4/15-6/15	7/15-9/15	10/15-12/15	1/16-3/16	4/16-6/16	7/16-9/16	10/16-12/16	1/17-3/17	4/17-6/17	7/17-9/17	10/17-12/17
For Sale (End of Qtr)	3	8	6	0	1	0	1	3	7	6	10	3	5	2	16	3	3	5	2	1	0	0	5	4	3
New Listing	11	7	1	1	2	0	4	4	6	0	5	1	2	2	4	2	3	3	3	3	0	5	5	0	2
New Listing (3Mo Avg)	3.7	2.3	0.3	0.3	0.7	0	1.3	1.3	2	0	1.7	0.3	0.7	0.7	1.3	0.7	1	1	1	1	0	1.7	1.7	0	0.7
Sold	6	5	3	4	2	2	1	0	1	0	1	0	3	2	3	3	1	0	2	5	2	1	3	1	2
Sold (3Mo Avg)	2	1.7	1	1.3	0.7	0.7	0.3	0	0.3	0	0.3	0	1	0.7	1	1	0.3	0	0.7	1.7	0.7	0.3	1	0.3	0.7
Pended	9	2	4	5	2	0	1	0	1	0	1	4	0	3	4	1	1	0	6	3	0	4	0	1	1
Pended (3Mo Avg)	3	0.7	1.3	1.7	0.7	0	0.3	0	0.3	0	0.3	1.3	0	1	1.3	0.3	0.3	0	2	1	0	1.3	0	0.3	0.3
Months of Inventory (Closed Sales)	1.5	4.7	6	0	1.4	0	3.3	3	23.3	6	33.3	3	5	2.9	16	3	10	5	2.9	0.6	0	0	5	13.3	4.3
Months of Inventory (Pended Sales)	1	11.4	4.6	0	1.4	0	3.3	3	23.3	6	33.3	2.3	5	2	12.3	10	10	5	1	1	0	0	5	13.3	10
Absorption Rate (Closed Sales) %	66.7	21.3	16.7	4	70	2	30	0	4.3	0	3	0	20	35	6.3	33.3	10	0	35	170	2	1	20	7.5	23.3
Absorption Rate (Pended Sales) %	100	8.8	21.7	5	70	0	30	0	4.3	0	3	43.3	0	50	8.1	10	10	0	100	100	0	4	0	7.5	10
Avg. Active Price	219	138	76	0	75	0	130	0	156	0	139	0	97	97	120	133	136	0	102	134	0	0	141	145	150
Avg. Sold Price	65	58	180	67	60	54	79	0	150	0	60	0	71	57	86	69	125	0	83	96	120	110	120	125	130
Avg. Sq. Ft. Price (Sold)	46	34	144	50	47	41	56	0	147	0	47	0	59	49	63	52	71	0	58	70	76	80	84	99	98
Sold/List Diff. %	99	90	77	91	97	77	94	0	100	0	92	0	96	95	98	98	100	0	97	100	97	96	99	100	97
Sold/Orig LP Diff. %	100	89	72	91	91	77	94	0	100	0	94	0	96	90	92	94	97	0	93	99	98	96	100	100	98
Days on Market	26	108	317	163	225	213	52	0	33	0	37	0	233	78	257	178	945	0	178	127	104	42	72	71	76
Median	75	49	80	70	60	54	80	0	150	0	60	0	73	57	69	73	125	0	83	95	120	110	119	125	130

All reports are published January 2018, based on data available at the end of December 2017. All reports presented are based on data supplied by the Central Oregon MLS. Neither the Association nor its MLS guarantees or is in anyway responsible for its accuracy. Data maintained by the Association or its MLS may not reflect all real estate activities in the market. Information deemed reliable but not guaranteed.

Location: Jefferson County

Property Types: Farm - All Property Statuses - All Lot Sizes

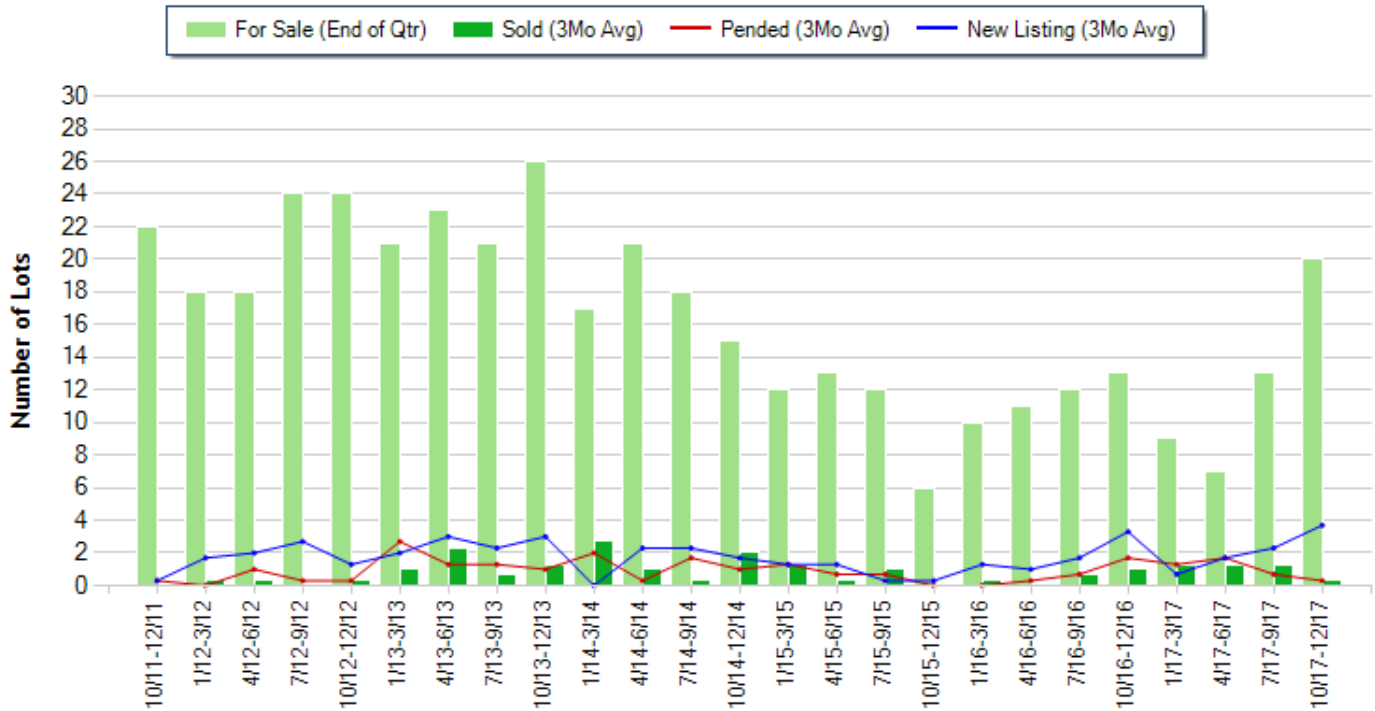
Price Range: \$0 - No Limit

Bedrooms: 0 - No Limit

Baths: 0 - No Limit

Year Built: 0 - No Limit

**Number of Homes For Sale vs. Sold vs. Pended vs. New Listing - Last 6 years (Quarterly)**



Copyright © Trendgraphix, Inc.

	Curnt vs. Prev Qtr			Curnt vs. Same Qtr 1 Yr Ago			Curnt vs. Same Qtr 6 Yrs Ago			Curnt vs. Same 12 Months 1 Yr Ago			Curnt vs. Same 12 Months 5 Yrs Ago		
	Oct. 17 to Dec. 17	Jul. 17 to Sep. 17	% Change	Oct. 17 to Dec. 17	Oct. 16 to Dec. 16	% Change	Oct. 17 to Dec. 17	Oct. 11 to Dec. 11	% Change	Jan. 17 to Dec. 17	Jan. 16 to Dec. 16	% Change	Jan. 17 to Dec. 17	Jan. 12 to Dec. 12	% Change
For Sale (End of Qtr)	20	13	53.8% ▲	20	13	53.8% ▲	20	22	-9.1% ▼	20	13	53.8% ▲	20	24	-16.7% ▼
New Listing	11	7	57.1% ▲	11	10	10% ▲	11	1	1,000% ▲	25	22	13.6% ▲	25	23	8.7% ▲
Sold	1	4	-75% ▼	1	3	-66.7% ▼	1	0	N/A	13	6	116.7% ▲	13	3	333.3% ▲
Pended	1	2	-50% ▼	1	5	-80% ▼	1	1	0%	12	8	50% ▲	12	5	140% ▲

Date	10/11 - 12/11	1/12- 3/12	4/12- 6/12	7/12- 9/12	10/12 - 12/12	1/13- 3/13	4/13- 6/13	7/13- 9/13	10/13 - 12/13	1/14- 3/14	4/14- 6/14	7/14- 9/14	10/14 - 12/14	1/15- 3/15	4/15- 6/15	7/15- 9/15	10/15 - 12/15	1/16- 3/16	4/16- 6/16	7/16- 9/16	10/16 - 12/16	1/17- 3/17	4/17- 6/17	7/17- 9/17	10/17 - 12/17
For Sale (End of Qtr)	22	18	18	24	24	21	23	21	26	17	21	18	15	12	13	12	6	10	11	12	13	9	7	13	20
New Listing	1	5	6	8	4	6	9	7	9	0	7	7	5	4	4	1	1	4	3	5	10	2	5	7	11
New Listing (3Mo Avg)	0.3	1.7	2	2.7	1.3	2	3	2.3	3	0	2.3	2.3	1.7	1.3	1.3	0.3	0.3	1.3	1	1.7	3.3	0.7	1.7	2.3	3.7
Sold	0	1	1	0	1	3	7	2	4	8	3	1	6	4	1	3	0	1	0	2	3	4	4	4	1
Sold (3Mo Avg)	0	0.3	0.3	0	0.3	1	2.3	0.7	1.3	2.7	1	0.3	2	1.3	0.3	1	0	0.3	0	0.7	1	1.3	1.3	1.3	0.3
Pended	1	0	3	1	1	8	4	4	3	6	1	5	3	4	2	2	0	0	1	2	5	4	5	2	1
Pended (3Mo Avg)	0.3	0	1	0.3	0.3	2.7	1.3	1.3	1	2	0.3	1.7	1	1.3	0.7	0.7	0	0	0.3	0.7	1.7	1.3	1.7	0.7	0.3
Months of Inventory (Closed Sales)	22	60	60	24	80	21	10	30	20	6.3	21	60	7.5	9.2	43.3	12	6	33.3	11	17.1	13	6.9	5.4	10	66.7
Months of Inventory (Pended Sales)	73.3	18	18	80	80	7.8	17.7	16.2	26	8.5	70	10.6	15	9.2	18.6	17.1	6	10	36.7	17.1	7.6	6.9	4.1	18.6	66.7
Absorption Rate (Closed Sales) %	0	1.7	1.7	0	1.3	4.8	10	3.3	5	15.9	4.8	1.7	13.3	10.8	2.3	8.3	0	3	0	5.8	7.7	14.4	18.6	10	1.5
Absorption Rate (Pended Sales) %	1.4	0	5.6	1.3	1.3	12.9	5.7	6.2	3.8	11.8	1.4	9.4	6.7	10.8	5.4	5.8	0	0	2.7	5.8	13.1	14.4	24.3	5.4	1.5
Avg. Active Price	0	730	739	0	734	763	740	665	776	780	611	590	658	629	756	781	0	988	0	1005	1089	1224	1072	2968	2327
Avg. Sold Price	0	750	425	0	195	1010	640	357	1031	359	593	340	468	384	1075	411	0	250	0	593	293	446	254	1040	600
Avg. Sq. Ft. Price (Sold)	0	140	221	0	0	928	340	184	346	341	200	189	258	261	881	217	0	0	0	248	45	268	0	157	286
Sold/List Diff. %	0	75	82	0	83	82	91	93	90	94	87	80	98	87	84	96	0	85	0	97	86	96	90	93	97
Sold/Orig LP Diff. %	0	68	82	0	80	80	91	90	84	81	80	80	86	83	84	93	0	85	0	93	86	95	80	93	97
Days on Market	0	256	407	0	746	310	270	249	203	289	557	4	89	222	195	266	0	242	0	344	77	256	200	302	45
Median	0	750	425	0	195	525	530	357	1400	323	533	340	396	361	1075	415	0	250	0	593	275	454	250	730	600

All reports are published January 2018, based on data available at the end of December 2017. All reports presented are based on data supplied by the Central Oregon MLS. Neither the Association nor its MLS guarantees or is in anyway responsible for its accuracy. Data maintained by the Association or its MLS may not reflect all real estate activities in the market. Information deemed reliable but not guaranteed.



**Location:** Jefferson County

**Property Types:** All Land Prop - All Property Statuses - All Lot Sizes

**Price Range:** \$0 - No Limit

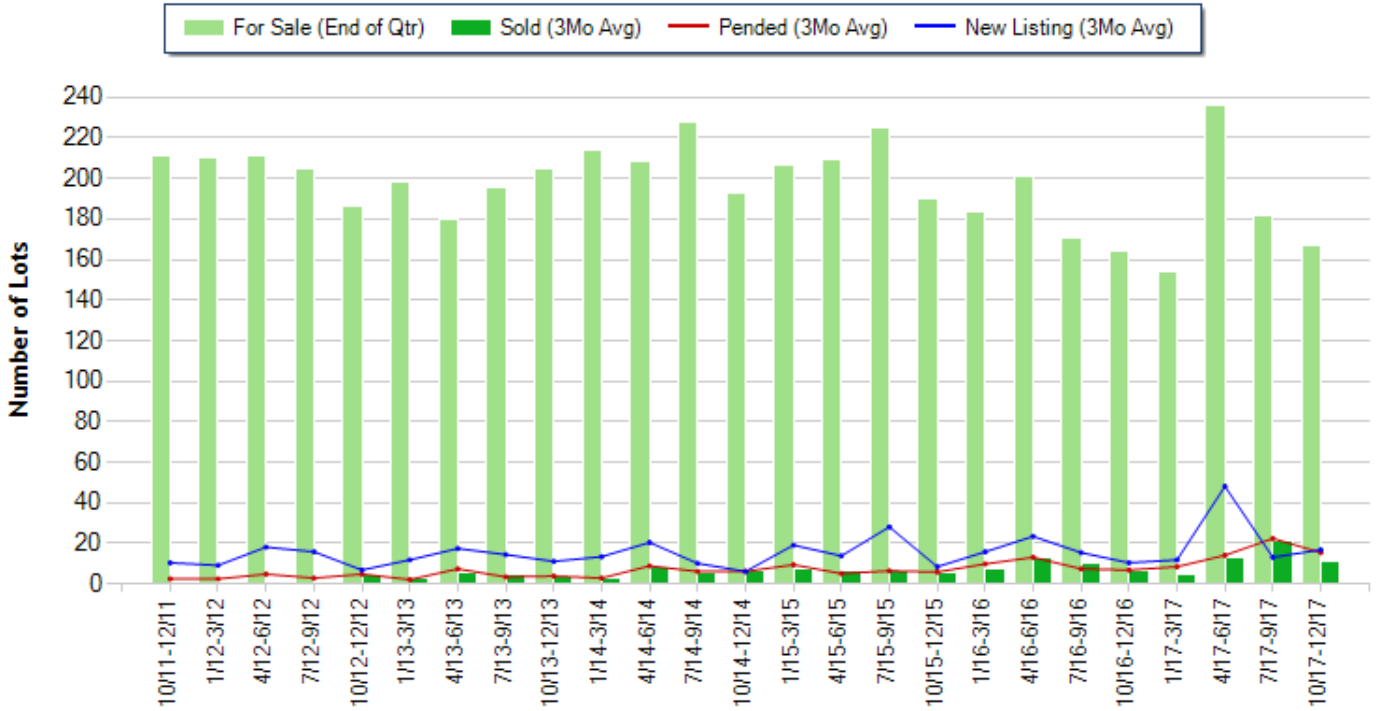
**SQFT Range:** 0 - No Limit

**Bedrooms:** 0 - No Limit

**Baths:** 0 - No Limit

**Year Built:** 0 - No Limit

**Number of Homes For Sale vs. Sold vs. Pended vs. New Listing - Last 6 years (Quarterly)**



Copyright © Trendgraphix, Inc.

	Curnt vs. Prev Qtr			Curnt vs. Same Qtr 1 Yr Ago			Curnt vs. Same Qtr 6 Yrs Ago			Curnt vs. Same 12 Months 1 Yr Ago			Curnt vs. Same 12 Months 5 Yrs Ago		
	Oct. 17 to Dec. 17	Jul. 17 to Sep. 17	% Change	Oct. 17 to Dec. 17	Oct. 16 to Dec. 16	% Change	Oct. 17 to Dec. 17	Oct. 11 to Dec. 11	% Change	Jan. 17 to Dec. 17	Jan. 16 to Dec. 16	% Change	Jan. 17 to Dec. 17	Jan. 12 to Dec. 12	% Change
For Sale (End of Qtr)	167	182	-8.2% ▼	167	164	1.8% ▲	167	211	-20.9% ▼	167	164	1.8% ▲	167	186	-10.2% ▼
New Listing	50	39	28.2% ▲	50	31	61.3% ▲	50	31	61.3% ▲	268	194	38.1% ▲	268	148	81.1% ▲
Sold	32	63	-49.2% ▼	32	19	68.4% ▲	32	0	N/A	148	108	37% ▲	148	14	957.1% ▲
Pended	46	67	-31.3% ▼	46	20	130% ▲	46	7	557.1% ▲	180	110	63.6% ▲	180	43	318.6% ▲

Date	10/11-12/11	1/12-3/12	4/12-6/12	7/12-9/12	10/12-12/12	1/13-3/13	4/13-6/13	7/13-9/13	10/13-12/13	1/14-3/14	4/14-6/14	7/14-9/14	10/14-12/14	1/15-3/15	4/15-6/15	7/15-9/15	10/15-12/15	1/16-3/16	4/16-6/16	7/16-9/16	10/16-12/16	1/17-3/17	4/17-6/17	7/17-9/17	10/17-12/17
For Sale (End of Qtr)	211	210	211	205	186	198	180	196	205	214	208	228	193	207	209	225	190	184	201	171	164	154	236	182	167
New Listing	31	27	54	47	20	35	52	43	33	40	61	30	18	57	41	84	25	47	70	46	31	35	144	39	50
New Listing (3Mo Avg)	10.3	9	18	15.7	6.7	11.7	17.3	14.3	11	13.3	20.3	10	6	19	13.7	28	8.3	15.7	23.3	15.3	10.3	11.7	48	13	16.7
Sold	0	0	0	0	14	9	17	13	10	9	24	17	18	22	18	20	16	22	38	29	19	15	38	63	32
Sold (3Mo Avg)	0	0	0	0	4.7	3	5.7	4.3	3.3	3	8	5.7	6	7.3	6	6.7	5.3	7.3	12.7	9.7	6.3	5	12.7	21	10.7
Pended	7	7	14	8	14	6	22	10	11	8	26	18	18	28	15	19	17	29	39	22	20	25	42	67	46
Pended (3Mo Avg)	2.3	2.3	4.7	2.7	4.7	2	7.3	3.3	3.7	2.7	8.7	6	6	9.3	5	6.3	5.7	9.7	13	7.3	6.7	8.3	14	22.3	15.3
Months of Inventory (Closed Sales)	211	210	211	205	39.6	66	31.6	45.6	62.1	71.3	26	40	32.2	28.4	34.8	33.6	35.8	25.2	15.8	17.6	26	30.8	18.6	8.7	15.6
Months of Inventory (Pended Sales)	91.7	91.3	44.9	75.9	39.6	99	24.7	59.4	55.4	79.3	23.9	38	32.2	22.3	41.8	35.7	33.3	19	15.5	23.4	24.5	18.6	16.9	8.2	10.9
Absorption Rate (Closed Sales) %	0	0	0	0	2.5	1.5	3.2	2.2	1.6	1.4	3.8	2.5	3.1	3.5	2.9	3	2.8	4	6.3	5.7	3.8	3.2	5.4	11.5	6.4
Absorption Rate (Pended Sales) %	1.1	1.1	2.2	1.3	2.5	1	4.1	1.7	1.8	1.3	4.2	2.6	3.1	4.5	2.4	2.8	3	5.3	6.5	4.3	4.1	5.4	5.9	12.3	9.2
Avg. Active Price	0	0	0	0	113	111	129	153	167	188	160	137	162	157	151	139	136	135	123	126	135	136	123	141	127
Avg. Sold Price	0	0	0	0	38	61	38	62	39	56	370	92	47	53	75	63	69	66	93	65	146	66	71	42	113
Avg. Sq. Ft. Price (Sold)	0	0	0	0	0	0	0	0	0	0	0	0	0	0	0	0	0	0	0	0	0	0	0	0	0
Sold/List Diff. %	0	0	0	0	81	94	86	90	91	89	90	87	87	89	89	89	90	88	92	91	92	96	92	95	94
Sold/Orig LP Diff. %	0	0	0	0	69	95	76	87	78	78	82	78	69	80	87	87	88	81	83	87	90	93	86	94	92
Days on Market	0	0	0	0	155	328	228	158	307	376	141	160	335	335	186	166	241	222	186	175	206	218	179	176	222
Median	0	0	0	0	20	39	28	65	33	50	45	65	49	45	71	63	45	54	64	60	58	48	70	30	36

All reports are published January 2018, based on data available at the end of December 2017. All reports presented are based on data supplied by the Central Oregon MLS. Neither the Association nor its MLS guarantees or is in anyway responsible for its accuracy. Data maintained by the Association or its MLS may not reflect all real estate activities in the market. Information deemed reliable but not guaranteed.



**Location:** Jefferson County

**Property Types:** Mobile Home - All Property Statuses - All Lot Sizes

**Price Range:** \$0 - No Limit

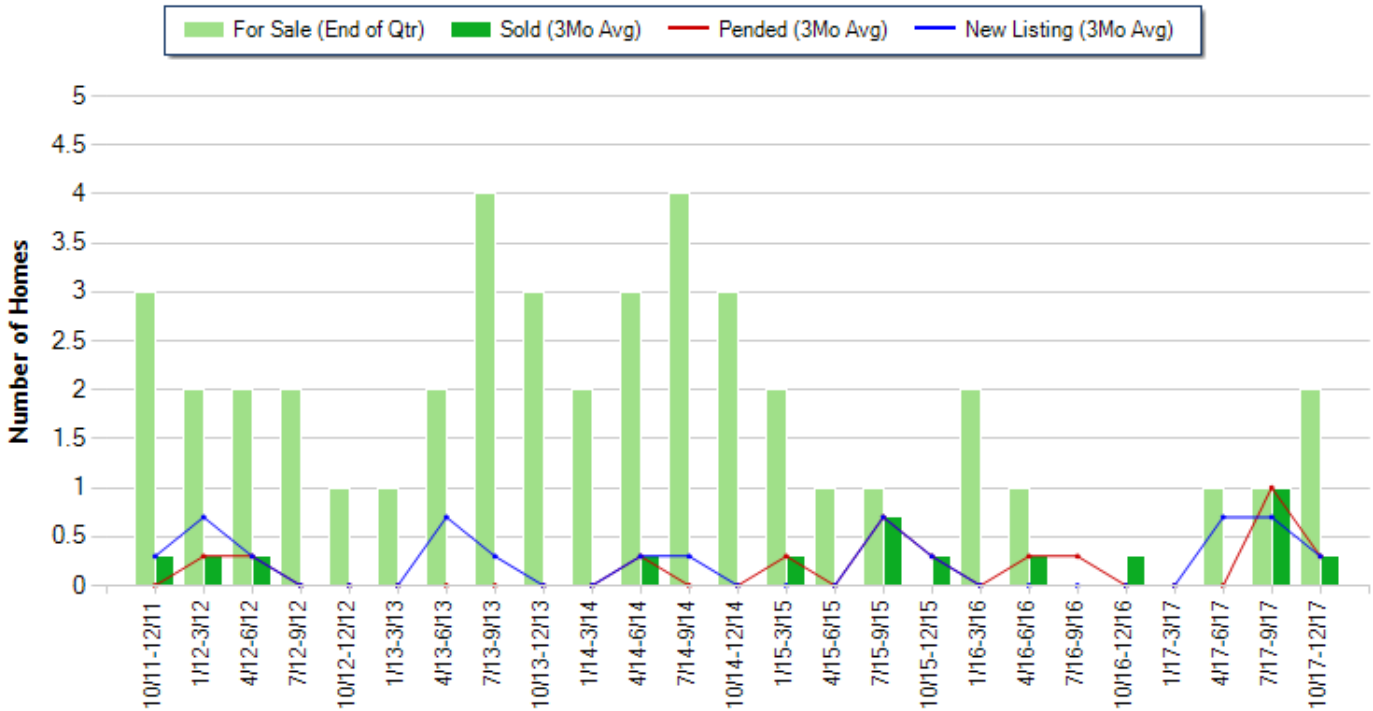
**SQFT Range:** 0 - No Limit

**Bedrooms:** 0 - No Limit

**Baths:** 0 - No Limit

**Year Built:** 0 - No Limit

**Number of Homes For Sale vs. Sold vs. Pended vs. New Listing - Last 6 years (Quarterly)**



Copyright © Trendgraphix, Inc.

	Curnt vs. Prev Qtr			Curnt vs. Same Qtr 1 Yr Ago			Curnt vs. Same Qtr 6 Yrs Ago			Curnt vs. Same 12 Months 1 Yr Ago			Curnt vs. Same 12 Months 5 Yrs Ago		
	Oct. 17 to Dec. 17	Jul. 17 to Sep. 17	% Change	Oct. 17 to Dec. 17	Oct. 16 to Dec. 16	% Change	Oct. 17 to Dec. 17	Oct. 11 to Dec. 11	% Change	Jan. 17 to Dec. 17	Jan. 16 to Dec. 16	% Change	Jan. 17 to Dec. 17	Jan. 12 to Dec. 12	% Change
For Sale (End of Qtr)	2	1	100% ▲	2	0	N/A	2	3	-33.3% ▼	2	0	N/A	2	1	100% ▲
New Listing	1	2	-50% ▼	1	0	N/A	1	1	0%	5	0	N/A	5	3	66.7% ▲
Sold	1	3	-66.7% ▼	1	1	0%	1	1	0%	4	2	100% ▲	4	2	100% ▲
Pended	1	3	-66.7% ▼	1	0	N/A	1	0	N/A	4	2	100% ▲	4	2	100% ▲

Date	10/11-12/11	1/12-3/12	4/12-6/12	7/12-9/12	10/12-12/12	1/13-3/13	4/13-6/13	7/13-9/13	10/13-12/13	1/14-3/14	4/14-6/14	7/14-9/14	10/14-12/14	1/15-3/15	4/15-6/15	7/15-9/15	10/15-12/15	1/16-3/16	4/16-6/16	7/16-9/16	10/16-12/16	1/17-3/17	4/17-6/17	7/17-9/17	10/17-12/17
For Sale (End of Qtr)	3	2	2	2	1	1	2	4	3	2	3	4	3	2	1	1	0	2	1	0	0	0	1	1	2
New Listing	1	2	1	0	0	0	2	1	0	0	1	1	0	0	0	2	1	0	0	0	0	0	0	2	1
New Listing (3Mo Avg)	0.3	0.7	0.3	0	0	0	0.7	0.3	0	0	0.3	0.3	0	0	0	0.7	0.3	0	0	0	0	0	0	0.7	0.3
Sold	1	1	1	0	0	0	0	0	0	0	1	0	0	1	0	2	1	0	1	0	1	0	0	0	3
Sold (3Mo Avg)	0.3	0.3	0.3	0	0	0	0	0	0	0	0.3	0	0	0.3	0	0.7	0.3	0	0.3	0	0.3	0	0	0	1
Pended	0	1	1	0	0	0	0	0	0	0	1	0	0	1	0	2	1	0	1	1	0	0	0	0	3
Pended (3Mo Avg)	0	0.3	0.3	0	0	0	0	0	0	0	0.3	0	0	0.3	0	0.7	0.3	0	0.3	0.3	0	0	0	0	1
Months of Inventory (Closed Sales)	10	6.7	6.7	2	1	1	2	4	3	2	10	4	3	6.7	1	1.4	0	2	3.3	0	0	0	1	1	6.7
Months of Inventory (Pended Sales)	3	6.7	6.7	2	1	1	2	4	3	2	10	4	3	6.7	1	1.4	0	2	3.3	0	0	0	1	1	6.7
Absorption Rate (Closed Sales) %	10	15	15	0	0	0	0	0	0	0	10	0	0	15	0	70	1	0	30	0	1	0	0	100	15
Absorption Rate (Pended Sales) %	0	15	15	0	0	0	0	0	0	0	10	0	0	15	0	70	1	0	30	1	0	0	0	100	15
Avg. Active Price	82	118	100	0	0	0	0	0	0	0	55	0	0	59	0	17	0	0	65	0	0	0	0	0	79
Avg. Sold Price	19	8	8	0	0	0	0	0	0	0	45	0	0	36	0	18	14	0	16	0	60	0	0	23	
Avg. Sq. Ft. Price (Sold)	12	11	8	0	0	0	0	0	0	0	114	0	0	68	0	22	15	0	20	0	114	0	0	29	
Sold/List Diff. %	100	80	100	0	0	0	0	0	0	0	73	0	0	95	0	92	82	0	89	0	92	0	0	92	
Sold/Orig LP Diff. %	76	80	100	0	0	0	0	0	0	0	73	0	0	62	0	81	67	0	114	0	92	0	0	81	
Days on Market	78	23	73	0	0	0	0	0	0	0	26	0	0	489	0	377	78	0	94	0	360	0	0	49	
Median	19	8	8	0	0	0	0	0	0	0	45	0	0	36	0	18	14	0	16	0	60	0	0	24	

All reports are published January 2018, based on data available at the end of December 2017. All reports presented are based on data supplied by the Central Oregon MLS. Neither the Association nor its MLS guarantees or is in anyway responsible for its accuracy. Data maintained by the Association or its MLS may not reflect all real estate activities in the market. Information deemed reliable but not guaranteed.

Location: Jefferson County

Property Types: Multi Family - All Property Statuses - All Lot Sizes

Price Range: \$0 - No Limit

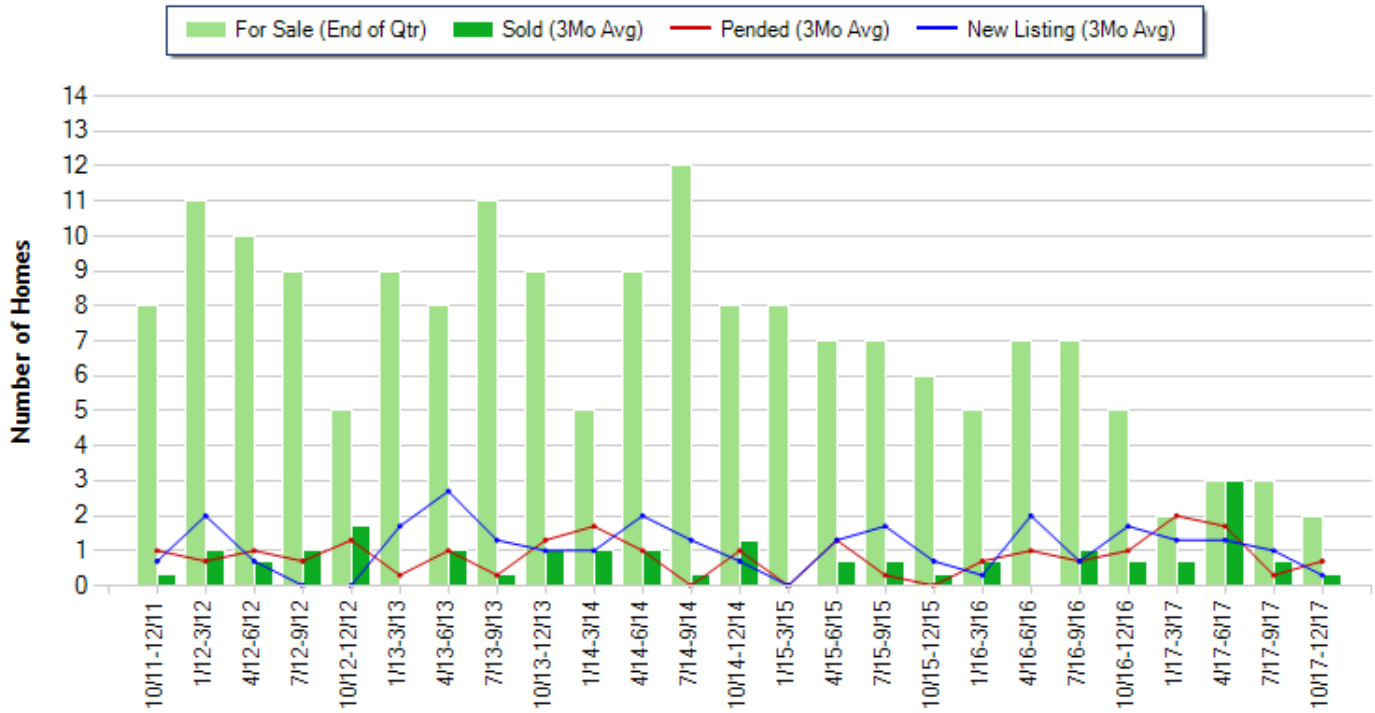
SQFT Range: 0 - No Limit

Bedrooms: 0 - No Limit

Baths: 0 - No Limit

Year Built: 0 - No Limit

**Number of Homes For Sale vs. Sold vs. Pended vs. New Listing - Last 6 years (Quarterly)**



Copyright © Trendgraphix, Inc.

	Curnt vs. Prev Qtr			Curnt vs. Same Qtr 1 Yr Ago			Curnt vs. Same Qtr 6 Yrs Ago			Curnt vs. Same 12 Months 1 Yr Ago			Curnt vs. Same 12 Months 5 Yrs Ago		
	Oct. 17 to Dec. 17	Jul. 17 to Sep. 17	% Change	Oct. 17 to Dec. 17	Oct. 16 to Dec. 16	% Change	Oct. 17 to Dec. 17	Oct. 11 to Dec. 11	% Change	Jan. 17 to Dec. 17	Jan. 16 to Dec. 16	% Change	Jan. 17 to Dec. 17	Jan. 12 to Dec. 12	% Change
For Sale (End of Qtr)	2	3	-33.3% ▼	2	5	-60% ▼	2	8	-75% ▼	2	5	-60% ▼	2	5	-60% ▼
New Listing	1	3	-66.7% ▼	1	5	-80% ▼	1	2	-50% ▼	12	14	-14.3% ▼	12	8	50% ▲
Sold	1	2	-50% ▼	1	2	-50% ▼	1	1	0%	14	7	100% ▲	14	13	7.7% ▲
Pended	2	1	100% ▲	2	3	-33.3% ▼	2	3	-33.3% ▼	14	10	40% ▲	14	11	27.3% ▲

Date	10/11-12/11	1/12-3/12	4/12-6/12	7/12-9/12	10/12-12/12	1/13-3/13	4/13-6/13	7/13-9/13	10/13-12/13	1/14-3/14	4/14-6/14	7/14-9/14	10/14-12/14	1/15-3/15	4/15-6/15	7/15-9/15	10/15-12/15	1/16-3/16	4/16-6/16	7/16-9/16	10/16-12/16	1/17-3/17	4/17-6/17	7/17-9/17	10/17-12/17
For Sale (End of Qtr)	8	11	10	9	5	9	8	11	9	5	9	12	8	8	7	7	6	5	7	7	5	2	3	3	2
New Listing	2	6	2	0	0	5	8	4	3	3	6	4	2	0	4	5	2	1	6	2	5	4	4	3	1
New Listing (3Mo Avg)	0.7	2	0.7	0	0	1.7	2.7	1.3	1	1	2	1.3	0.7	1	1.3	1.7	0.7	0.3	2	0.7	1.7	1.3	1.3	1	0.3
Sold	1	3	2	3	5	0	3	1	3	3	3	1	4	0	2	2	1	2	0	3	2	2	9	2	1
Sold (3Mo Avg)	0.3	1	0.7	1	1.7	0	1	0.3	1	1	1	0.3	1.3	0	0.7	0.7	0.3	0.7	0	1	0.7	0.7	3	0.7	0.3
Pended	3	2	3	2	4	1	3	1	4	5	3	0	3	0	4	1	0	2	3	2	3	6	5	1	2
Pended (3Mo Avg)	1	0.7	1	0.7	1.3	0.3	1	0.3	1.3	1.7	1	0	1	0	1.3	0.3	0	0.7	1	0.7	1	2	1.7	0.3	0.7
Months of Inventory (Closed Sales)	26.7	11	14.3	9	2.9	9	8	36.7	9	5	9	40	6.2	8	10	10	20	7.1	7	7	7.1	2.9	1	4.3	6.7
Months of Inventory (Pended Sales)	8	15.7	10	12.9	3.8	30	8	36.7	6.9	2.9	9	12	8	8	5.4	23.3	6	7.1	7	10	5	1	1.8	10	2.9
Absorption Rate (Closed Sales) %	3.8	9.1	7	11.1	34	0	12.5	2.7	11.1	20	11.1	2.5	16.3	0	10	10	5	14	0	14.3	14	35	100	23.3	15
Absorption Rate (Pended Sales) %	12.5	6.4	10	7.8	26	3.3	12.5	2.7	14.4	34	11.1	0	12.5	0	18.6	4.3	0	14	14.3	10	20	100	56.7	10	35
Avg. Active Price	165	153	166	180	226	0	227	216	291	316	368	291	245	0	290	377	211	293	0	268	213	403	307	280	403
Avg. Sold Price	100	66	80	98	125	0	153	50	176	166	425	110	284	0	92	105	110	131	0	317	312	157	205	209	174
Avg. Sq. Ft. Price (Sold)	50	32	33	42	37	0	31	29	44	20	33	56	63	0	49	70	52	60	0	59	71	81	76	82	63
Sold/List Diff. %	100	81	91	88	94	0	98	63	95	92	97	96	95	0	94	93	85	91	0	93	99	98	94	85	92
Sold/Orig LP Diff. %	88	69	91	78	84	0	98	61	92	83	96	96	95	0	91	91	85	92	0	93	98	95	94	85	87
Days on Market	107	144	92	286	284	0	54	174	84	223	167	60	199	0	117	412	92	83	0	74	306	360	95	24	123
Median	100	67	80	96	107	0	75	51	189	118	116	110	125	0	92	105	110	131	0	190	312	157	200	209	175

All reports are published January 2018, based on data available at the end of December 2017. All reports presented are based on data supplied by the Central Oregon MLS. Neither the Association nor its MLS guarantees or is in anyway responsible for its accuracy. Data maintained by the Association or its MLS may not reflect all real estate activities in the market. Information deemed reliable but not guaranteed.