

Location: Jefferson County

Property Types: All Residential Prop - All Property Statuses - All Lot Sizes

Price Range: \$0 - No Limit

SQFT Range: 0 - No Limit

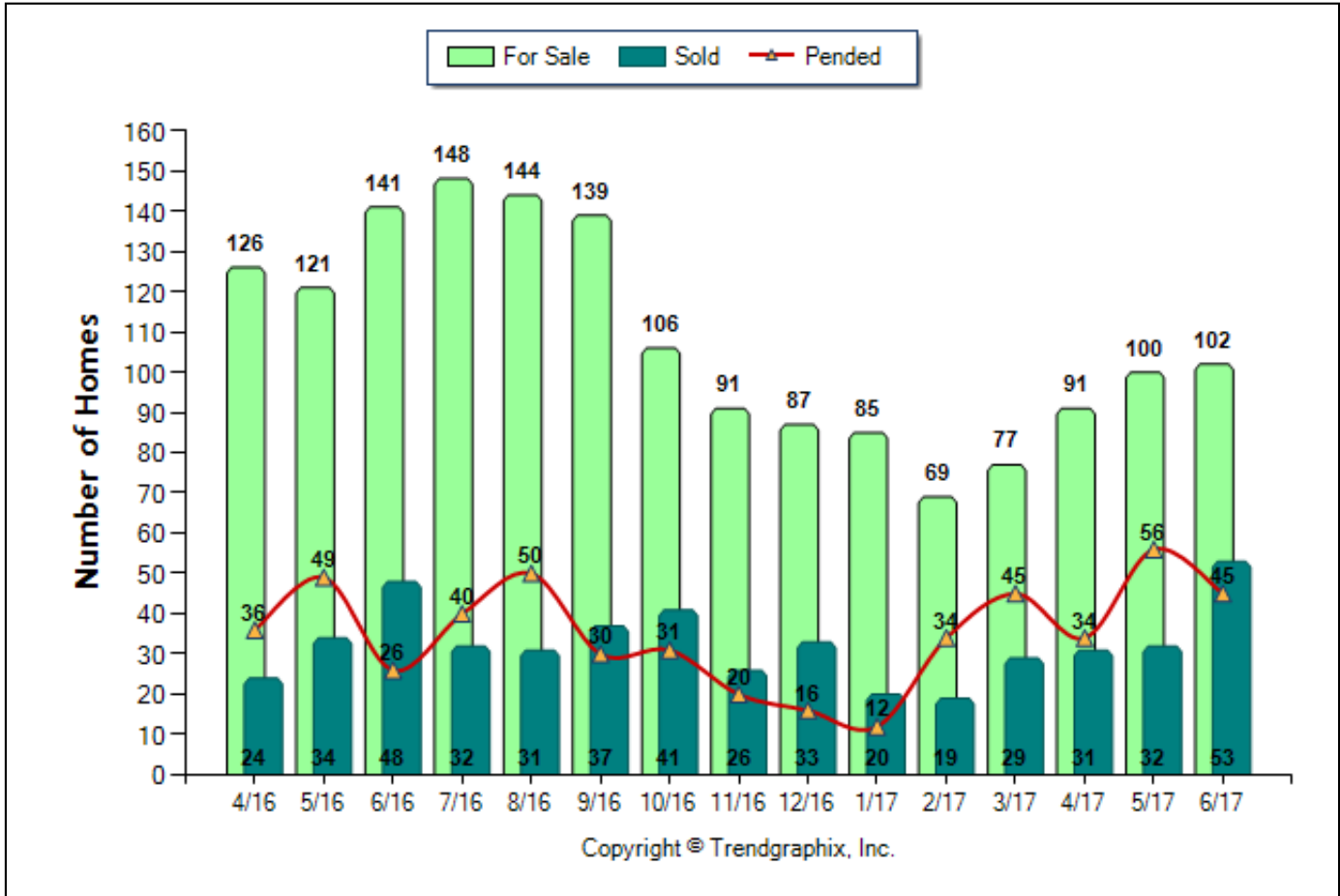
Bedrooms: 0 - No Limit

Baths: 0 - No Limit

Year Built: 0 - No Limit

Number of Homes For Sale vs. Sold vs. Pended (Apr. 2016 - Jun. 2017)

Prepared for you by: MLSCO



	Curnt vs. Prev Month			Curnt vs. Same Month 1 Yr Ago			Curnt vs. Same Qtr 1 Yr Ago		
	Jun. 17	May. 17	% Change	Jun. 17	Jun. 16	% Change	Apr. 17 to Jun. 17	Apr. 16 to Jun. 16	% Change
For Sale	102	100	2% ▲	102	141	-27.7% ▼	102	141	-27.7% ▼
Sold	53	32	65.6% ▲	53	48	10.4% ▲	116	106	9.4% ▲
Pended	45	56	-19.6% ▼	45	26	73.1% ▲	135	111	21.6% ▲

Date	4/16	5/16	6/16	7/16	8/16	9/16	10/16	11/16	12/16	1/17	2/17	3/17	4/17	5/17	6/17
For Sale	126	121	141	148	144	139	106	91	87	85	69	77	91	100	102
New Listing	36	47	54	59	52	32	14	22	13	22	20	55	56	63	55
Sold	24	34	48	32	31	37	41	26	33	20	19	29	31	32	53
Pended	36	49	26	40	50	30	31	20	16	12	34	45	34	56	45
Months of Inventory (Closed Sales)	5.3	3.6	2.9	4.6	4.6	3.8	2.6	3.5	2.6	4.3	3.6	2.7	2.9	3.1	1.9
Months of Inventory (Pended Sales)	3.5	2.5	5.4	3.7	2.9	4.6	3.4	4.6	5.4	7.1	2	1.7	2.7	1.8	2.3
Absorption Rate (Closed Sales) %	19	28.1	34	21.6	21.5	26.6	38.7	28.6	37.9	23.5	27.5	37.7	34.1	32	52
Absorption Rate (Pended Sales) %	28.6	40.5	18.4	27	34.7	21.6	29.2	22	18.4	14.1	49.3	58.4	37.4	56	44.1
Avg. Active Price	335	349	337	336	304	334	315	291	284	274	300	296	320	345	339
Avg. Sold Price	250	198	197	210	186	176	210	216	201	186	317	213	212	220	216
Avg. Sq. Ft. Price (Sold)	134	117	130	122	126	108	122	139	118	113	172	138	139	133	143
Sold/List Diff. %	98	97	97	98	93	97	98	99	96	95	96	97	96	98	97
Sold/Orig LP Diff. %	97	93	94	97	89	96	98	95	92	93	94	94	95	98	97
Days on Market	151	157	137	145	175	116	131	113	170	131	201	179	121	92	103
Median	176	167	170	196	148	167	200	157	205	170	215	200	210	187	194

All reports are published July 2017, based on data available at the end of June 2017. All reports presented are based on data supplied by the Central Oregon MLS. Neither the Association nor its MLS guarantees or is in anyway responsible for its accuracy. Data maintained by the Association or its MLS may not reflect all real estate activities in the market. Information deemed reliable but not guaranteed.

Location: Jefferson County

Property Types: All Residential Prop - All Property Statuses - All Lot Sizes

Price Range: \$0 - No Limit

SQFT Range: 0 - No Limit

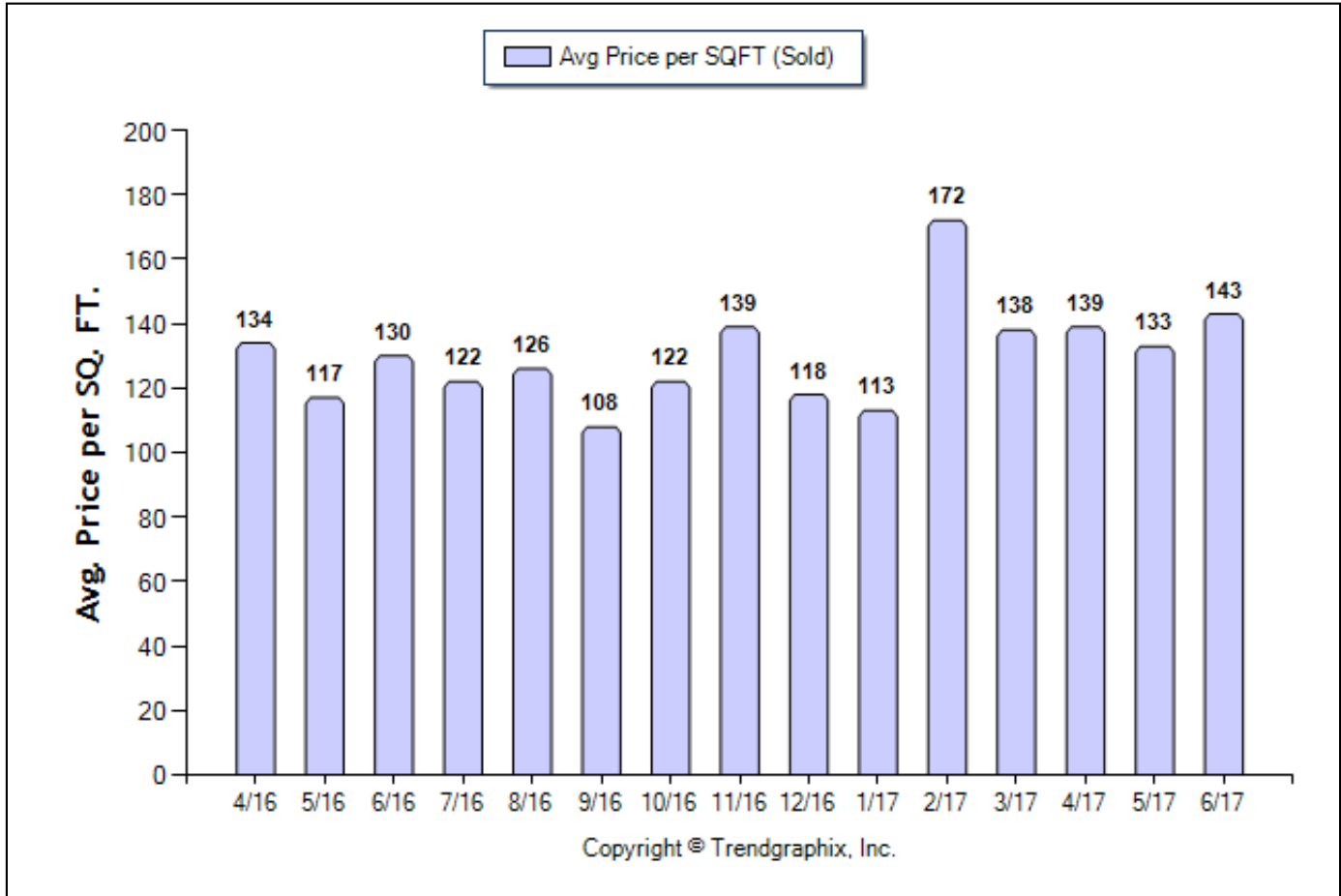
Bedrooms: 0 - No Limit

Baths: 0 - No Limit

Year Built: 0 - No Limit

Average Price per SQFT (Sold) (Apr. 2016 - Jun. 2017)

Prepared for you by: MLSCO



	Curnt vs. Prev Month			Curnt vs. Same Month 1 Yr Ago			Curnt vs. Same Qtr 1 Yr Ago		
	Jun. 17	May. 17	% Change	Jun. 17	Jun. 16	% Change	Apr. 17 to Jun. 17	Apr. 16 to Jun. 16	% Change
Avg. Sq. Ft. Price (Sold)	143	133	7.5% ▲	143	130	10% ▲	139.17	126.74	9.8% ▲

Date	4/16	5/16	6/16	7/16	8/16	9/16	10/16	11/16	12/16	1/17	2/17	3/17	4/17	5/17	6/17
For Sale	126	121	141	148	144	139	106	91	87	85	69	77	91	100	102
New Listing	36	47	54	59	52	32	14	22	13	22	20	55	56	63	55
Sold	24	34	48	32	31	37	41	26	33	20	19	29	31	32	53
Pended	36	49	26	40	50	30	31	20	16	12	34	45	34	56	45
Months of Inventory (Closed Sales)	5.3	3.6	2.9	4.6	4.6	3.8	2.6	3.5	2.6	4.3	3.6	2.7	2.9	3.1	1.9
Months of Inventory (Pended Sales)	3.5	2.5	5.4	3.7	2.9	4.6	3.4	4.6	5.4	7.1	2	1.7	2.7	1.8	2.3
Absorption Rate (Closed Sales) %	19	28.1	34	21.6	21.5	26.6	38.7	28.6	37.9	23.5	27.5	37.7	34.1	32	52
Absorption Rate (Pended Sales) %	28.6	40.5	18.4	27	34.7	21.6	29.2	22	18.4	14.1	49.3	58.4	37.4	56	44.1
Avg. Active Price	335	349	337	336	304	334	315	291	284	274	300	296	320	345	339
Avg. Sold Price	250	198	197	210	186	176	210	216	201	186	317	213	212	220	216
Avg. Sq. Ft. Price (Sold)	134	117	130	122	126	108	122	139	118	113	172	138	139	133	143
Sold/List Diff. %	98	97	97	98	93	97	98	99	96	95	96	97	96	98	97
Sold/Orig LP Diff. %	97	93	94	97	89	96	98	95	92	93	94	94	95	98	97
Days on Market	151	157	137	145	175	116	131	113	170	131	201	179	121	92	103
Median	176	167	170	196	148	167	200	157	205	170	215	200	210	187	194

All reports are published July 2017, based on data available at the end of June 2017. All reports presented are based on data supplied by the Central Oregon MLS. Neither the Association nor its MLS guarantees or is in anyway responsible for its accuracy. Data maintained by the Association or its MLS may not reflect all real estate activities in the market. Information deemed reliable but not guaranteed.

Location: Jefferson County

Property Types: All Residential Prop - All Property Statuses - All Lot Sizes

Price Range: \$0 - No Limit

SQFT Range: 0 - No Limit

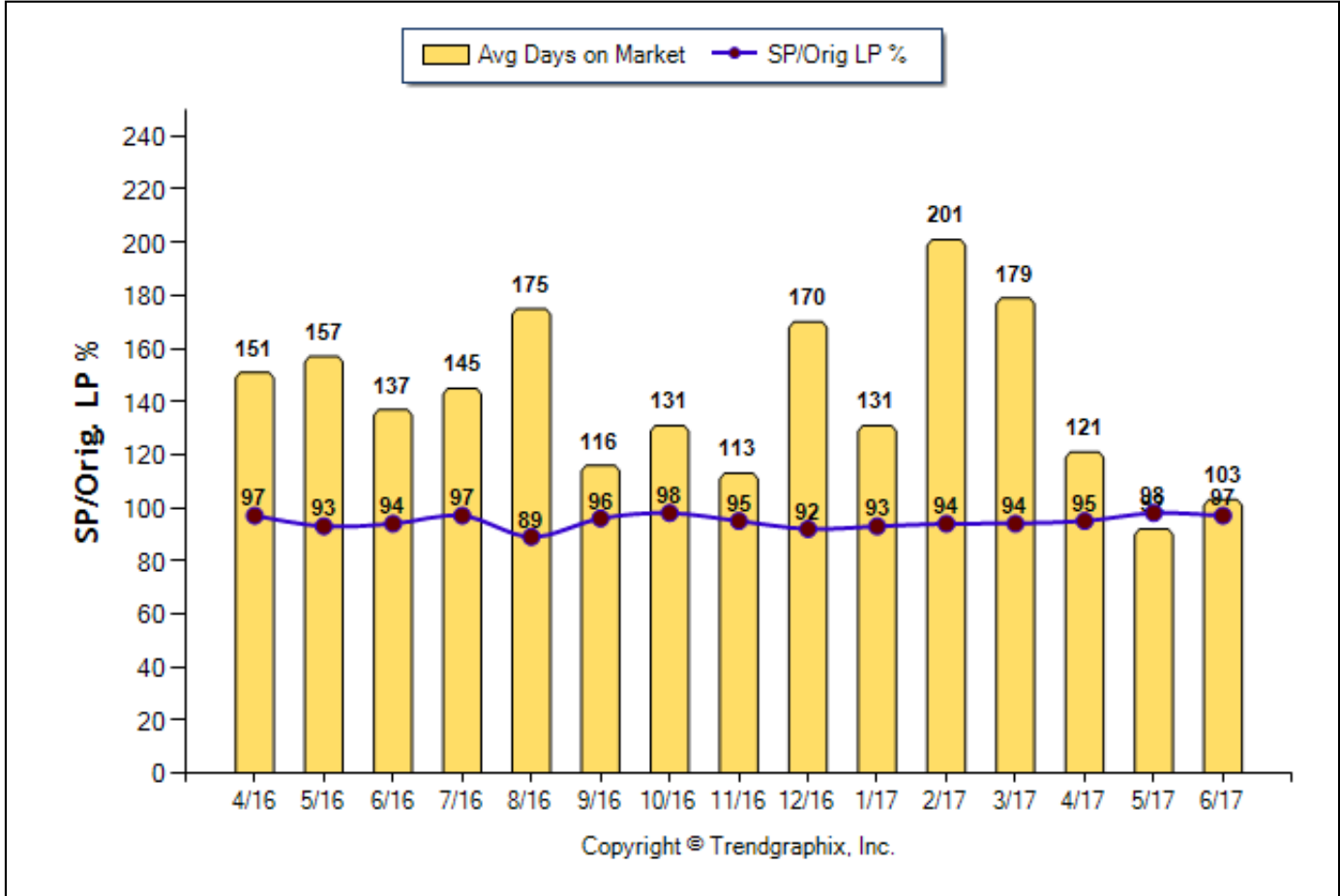
Bedrooms: 0 - No Limit

Baths: 0 - No Limit

Year Built: 0 - No Limit

Avg Days On Market & SP/Orig LP % (Apr. 2016 - Jun. 2017)

Prepared for you by: MLSCO



	Curnt vs. Prev Month			Curnt vs. Same Month 1 Yr Ago			Curnt vs. Same Qtr 1 Yr Ago		
	Jun. 17	May. 17	% Change	Jun. 17	Jun. 16	% Change	Apr. 17 to Jun. 17	Apr. 16 to Jun. 16	% Change
Days on Market	103	92	12% ▲	103	137	-24.8% ▼	105	147	-28.6% ▼
Sold/Orig LP Diff. %	97	98	-1% ▼	97	94	3.2% ▲	97	94	3.2% ▲

Date	4/16	5/16	6/16	7/16	8/16	9/16	10/16	11/16	12/16	1/17	2/17	3/17	4/17	5/17	6/17
For Sale	126	121	141	148	144	139	106	91	87	85	69	77	91	100	102
New Listing	36	47	54	59	52	32	14	22	13	22	20	55	56	63	55
Sold	24	34	48	32	31	37	41	26	33	20	19	29	31	32	53
Pended	36	49	26	40	50	30	31	20	16	12	34	45	34	56	45
Months of Inventory (Closed Sales)	5.3	3.6	2.9	4.6	4.6	3.8	2.6	3.5	2.6	4.3	3.6	2.7	2.9	3.1	1.9
Months of Inventory (Pended Sales)	3.5	2.5	5.4	3.7	2.9	4.6	3.4	4.6	5.4	7.1	2	1.7	2.7	1.8	2.3
Absorption Rate (Closed Sales) %	19	28.1	34	21.6	21.5	26.6	38.7	28.6	37.9	23.5	27.5	37.7	34.1	32	52
Absorption Rate (Pended Sales) %	28.6	40.5	18.4	27	34.7	21.6	29.2	22	18.4	14.1	49.3	58.4	37.4	56	44.1
Avg. Active Price	335	349	337	336	304	334	315	291	284	274	300	296	320	345	339
Avg. Sold Price	250	198	197	210	186	176	210	216	201	186	317	213	212	220	216
Avg. Sq. Ft. Price (Sold)	134	117	130	122	126	108	122	139	118	113	172	138	139	133	143
Sold/List Diff. %	98	97	97	98	93	97	98	99	96	95	96	97	96	98	97
Sold/Orig LP Diff. %	97	93	94	97	89	96	98	95	92	93	94	94	95	98	97
Days on Market	151	157	137	145	175	116	131	113	170	131	201	179	121	92	103
Median	176	167	170	196	148	167	200	157	205	170	215	200	210	187	194

All reports are published July 2017, based on data available at the end of June 2017. All reports presented are based on data supplied by the Central Oregon MLS. Neither the Association nor its MLS guarantees or is in anyway responsible for its accuracy. Data maintained by the Association or its MLS may not reflect all real estate activities in the market. Information deemed reliable but not guaranteed.

Location: Jefferson County

Property Types: All Residential Prop - All Property Statuses - All Lot Sizes

Price Range: \$0 - No Limit

SQFT Range: 0 - No Limit

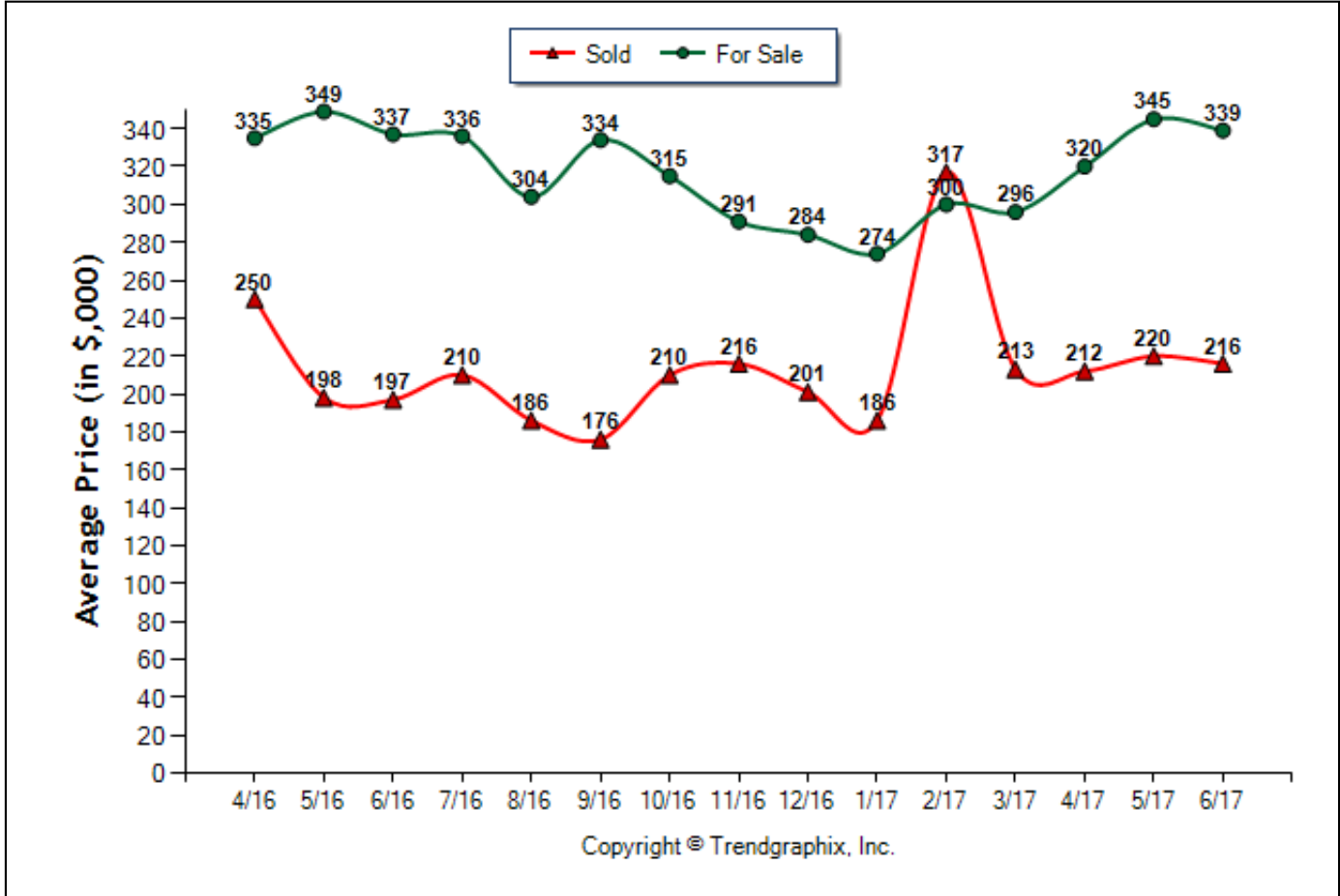
Bedrooms: 0 - No Limit

Baths: 0 - No Limit

Year Built: 0 - No Limit

Average Price of For Sale and Sold (Apr. 2016 - Jun. 2017)

Prepared for you by: MLSCO



	Curnt vs. Prev Month			Curnt vs. Same Month 1 Yr Ago			Curnt vs. Same Qtr 1 Yr Ago		
	Jun. 17	May. 17	% Change	Jun. 17	Jun. 16	% Change	Apr. 17 to Jun. 17	Apr. 16 to Jun. 16	% Change
Avg. Active Price	339	345	-1.7% ▼	339	337	0.6% ▲	335	340	-1.5% ▼
Avg. Sold Price	216	220	-1.8% ▼	216	197	9.6% ▲	216	209	3.3% ▲

Date	4/16	5/16	6/16	7/16	8/16	9/16	10/16	11/16	12/16	1/17	2/17	3/17	4/17	5/17	6/17
For Sale	126	121	141	148	144	139	106	91	87	85	69	77	91	100	102
New Listing	36	47	54	59	52	32	14	22	13	22	20	55	56	63	55
Sold	24	34	48	32	31	37	41	26	33	20	19	29	31	32	53
Pended	36	49	26	40	50	30	31	20	16	12	34	45	34	56	45
Months of Inventory (Closed Sales)	5.3	3.6	2.9	4.6	4.6	3.8	2.6	3.5	2.6	4.3	3.6	2.7	2.9	3.1	1.9
Months of Inventory (Pended Sales)	3.5	2.5	5.4	3.7	2.9	4.6	3.4	4.6	5.4	7.1	2	1.7	2.7	1.8	2.3
Absorption Rate (Closed Sales) %	19	28.1	34	21.6	21.5	26.6	38.7	28.6	37.9	23.5	27.5	37.7	34.1	32	52
Absorption Rate (Pended Sales) %	28.6	40.5	18.4	27	34.7	21.6	29.2	22	18.4	14.1	49.3	58.4	37.4	56	44.1
Avg. Active Price	335	349	337	336	304	334	315	291	284	274	300	296	320	345	339
Avg. Sold Price	250	198	197	210	186	176	210	216	201	186	317	213	212	220	216
Avg. Sq. Ft. Price (Sold)	134	117	130	122	126	108	122	139	118	113	172	138	139	133	143
Sold/List Diff. %	98	97	97	98	93	97	98	99	96	95	96	97	96	98	97
Sold/Orig LP Diff. %	97	93	94	97	89	96	98	95	92	93	94	94	95	98	97
Days on Market	151	157	137	145	175	116	131	113	170	131	201	179	121	92	103
Median	176	167	170	196	148	167	200	157	205	170	215	200	210	187	194

All reports are published July 2017, based on data available at the end of June 2017. All reports presented are based on data supplied by the Central Oregon MLS. Neither the Association nor its MLS guarantees or is in anyway responsible for its accuracy. Data maintained by the Association or its MLS may not reflect all real estate activities in the market. Information deemed reliable but not guaranteed.

Location: Jefferson County

Property Types: All Residential Prop - All Property Statuses - All Lot Sizes

Price Range: \$0 - No Limit

SQFT Range: 0 - No Limit

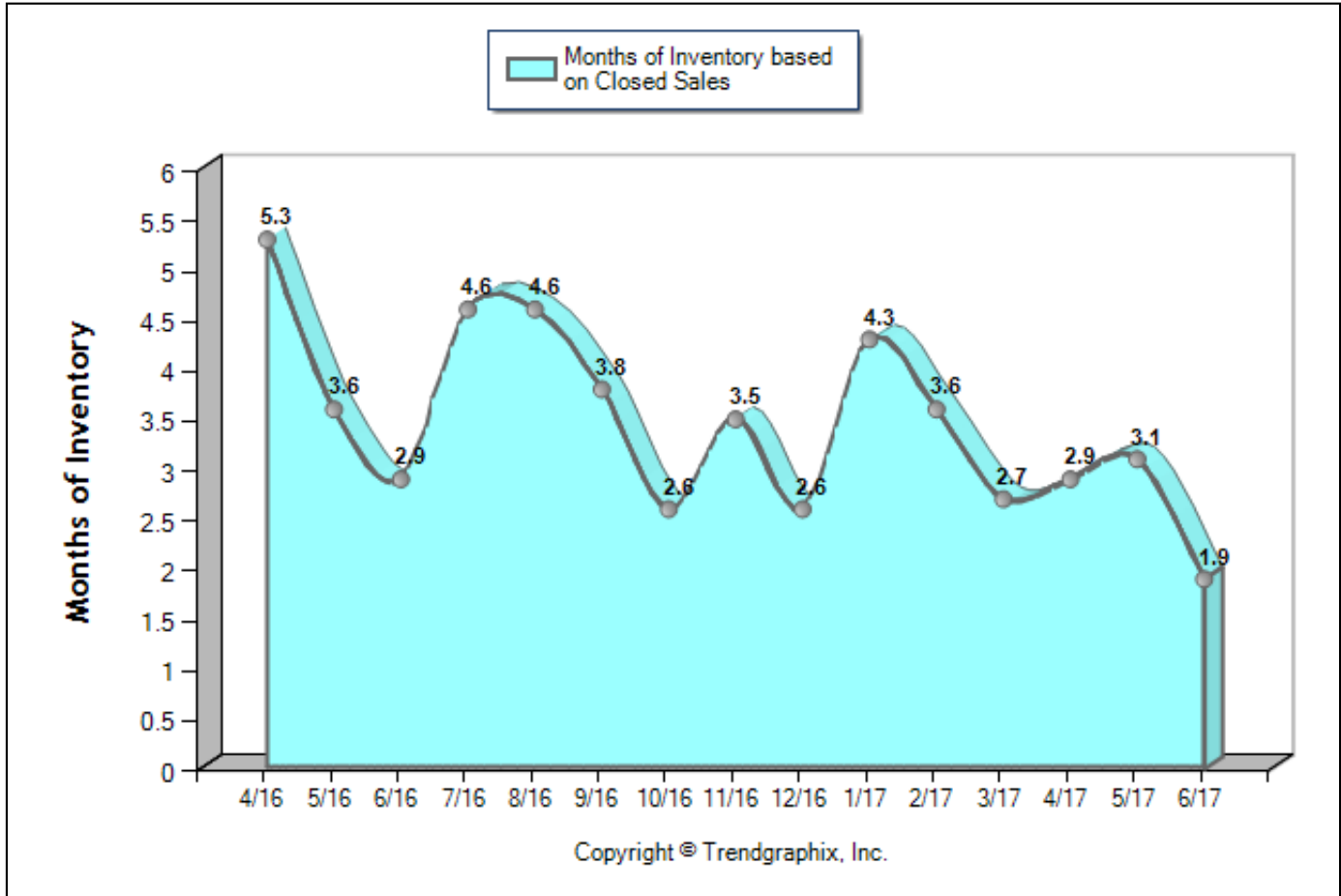
Bedrooms: 0 - No Limit

Baths: 0 - No Limit

Year Built: 0 - No Limit

Months of Inventory Based on Closed Sales (Apr. 2016 - Jun. 2017)

Prepared for you by: MLSCO



	Curnt vs. Prev Month			Curnt vs. Same Month 1 Yr Ago			Curnt vs. Same Qtr 1 Yr Ago		
	Jun. 17	May. 17	% Change	Jun. 17	Jun. 16	% Change	Apr. 17 to Jun. 17	Apr. 16 to Jun. 16	% Change
Months of Inventory (Closed Sales)	1.9	3.1	-38.4% ▼	1.9	2.9	-34% ▼	2.7	3.9	-30.6% ▼

Date	4/16	5/16	6/16	7/16	8/16	9/16	10/16	11/16	12/16	1/17	2/17	3/17	4/17	5/17	6/17
For Sale	126	121	141	148	144	139	106	91	87	85	69	77	91	100	102
New Listing	36	47	54	59	52	32	14	22	13	22	20	55	56	63	55
Sold	24	34	48	32	31	37	41	26	33	20	19	29	31	32	53
Pended	36	49	26	40	50	30	31	20	16	12	34	45	34	56	45
Months of Inventory (Closed Sales)	5.3	3.6	2.9	4.6	4.6	3.8	2.6	3.5	2.6	4.3	3.6	2.7	2.9	3.1	1.9
Months of Inventory (Pended Sales)	3.5	2.5	5.4	3.7	2.9	4.6	3.4	4.6	5.4	7.1	2	1.7	2.7	1.8	2.3
Absorption Rate (Closed Sales) %	19	28.1	34	21.6	21.5	26.6	38.7	28.6	37.9	23.5	27.5	37.7	34.1	32	52
Absorption Rate (Pended Sales) %	28.6	40.5	18.4	27	34.7	21.6	29.2	22	18.4	14.1	49.3	58.4	37.4	56	44.1
Avg. Active Price	335	349	337	336	304	334	315	291	284	274	300	296	320	345	339
Avg. Sold Price	250	198	197	210	186	176	210	216	201	186	317	213	212	220	216
Avg. Sq. Ft. Price (Sold)	134	117	130	122	126	108	122	139	118	113	172	138	139	133	143
Sold/List Diff. %	98	97	97	98	93	97	98	99	96	95	96	97	96	98	97
Sold/Orig LP Diff. %	97	93	94	97	89	96	98	95	92	93	94	94	95	98	97
Days on Market	151	157	137	145	175	116	131	113	170	131	201	179	121	92	103
Median	176	167	170	196	148	167	200	157	205	170	215	200	210	187	194

All reports are published July 2017, based on data available at the end of June 2017. All reports presented are based on data supplied by the Central Oregon MLS. Neither the Association nor its MLS guarantees or is in anyway responsible for its accuracy. Data maintained by the Association or its MLS may not reflect all real estate activities in the market. Information deemed reliable but not guaranteed.