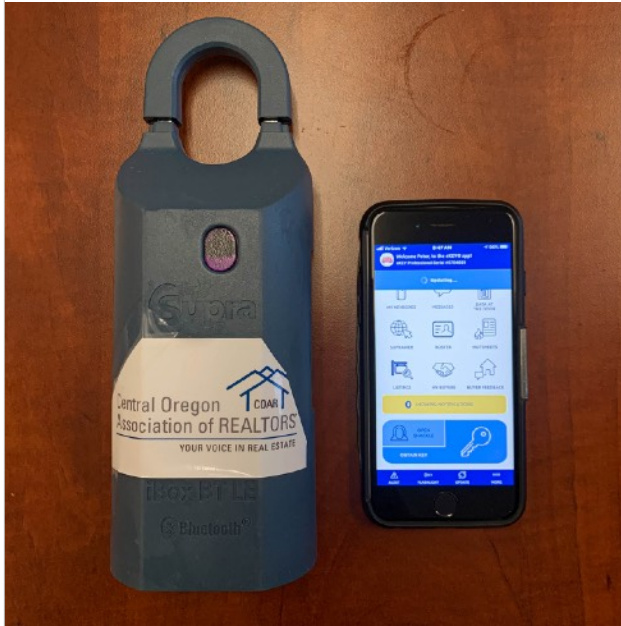
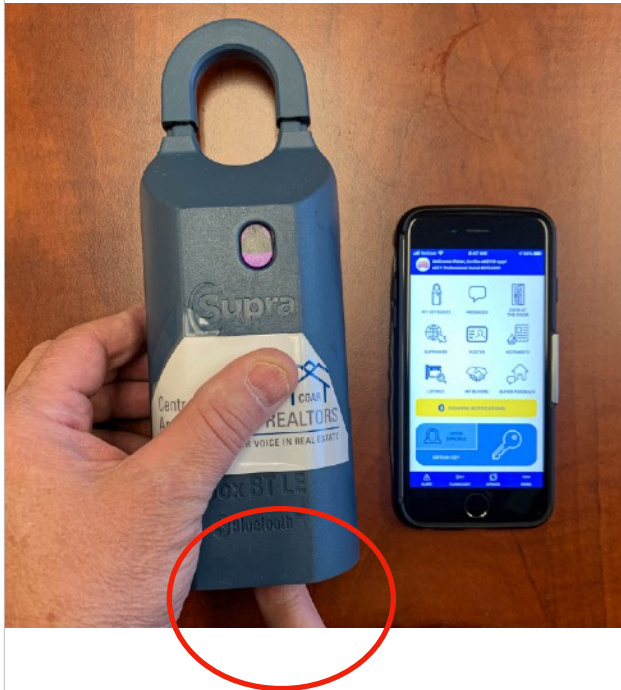


How to Open a Lockbox

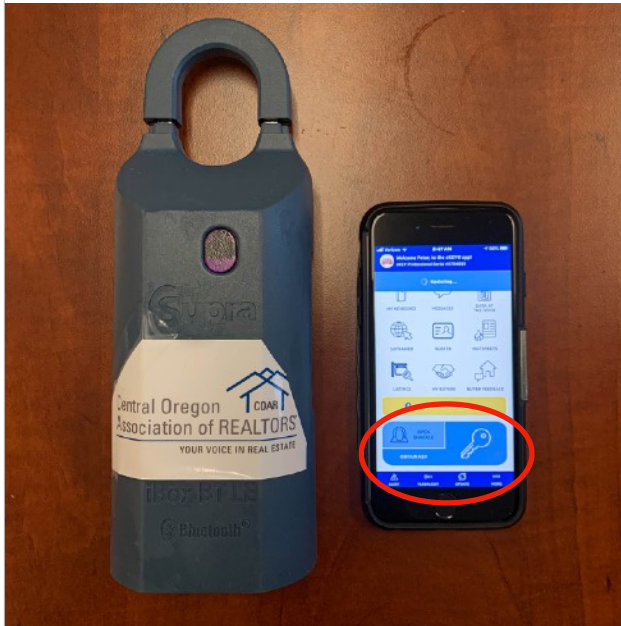


While you have cellular data or Wifi available, perform an application update before you leave for your lockbox.

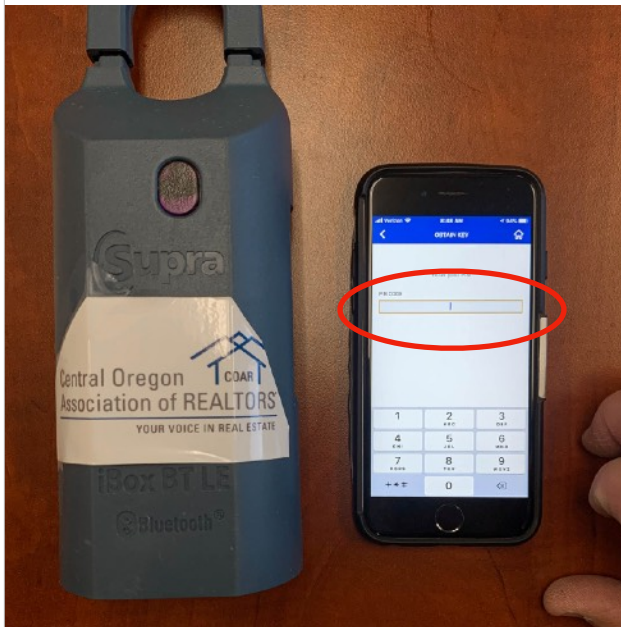
1. Open your Supra E-Key application.



2. Press up the bottom of you lockbox.
• Press hard until you hear a click or see the red light blinking.



4. Type in your pin code.



5. Let the phone and lockbox connect. It will say "Success" in green when connected.



Once they have connected...
6. Press up on the bottom again.



7. Let the key chamber drop out.



What if your lockbox doesn't open?

1. What is the error message shown? This may indicate your problem.
2. Is your application updated? Your application needs to update frequently when connected to WiFi.
3. Make sure your phone is connected to Bluetooth (check in your phone settings).
 - You must have location services enabled for this app.
 - If you are connected via bluetooth to another application.
4. Are you using the correct pin code?
5. Are you opening up the right lockbox?
6. Have you paid your monthly Supra bill?

If all fails and you have tried every option, you may need to call Supra (877) 699-6787 or re-download the application.

