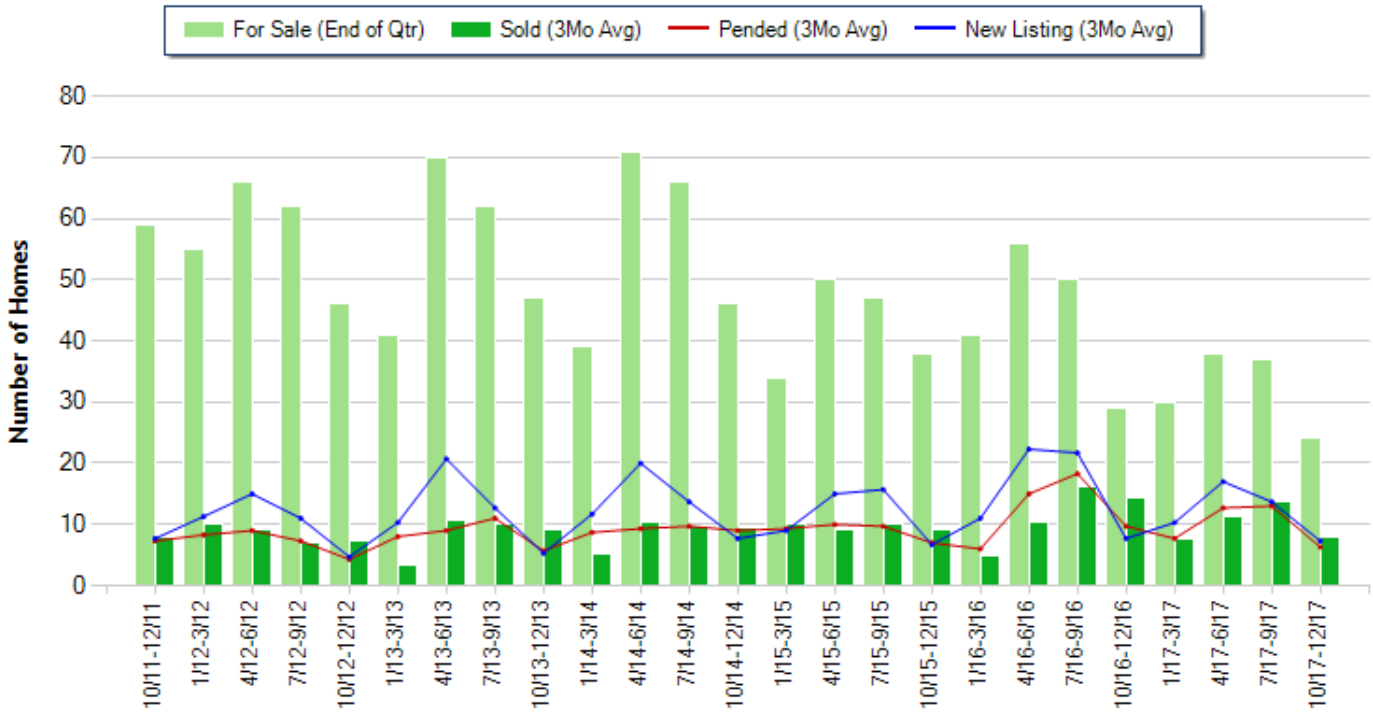


Location: Three Rivers South
Property Types: Residential - All Property Statuses - 0.00 - 0.25, 0.25 - 0.50, 0.50 - 0.75, 0.75 - 1.0
Price Range: \$0 - No Limit **SQFT Range:** 0 - No Limit **Bedrooms:** 0 - No Limit
Baths: 0 - No Limit **Year Built:** 0 - No Limit

Number of Homes For Sale vs. Sold vs. Pended vs. New Listing - Last 6 years (Quarterly)



Copyright © Trendgraphix, Inc.

	Curnt vs. Prev Qtr			Curnt vs. Same Qtr 1 Yr Ago			Curnt vs. Same Qtr 6 Yrs Ago			Curnt vs. Same 12 Months 1 Yr Ago			Curnt vs. Same 12 Months 5 Yrs Ago		
	Oct. 17 to Dec. 17	Jul. 17 to Sep. 17	% Change	Oct. 17 to Dec. 17	Oct. 16 to Dec. 16	% Change	Oct. 17 to Dec. 17	Oct. 11 to Dec. 11	% Change	Jan. 17 to Dec. 17	Jan. 16 to Dec. 16	% Change	Jan. 17 to Dec. 17	Jan. 12 to Dec. 12	% Change
For Sale (End of Qtr)	24	37	-35.1% ▼	24	29	-17.2% ▼	24	59	-59.3% ▼	24	29	-17.2% ▼	24	46	-47.8% ▼
New Listing	22	41	-46.3% ▼	22	23	-4.3% ▼	22	23	-4.3% ▼	145	188	-22.9% ▼	145	126	15.1% ▲
Sold	24	41	-41.5% ▼	24	43	-44.2% ▼	24	24	0%	122	138	-11.6% ▼	122	100	22% ▲
Pended	19	39	-51.3% ▼	19	29	-34.5% ▼	19	22	-13.6% ▼	119	147	-19% ▼	119	87	36.8% ▲

	10/11 - 12/11	1/12- 3/12	4/12- 6/12	7/12- 9/12	10/12 - 12/12	1/13- 3/13	4/13- 6/13	7/13- 9/13	10/13 - 12/13	1/14- 3/14	4/14- 6/14	7/14- 9/14	10/14 - 12/14	1/15- 3/15	4/15- 6/15	7/15- 9/15	10/15 - 12/15	1/16- 3/16	4/16- 6/16	7/16- 9/16	10/16 - 12/16	1/17- 3/17	4/17- 6/17	7/17- 9/17	10/17 - 12/17
For Sale (End of Qtr)	59	55	66	62	46	41	70	62	47	39	71	66	46	34	50	47	38	41	56	50	29	30	38	37	24
New Listing	23	34	45	33	14	31	62	38	16	35	60	41	23	45	47	45	20	33	67	65	23	31	51	41	22
New Listing (3Mo Avg)	7.7	11.3	15	11	4.7	10.3	20.7	12.7	5.3	11.7	20	13.7	7.7	9	15	15.7	6.7	11	22.3	21.7	7.7	10.3	17	13.7	7.3
Sold	24	30	27	21	22	10	32	30	27	16	31	29	28	30	27	30	27	15	31	49	43	23	34	41	24
Sold (3Mo Avg)	8	10	9	7	7.3	3.3	10.7	10	9	5.3	10.3	9.7	9.3	10	9	10	9	5	10.3	16.3	14.3	7.7	11.3	13.7	8
Pended	22	25	27	22	13	24	27	33	17	26	28	29	27	28	30	29	21	18	45	55	29	23	38	39	19
Pended (3Mo Avg)	7.3	8.3	9	7.3	4.3	8	9	11	5.7	8.7	9.3	9.7	9	9.3	10	9.7	7	6	15	18.3	9.7	7.7	12.7	13	6.3
Months of Inventory (Closed Sales)	7.4	5.5	7.3	8.9	6.3	12.4	6.5	6.2	5.2	7.4	6.9	6.8	4.9	3.4	5.6	4.7	4.2	8.2	5.4	3.1	2	3.9	3.4	2.7	3
Months of Inventory (Pended Sales)	8.1	6.6	7.3	8.5	10.7	5.1	7.8	5.6	8.2	4.5	7.6	6.8	5.1	3.7	5	4.8	5.4	6.8	3.7	2.7	3	3.9	3	2.8	3.8
Absorption Rate (Closed Sales) %	13.6	18.2	13.6	11.3	15.9	8	15.3	16.1	19.1	13.6	14.5	14.7	20.2	29.4	18	21.3	23.7	12.2	18.4	32.6	49.3	25.7	29.7	37	33.3
Absorption Rate (Pended Sales) %	12.4	15.1	13.6	11.8	9.3	19.5	12.9	17.7	12.1	22.3	13.1	14.7	19.6	27.4	20	20.6	18.4	14.6	26.8	36.6	33.4	25.7	33.4	35.1	26.3
Avg. Active Price	378	341	403	391	411	428	489	450	473	466	543	567	655	631	602	647	581	539	501	540	655	592	641	612	677
Avg. Sold Price	217	282	255	236	220	330	249	356	328	264	272	406	281	355	339	439	424	418	450	409	390	409	421	460	478
Avg. Sq. Ft. Price (Sold)	118	138	128	135	122	152	145	164	170	147	152	192	159	171	177	208	199	193	214	215	206	197	226	229	224
Sold/List Diff. %	92	95	98	98	95	94	98	97	98	98	97	96	95	95	98	98	92	99	99	98	99	96	98	99	99
Sold/Orig LP Diff. %	79	86	89	88	89	92	95	95	91	96	96	93	92	92	97	97	91	95	97	98	97	94	97	96	97
Days on Market	170	210	174	166	180	263	178	137	186	200	108	159	169	132	187	108	164	137	140	122	112	154	113	105	117
Median	144	174	150	199	205	207	231	239	206	180	235	256	235	265	250	322	331	266	298	329	290	325	346	393	407

All reports are published January 2018, based on data available at the end of December 2017. All reports presented are based on data supplied by the Central Oregon MLS. Neither the Association nor its MLS guarantees or is in anyway responsible for its accuracy. Data maintained by the Association or its MLS may not reflect all real estate activities in the market. Information deemed reliable but not guaranteed.

Location: Three Rivers South

Property Types: Residential - All Property Statuses - 1.0 - 1.5, 1.5 - 2.0, 2.0 - 2.5, 2.5 - 3.0, 3.0 - 3.5, 3.5 - 4.0, 4.0 - 4.5, 4.5 - 5.0, 5.0 - 5.5, 5.5 - 6.0, 6.0 - 6.5, 6.5 - 7.0, 7.0 - 7.5, 7.5 - 8.0, 8.0 - 8.5, 8.5 - 9.0, 9.0 - 9.5, 9.5 - 10, 10 - 20, 20 - 30, 30 - 40, 40 - 50, 50 - 60, 60 - 70, 70 - 80, 80 - 90, 90 - 100, 100+

Price Range: \$0 - No Limit

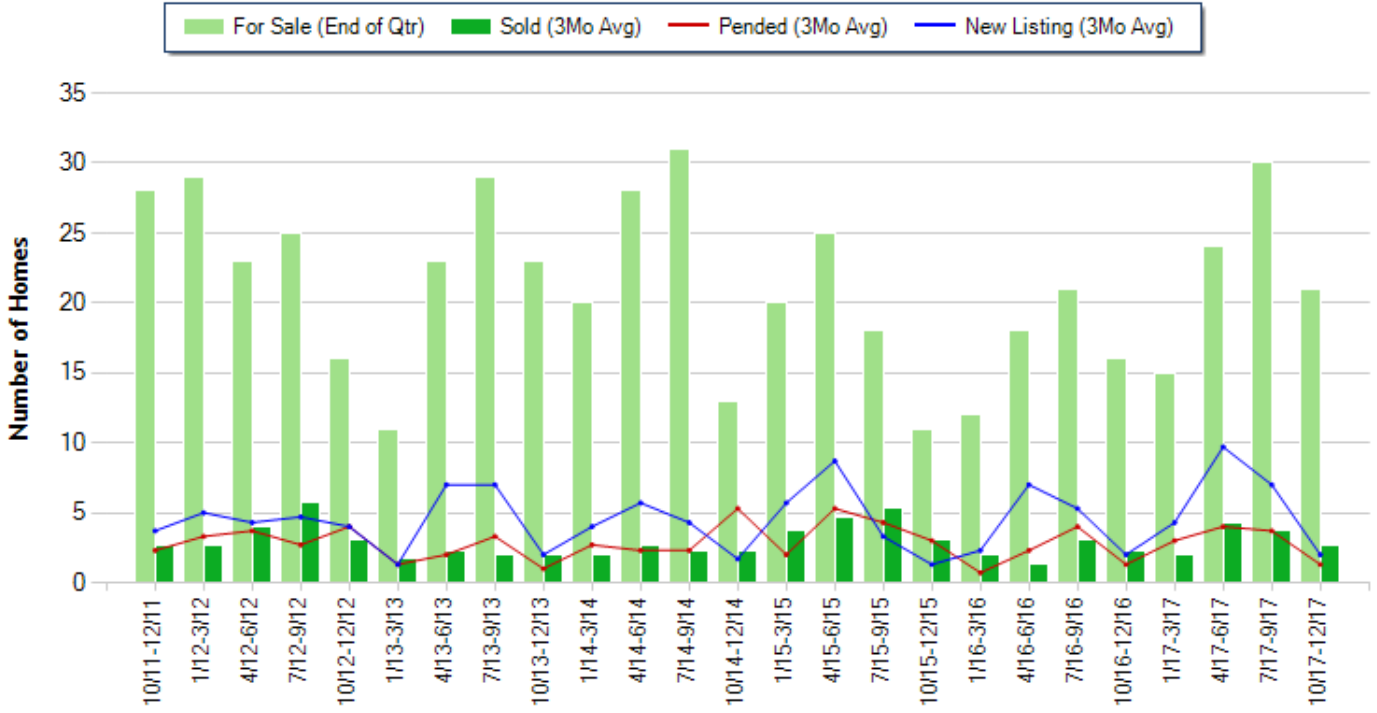
SQFT Range: 0 - No Limit

Bedrooms: 0 - No Limit

Baths: 0 - No Limit

Year Built: 0 - No Limit

Number of Homes For Sale vs. Sold vs. Pended vs. New Listing - Last 6 years (Quarterly)



Copyright © Trendgraphix, Inc.

	Curnt vs. Prev Qtr			Curnt vs. Same Qtr 1 Yr Ago			Curnt vs. Same Qtr 6 Yrs Ago			Curnt vs. Same 12 Months 1 Yr Ago			Curnt vs. Same 12 Months 5 Yrs Ago		
	Oct. 17 to Dec. 17	Jul. 17 to Sep. 17	% Change	Oct. 17 to Dec. 17	Oct. 16 to Dec. 16	% Change	Oct. 17 to Dec. 17	Oct. 11 to Dec. 11	% Change	Jan. 17 to Dec. 17	Jan. 16 to Dec. 16	% Change	Jan. 17 to Dec. 17	Jan. 12 to Dec. 12	% Change
For Sale (End of Qtr)	21	30	-30% ▼	21	16	31.3% ▲	21	28	-25% ▼	21	16	31.3% ▲	21	16	31.3% ▲
New Listing	6	21	-71.4% ▼	6	6	0%	6	11	-45.5% ▼	69	50	38% ▲	69	54	27.8% ▲
Sold	8	11	-27.3% ▼	8	7	14.3% ▲	8	8	0%	38	26	46.2% ▲	38	46	-17.4% ▼
Pended	4	11	-63.6% ▼	4	4	0%	4	7	-42.9% ▼	36	25	44% ▲	36	41	-12.2% ▼

Date	10/11 - 12/11	1/12-3/12	4/12-6/12	7/12-9/12	10/12 - 12/12	1/13-3/13	4/13-6/13	7/13-9/13	10/13 - 12/13	1/14-3/14	4/14-6/14	7/14-9/14	10/14 - 12/14	1/15-3/15	4/15-6/15	7/15-9/15	10/15 - 12/15	1/16-3/16	4/16-6/16	7/16-9/16	10/16 - 12/16	1/17-3/17	4/17-6/17	7/17-9/17	10/17 - 12/17
For Sale (End of Qtr)	28	29	23	25	16	11	23	29	23	20	28	31	13	20	25	18	11	12	18	21	16	15	24	30	21
New Listing	11	15	13	14	12	4	21	21	6	12	17	13	5	17	26	10	4	7	21	16	6	13	29	21	6
New Listing (3Mo Avg)	3.7	5	4.3	4.7	4	1.3	7	7	2	4	5.7	4.3	1.7	5.7	8.7	3.3	1.3	2.3	7	5.3	2	4.3	9.7	7	2
Sold	8	8	12	17	9	5	7	6	6	6	8	7	7	11	14	16	9	6	4	9	7	6	13	11	8
Sold (3Mo Avg)	2.7	2.7	4	5.7	3	1.7	2.3	2	2	2	2.7	2.3	2.3	3.7	4.7	5.3	3	2	1.3	3	2.3	2	4.3	3.7	2.7
Pended	7	10	11	8	12	4	6	10	3	8	7	7	16	6	16	13	9	2	7	12	4	9	12	11	4
Pended (3Mo Avg)	2.3	3.3	3.7	2.7	4	1.3	2	3.3	1	2.7	2.3	2.3	5.3	2	5.3	4.3	3	0.7	2.3	4	1.3	3	4	3.7	1.3
Months of Inventory (Closed Sales)	10.4	10.7	5.8	4.4	5.3	6.5	10	14.5	11.5	10	10.4	13.5	5.7	5.4	5.3	3.4	3.7	6	13.8	7	7	7.5	5.6	8.1	7.8
Months of Inventory (Pended Sales)	12.2	8.8	6.2	9.3	4	8.5	11.5	8.8	23	7.4	12.2	13.5	2.5	10	4.7	4.2	3.7	17.1	7.8	5.3	12.3	5	6	8.1	16.2
Absorption Rate (Closed Sales) %	9.6	9.3	17.4	22.8	18.8	15.5	10	6.9	8.7	10	9.6	7.4	17.7	18.5	18.8	29.4	27.3	16.7	7.2	14.3	14.4	13.3	17.9	12.3	12.9
Absorption Rate (Pended Sales) %	8.2	11.4	16.1	10.8	25	11.8	8.7	11.4	4.3	13.5	8.2	7.4	40.8	10	21.2	23.9	27.3	5.8	12.8	19	8.1	20	16.7	12.3	6.2
Avg. Active Price	724	679	898	809	676	828	664	953	894	931	704	707	1051	959	702	783	1016	949	945	791	769	900	949	870	948
Avg. Sold Price	177	315	224	393	452	291	358	288	355	745	207	277	284	330	460	510	386	304	506	688	309	374	413	404	583
Avg. Sq. Ft. Price (Sold)	100	149	121	164	140	123	167	138	157	206	133	143	153	145	207	211	178	163	184	210	193	196	230	215	255
Sold/List Diff. %	95	96	96	99	92	94	97	95	96	91	95	97	98	96	96	99	98	99	100	97	95	96	98	96	95
Sold/Orig LP Diff. %	86	73	91	86	83	89	94	96	87	87	93	90	94	94	96	98	94	93	94	88	90	89	96	95	91
Days on Market	163	223	164	242	146	170	140	152	214	179	113	226	130	205	102	161	163	201	253	128	148	165	103	98	226
Median	190	160	217	270	295	171	390	256	309	398	209	226	262	280	348	343	380	216	573	345	299	334	389	362	515

All reports are published January 2018, based on data available at the end of December 2017. All reports presented are based on data supplied by the Central Oregon MLS. Neither the Association nor its MLS guarantees or is in anyway responsible for its accuracy. Data maintained by the Association or its MLS may not reflect all real estate activities in the market. Information deemed reliable but not guaranteed.

Location: Three Rivers South

Property Types: Manufactured Home - All Property Statuses - 0.00 - 0.25, 0.25 - 0.50, 0.50 - 0.75, 0.75 - 1.0

Price Range: \$0 - No Limit

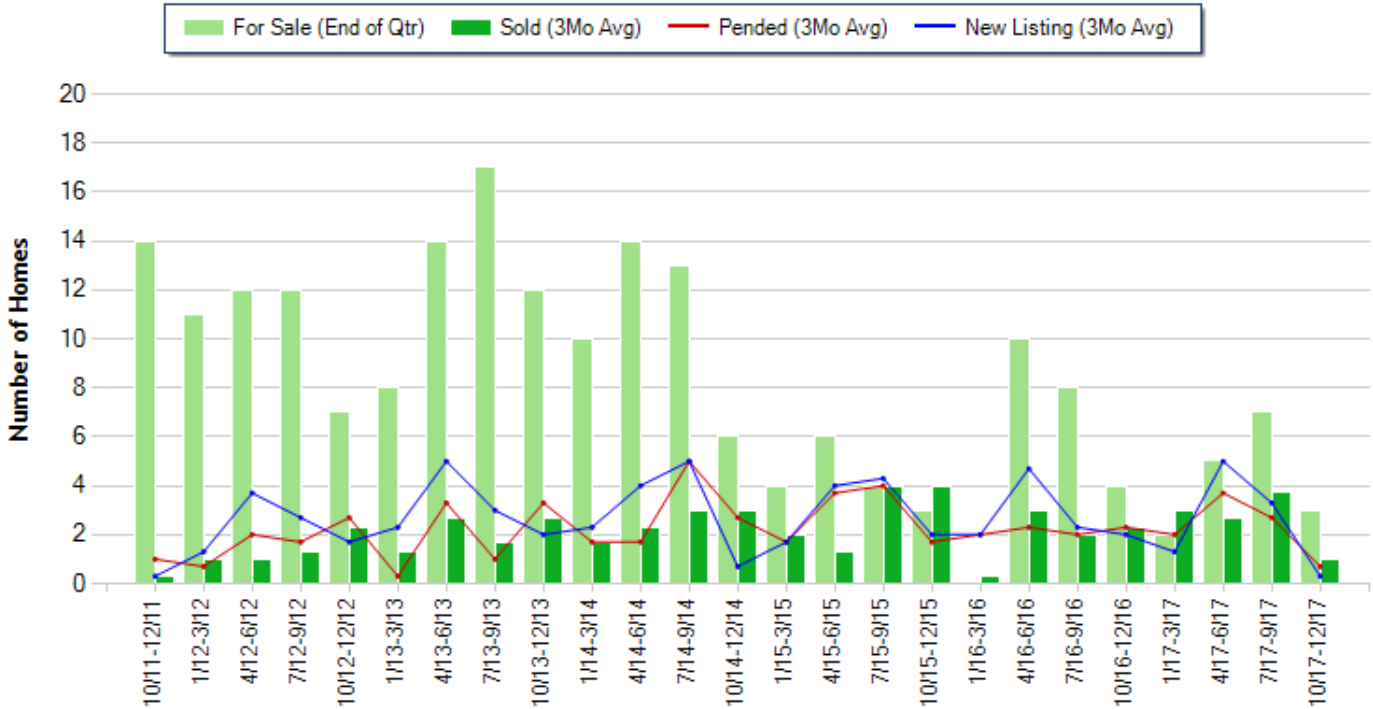
SQFT Range: 0 - No Limit

Bedrooms: 0 - No Limit

Baths: 0 - No Limit

Year Built: 0 - No Limit

Number of Homes For Sale vs. Sold vs. Pended vs. New Listing - Last 6 years (Quarterly)



Copyright © Trendgraphix, Inc.

	Curnt vs. Prev Qtr			Curnt vs. Same Qtr 1 Yr Ago			Curnt vs. Same Qtr 6 Yrs Ago			Curnt vs. Same 12 Months 1 Yr Ago			Curnt vs. Same 12 Months 5 Yrs Ago		
	Oct. 17 to Dec. 17	Jul. 17 to Sep. 17	% Change	Oct. 17 to Dec. 17	Oct. 16 to Dec. 16	% Change	Oct. 17 to Dec. 17	Oct. 11 to Dec. 11	% Change	Jan. 17 to Dec. 17	Jan. 16 to Dec. 16	% Change	Jan. 17 to Dec. 17	Jan. 12 to Dec. 12	% Change
For Sale (End of Qtr)	3	7	-57.1% ▼	3	4	-25% ▼	3	14	-78.6% ▼	3	4	-25% ▼	3	7	-57.1% ▼
New Listing	1	10	-90% ▼	1	6	-83.3% ▼	1	1	0%	30	33	-9.1% ▼	30	28	7.1% ▲
Sold	3	11	-72.7% ▼	3	7	-57.1% ▼	3	1	200% ▲	31	23	34.8% ▲	31	17	82.4% ▲
Pended	2	8	-75% ▼	2	7	-71.4% ▼	2	3	-33.3% ▼	27	26	3.8% ▲	27	21	28.6% ▲

Date	10/11 - 12/11	1/12- 3/12	4/12- 6/12	7/12- 9/12	10/12 - 12/12	1/13- 3/13	4/13- 6/13	7/13- 9/13	10/13 - 12/13	1/14- 3/14	4/14- 6/14	7/14- 9/14	10/14 - 12/14	1/15- 3/15	4/15- 6/15	7/15- 9/15	10/15 - 12/15	1/16- 3/16	4/16- 6/16	7/16- 9/16	10/16 - 12/16	1/17- 3/17	4/17- 6/17	7/17- 9/17	10/17 - 12/17
For Sale (End of Qtr)	14	11	12	12	7	8	14	17	12	10	14	13	6	4	6	4	3	0	10	8	4	2	5	7	3
New Listing	1	4	11	8	5	7	15	9	6	7	12	15	2	5	12	13	6	6	14	7	6	4	15	10	1
New Listing (3Mo Avg)	0.3	1.3	3.7	2.7	1.7	2.3	5	3	2	2.3	4	5	0.7	1.7	4	4.3	2	2	4.7	2.3	2	1.3	5	3.3	0.3
Sold	1	3	3	4	7	4	8	5	8	5	7	9	9	6	4	12	12	1	9	6	7	9	8	11	3
Sold (3Mo Avg)	0.3	1	1	1.3	2.3	1.3	2.7	1.7	2.7	1.7	2.3	3	3	2	1.3	4	4	0.3	3	2	2.3	3	2.7	3.7	1
Pended	3	2	6	5	8	1	10	3	10	5	5	15	8	5	11	12	5	6	7	6	7	6	11	8	2
Pended (3Mo Avg)	1	0.7	2	1.7	2.7	0.3	3.3	1	3.3	1.7	1.7	5	2.7	1.7	3.7	4	1.7	2	2.3	2	2.3	2	3.7	2.7	0.7
Months of Inventory (Closed Sales)	46.7	11	12	9.2	3	6.2	5.2	10	4.4	5.9	6.1	4.3	2	2	4.6	1	0.8	0	3.3	4	1.7	0.7	1.9	1.9	3
Months of Inventory (Pended Sales)	14	15.7	6	7.1	2.6	26.7	4.2	17	3.6	5.9	8.2	2.6	2.2	2.4	1.6	1	1.8	0	4.3	4	1.7	1	1.4	2.6	4.3
Absorption Rate (Closed Sales) %	2.1	9.1	8.3	10.8	32.9	16.3	19.3	10	22.5	17	16.4	23.1	50	50	21.7	100	133.3	1	30	25	57.5	150	54	52.9	33.3
Absorption Rate (Pended Sales) %	7.1	6.4	16.7	14.2	38.6	3.8	23.6	5.9	27.5	17	12.1	38.5	45	42.5	61.7	100	56.7	6	23	25	57.5	100	74	38.6	23.3
Avg. Active Price	175	186	194	179	158	157	181	144	131	149	132	150	161	215	210	151	169	0	210	209	185	213	173	242	274
Avg. Sold Price	40	72	73	105	101	111	128	211	121	75	136	101	146	140	150	177	140	130	140	177	191	183	199	221	174
Avg. Sq. Ft. Price (Sold)	25	55	45	58	78	65	94	139	84	75	88	86	91	101	99	116	105	100	107	114	137	135	135	161	132
Sold/List Diff. %	93	96	102	95	93	92	93	95	95	94	89	97	94	90	100	99	99	99	130	99	98	99	101	95	93
Sold/Orig LP Diff. %	57	88	97	91	89	79	92	94	85	91	85	96	88	84	97	98	97	130	98	102	97	96	105	93	88
Days on Market	230	115	66	201	360	139	81	140	132	115	207	81	112	199	115	117	70	53	84	275	116	126	84	76	70
Median	40	66	83	124	70	67	122	195	93	75	145	110	135	146	149	152	142	130	150	187	185	201	205	225	145

All reports are published January 2018, based on data available at the end of December 2017. All reports presented are based on data supplied by the Central Oregon MLS. Neither the Association nor its MLS guarantees or is in anyway responsible for its accuracy. Data maintained by the Association or its MLS may not reflect all real estate activities in the market. Information deemed reliable but not guaranteed.

Location: Three Rivers South

Property Types: Manufactured Home - All Property Statuses - 1.0 - 1.5, 1.5 - 2.0, 2.0 - 2.5, 2.5 - 3.0, 3.0 - 3.5, 3.5 - 4.0, 4.0 - 4.5, 4.5 - 5.0, 5.0 - 5.5, 5.5 - 6.0, 6.0 - 6.5, 6.5 - 7.0, 7.0 - 7.5, 7.5 - 8.0, 8.0 - 8.5, 8.5 - 9.0, 9.0 - 9.5, 9.5 - 10, 10 - 20, 20 - 30, 30 - 40, 40 - 50, 50 - 60, 60 - 70, 70 - 80, 80 - 90, 90 - 100, 100+

Price Range: \$0 - No Limit

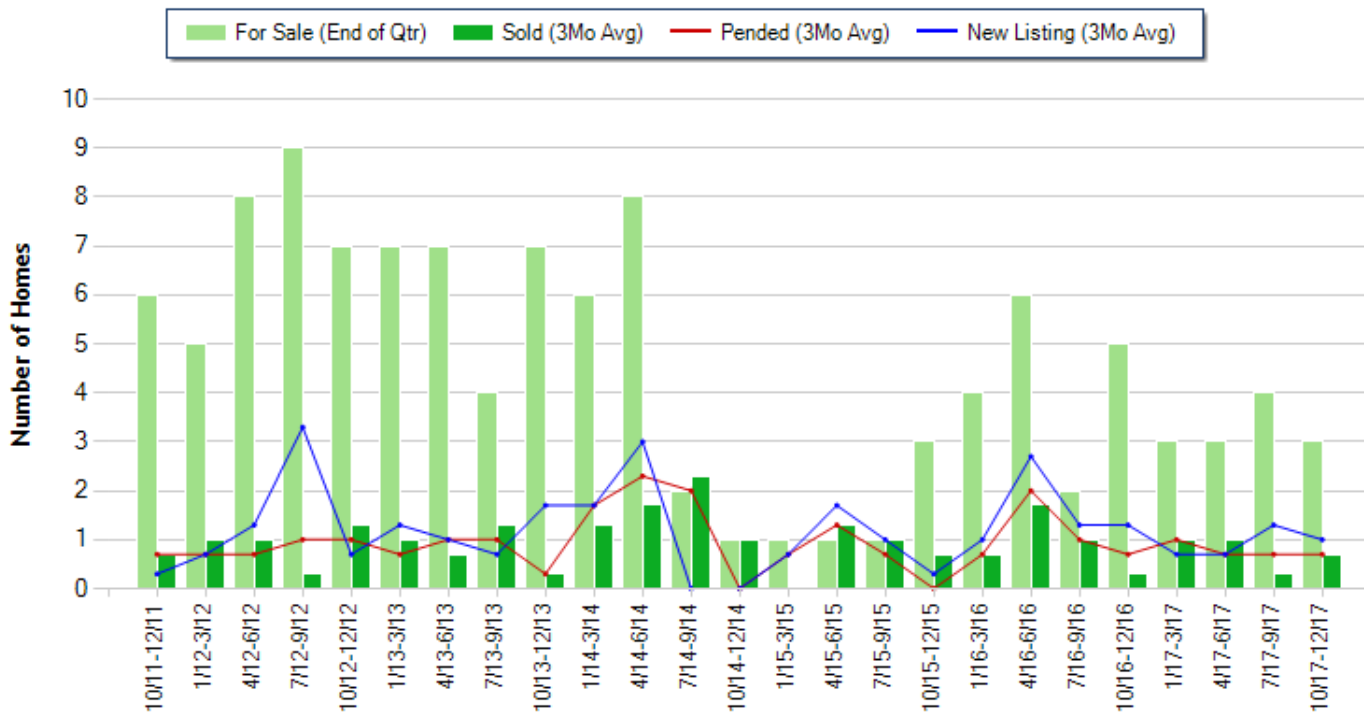
SQFT Range: 0 - No Limit

Bedrooms: 0 - No Limit

Baths: 0 - No Limit

Year Built: 0 - No Limit

Number of Homes For Sale vs. Sold vs. Pended vs. New Listing - Last 6 years (Quarterly)



Copyright © Trendgraphix, Inc.

	Curnt vs. Prev Qtr			Curnt vs. Same Qtr 1 Yr Ago			Curnt vs. Same Qtr 6 Yrs Ago			Curnt vs. Same 12 Months 1 Yr Ago			Curnt vs. Same 12 Months 5 Yrs Ago		
	Oct. 17 to Dec. 17	Jul. 17 to Sep. 17	% Change	Oct. 17 to Dec. 17	Oct. 16 to Dec. 16	% Change	Oct. 17 to Dec. 17	Oct. 11 to Dec. 11	% Change	Jan. 17 to Dec. 17	Jan. 16 to Dec. 16	% Change	Jan. 17 to Dec. 17	Jan. 12 to Dec. 12	% Change
For Sale (End of Qtr)	3	4	-25% ▼	3	5	-40% ▼	3	6	-50% ▼	3	5	-40% ▼	3	7	-57.1% ▼
New Listing	3	4	-25% ▼	3	4	-25% ▼	3	1	200% ▲	11	19	-42.1% ▼	11	18	-38.9% ▼
Sold	2	1	100% ▲	2	1	100% ▲	2	2	0%	9	11	-18.2% ▼	9	11	-18.2% ▼
Pended	2	2	0%	2	2	0%	2	2	0%	9	13	-30.8% ▼	9	10	-10% ▼

Date	10/11 - 12/11	1/12-3/12	4/12-6/12	7/12-9/12	10/12 - 12/12	1/13-3/13	4/13-6/13	7/13-9/13	10/13 - 12/13	1/14-3/14	4/14-6/14	7/14-9/14	10/14 - 12/14	1/15-3/15	4/15-6/15	7/15-9/15	10/15 - 12/15	1/16-3/16	4/16-6/16	7/16-9/16	10/16 - 12/16	1/17-3/17	4/17-6/17	7/17-9/17	10/17 - 12/17
For Sale (End of Qtr)	6	5	8	9	7	7	7	4	7	6	8	2	1	1	1	1	3	4	6	2	5	3	3	4	3
New Listing	1	2	4	10	2	4	3	2	5	5	9	0	0	2	5	3	1	3	8	4	4	2	2	4	3
New Listing (3Mo Avg)	0.3	0.7	1.3	3.3	0.7	1.3	1	0.7	1.7	1.7	3	0	0	0.7	1.7	1	0.3	1	2.7	1.3	1.3	0.7	0.7	1.3	1
Sold	2	3	3	1	4	3	2	4	1	4	5	7	3	0	4	3	2	2	5	3	1	3	3	1	2
Sold (3Mo Avg)	0.7	1	1	0.3	1.3	1	0.7	1.3	0.3	1.3	1.7	2.3	1	0	1.3	1	0.7	0.7	1.7	1	0.3	1	1	0.3	0.7
Pended	2	2	2	3	3	2	3	3	1	5	7	6	0	2	4	2	0	2	6	3	2	3	2	2	2
Pended (3Mo Avg)	0.7	0.7	0.7	1	1	0.7	1	1	0.3	1.7	2.3	2	0	0.7	1.3	0.7	0	0.7	2	1	0.7	1	0.7	0.7	0.7
Months of Inventory (Closed Sales)	8.6	5	8	30	5.4	7	10	3.1	23.3	4.6	4.7	0.9	1	1	0.8	1	4.3	5.7	3.5	2	16.7	3	3	13.3	4.3
Months of Inventory (Pended Sales)	8.6	7.1	11.4	9	7	10	7	4	23.3	3.5	3.5	1	1	1.4	0.8	1.4	3	5.7	3	2	7.1	3	4.3	5.7	4.3
Absorption Rate (Closed Sales) %	11.7	20	12.5	3.3	18.6	14.3	10	32.5	4.3	21.7	21.3	115	100	0	130	100	23.3	17.5	28.3	50	6	33.3	33.3	7.5	23.3
Absorption Rate (Pended Sales) %	11.7	14	8.8	11.1	14.3	10	14.3	25	4.3	28.3	28.8	100	0	70	130	70	0	17.5	33.3	50	14	33.3	23.3	17.5	23.3
Avg. Active Price	239	293	232	256	230	288	285	287	175	257	149	147	210	0	175	350	228	230	286	219	218	225	241	253	273
Avg. Sold Price	134	53	59	145	93	68	165	122	165	87	115	214	184	0	132	232	104	89	184	166	210	163	267	285	224
Avg. Sq. Ft. Price (Sold)	85	40	47	96	63	45	131	68	69	69	70	160	107	0	122	132	70	75	103	143	139	104	190	219	132
Sold/List Diff. %	89	95	98	97	91	84	95	99	100	94	97	93	95	0	100	93	95	111	104	94	100	99	102	95	100
Sold/Orig LP Diff. %	84	88	99	97	83	62	89	104	100	93	98	89	90	0	97	93	73	111	104	94	100	92	101	95	91
Days on Market	147	296	59	125	265	367	218	177	45	76	193	177	142	0	241	58	486	146	103	55	98	131	93	74	184
Median	134	50	57	145	90	62	165	116	165	83	105	141	185	0	122	250	104	89	165	180	210	175	271	285	224

All reports are published January 2018, based on data available at the end of December 2017. All reports presented are based on data supplied by the Central Oregon MLS. Neither the Association nor its MLS guarantees or is in anyway responsible for its accuracy. Data maintained by the Association or its MLS may not reflect all real estate activities in the market. Information deemed reliable but not guaranteed.

Location: Three Rivers South

Property Types: All Land Prop - All Property Statuses - All Lot Sizes

Price Range: \$0 - No Limit

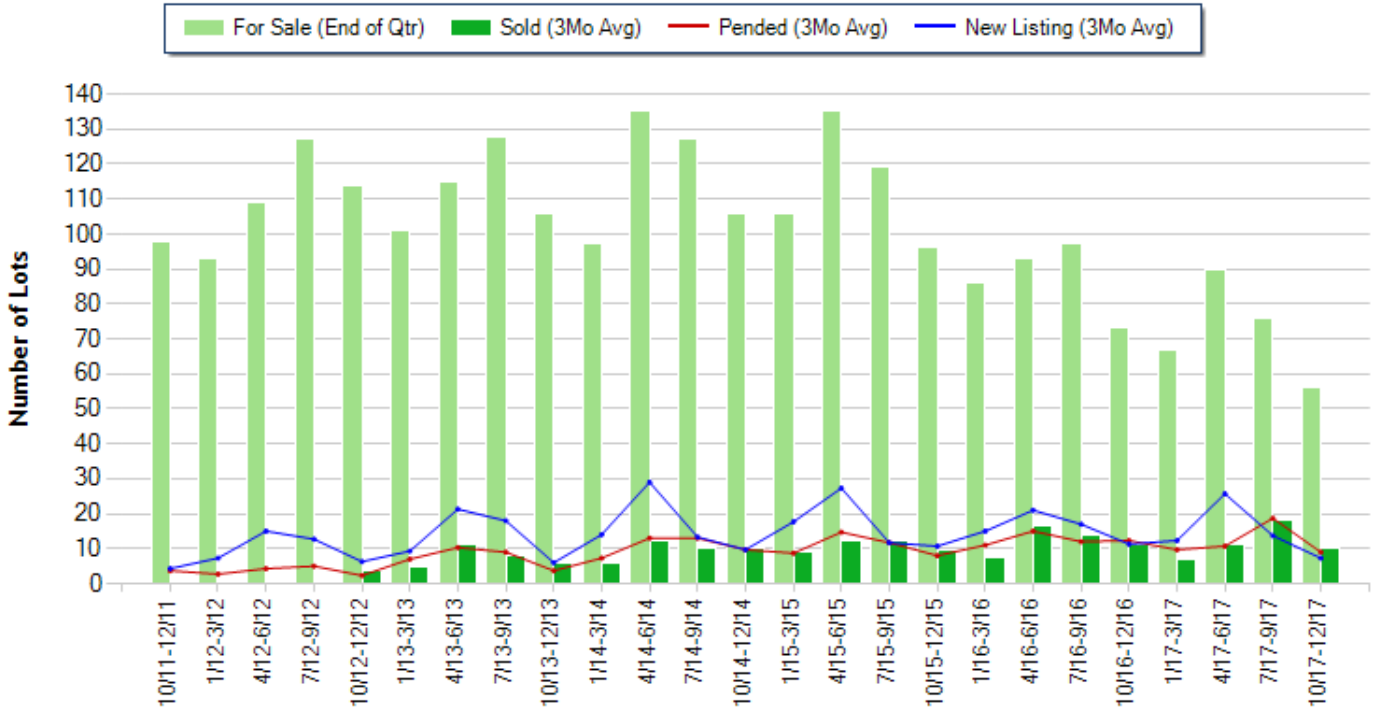
SQFT Range: 0 - No Limit

Bedrooms: 0 - No Limit

Baths: 0 - No Limit

Year Built: 0 - No Limit

Number of Homes For Sale vs. Sold vs. Pended vs. New Listing - Last 6 years (Quarterly)



Copyright © Trendgraphix, Inc.

	Curnt vs. Prev Qtr			Curnt vs. Same Qtr 1 Yr Ago			Curnt vs. Same Qtr 6 Yrs Ago			Curnt vs. Same 12 Months 1 Yr Ago			Curnt vs. Same 12 Months 5 Yrs Ago		
	Oct. 17 to Dec. 17	Jul. 17 to Sep. 17	% Change	Oct. 17 to Dec. 17	Oct. 16 to Dec. 16	% Change	Oct. 17 to Dec. 17	Oct. 11 to Dec. 11	% Change	Jan. 17 to Dec. 17	Jan. 16 to Dec. 16	% Change	Jan. 17 to Dec. 17	Jan. 12 to Dec. 12	% Change
For Sale (End of Qtr)	56	76	-26.3% ▼	56	73	-23.3% ▼	56	98	-42.9% ▼	56	73	-23.3% ▼	56	114	-50.9% ▼
New Listing	22	41	-46.3% ▼	22	34	-35.3% ▼	22	13	69.2% ▲	177	193	-8.3% ▼	177	124	42.7% ▲
Sold	30	55	-45.5% ▼	30	33	-9.1% ▼	30	0	N/A	138	147	-6.1% ▼	138	11	1,154.5% ▲
Pended	27	56	-51.8% ▼	27	37	-27% ▼	27	11	145.5% ▲	144	151	-4.6% ▼	144	43	234.9% ▲

Date	10/11 - 12/11	1/12- 3/12	4/12- 6/12	7/12- 9/12	10/12 - 12/12	1/13- 3/13	4/13- 6/13	7/13- 9/13	10/13 - 12/13	1/14- 3/14	4/14- 6/14	7/14- 9/14	10/14 - 12/14	1/15- 3/15	4/15- 6/15	7/15- 9/15	10/15 - 12/15	1/16- 3/16	4/16- 6/16	7/16- 9/16	10/16 - 12/16	1/17- 3/17	4/17- 6/17	7/17- 9/17	10/17 - 12/17
For Sale (End of Qtr)	98	93	109	127	114	101	115	128	106	97	135	127	106	106	135	119	96	86	93	97	73	67	90	76	56
New Listing	13	22	45	38	19	28	64	54	18	42	87	40	29	53	82	35	32	45	63	51	34	37	77	41	22
New Listing (3Mo Avg)	4.3	7.3	15	12.7	6.3	9.3	21.3	18	6	14	29	13.3	9.7	17.7	27.3	11.7	10.7	15	21	17	11.3	12.3	25.7	13.7	7.3
Sold	0	0	0	0	11	14	33	24	18	18	36	31	31	27	37	37	29	23	50	41	33	20	33	55	30
Sold (3Mo Avg)	0	0	0	0	3.7	4.7	11	8	6	6	12	10.3	10.3	9	12.3	12.3	9.7	7.7	16.7	13.7	11	6.7	11	18.3	10
Pended	11	8	13	15	7	21	31	27	11	22	39	39	29	26	44	35	24	33	45	36	37	29	32	56	27
Pended (3Mo Avg)	3.7	2.7	4.3	5	2.3	7	10.3	9	3.7	7.3	13	13	9.7	8.7	14.7	11.7	8	11	15	12	12.3	9.7	10.7	18.7	9
Months of Inventory (Closed Sales)	98	93	109	127	30.8	21.5	10.5	16	17.7	16.2	11.3	12.3	10.3	11.8	11	9.7	9.9	11.2	5.6	7.1	6.6	10	8.2	4.2	5.6
Months of Inventory (Pended Sales)	26.5	34.4	25.3	25.4	49.6	14.4	11.2	14.2	28.6	13.3	10.4	9.8	10.9	12.2	9.2	10.2	12	7.8	6.2	8.1	5.9	6.9	8.4	4.1	6.2
Absorption Rate (Closed Sales) %	0	0	0	0	3.2	4.7	9.6	6.3	5.7	6.2	8.9	8.1	9.7	8.5	9.1	10.3	10.1	9	18	14.1	15.1	10	12.2	24.1	17.9
Absorption Rate (Pended Sales) %	3.8	2.9	3.9	3.9	2	6.9	9	7	3.5	7.5	9.6	10.2	9.2	8.2	10.9	9.8	8.3	12.8	16.1	12.4	16.8	14.5	11.9	24.6	16.1
Avg. Active Price	0	0	0	0	135	141	140	132	143	130	139	143	143	163	161	163	142	134	176	148	163	157	155	139	158
Avg. Sold Price	0	0	0	0	89	91	75	81	74	85	73	60	98	79	56	95	76	112	75	97	98	152	73	98	111
Avg. Sq. Ft. Price (Sold)	0	0	0	0	0	0	0	0	0	0	0	0	0	0	0	0	0	0	0	0	0	0	0	0	0
Sold/List Diff. %	0	0	0	0	90	86	91	91	86	93	96	92	90	94	92	92	94	95	95	94	93	96	93	94	95
Sold/Orig LP Diff. %	0	0	0	0	79	75	83	86	80	90	92	85	87	91	89	88	91	87	92	90	88	87	92	90	92
Days on Market	0	0	0	0	246	237	184	244	247	221	110	133	149	138	158	184	226	217	176	136	172	259	128	114	224
Median	0	0	0	0	104	105	40	57	48	54	35	36	75	47	43	67	55	97	67	70	75	101	66	75	88

All reports are published January 2018, based on data available at the end of December 2017. All reports presented are based on data supplied by the Central Oregon MLS. Neither the Association nor its MLS guarantees or is in anyway responsible for its accuracy. Data maintained by the Association or its MLS may not reflect all real estate activities in the market. Information deemed reliable but not guaranteed.

Location: Three Rivers South

Property Types: Condo, Townhome - All Property Statuses - All Lot Sizes

Price Range: \$0 - No Limit

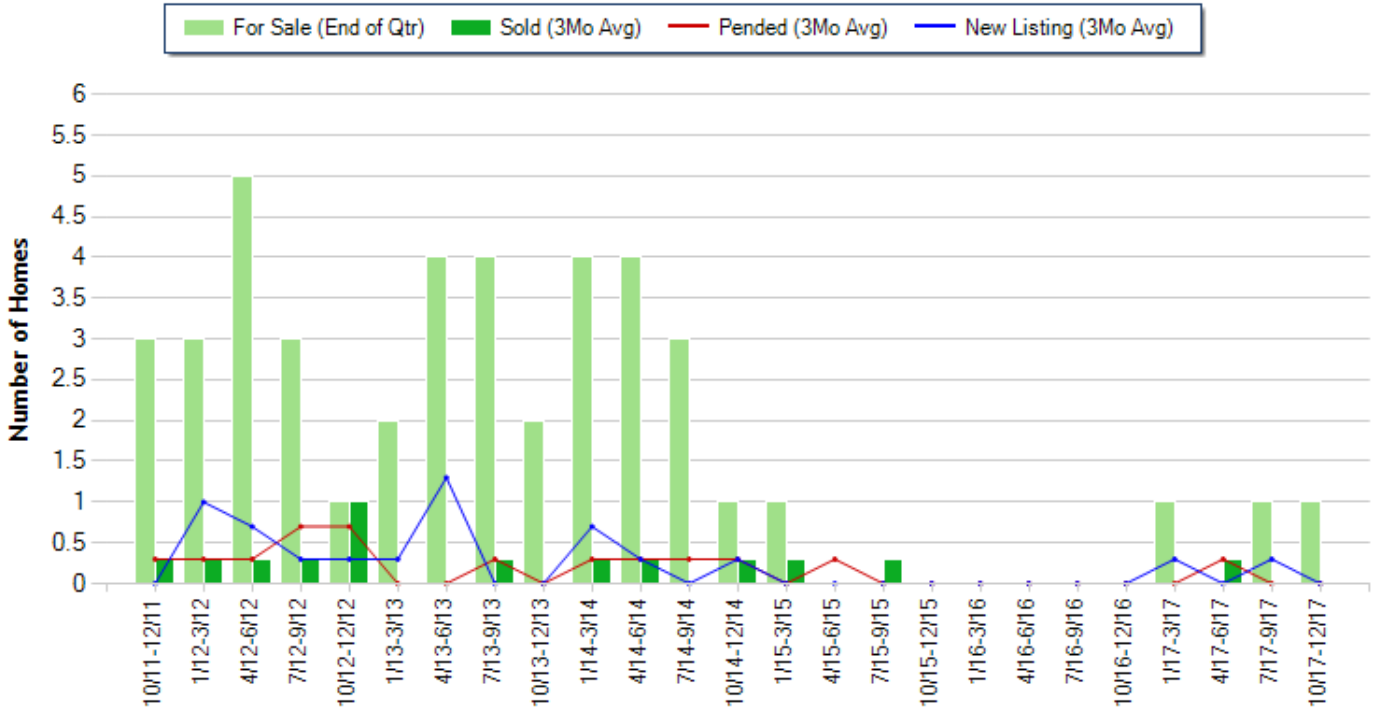
SQFT Range: 0 - No Limit

Bedrooms: 0 - No Limit

Baths: 0 - No Limit

Year Built: 0 - No Limit

Number of Homes For Sale vs. Sold vs. Pended vs. New Listing - Last 6 years (Quarterly)



Copyright © Trendgraphix, Inc.

	Curnt vs. Prev Qtr			Curnt vs. Same Qtr 1 Yr Ago			Curnt vs. Same Qtr 6 Yrs Ago			Curnt vs. Same 12 Months 1 Yr Ago			Curnt vs. Same 12 Months 5 Yrs Ago		
	Oct. 17 to Dec. 17	Jul. 17 to Sep. 17	% Change	Oct. 17 to Dec. 17	Oct. 16 to Dec. 16	% Change	Oct. 17 to Dec. 17	Oct. 11 to Dec. 11	% Change	Jan. 17 to Dec. 17	Jan. 16 to Dec. 16	% Change	Jan. 17 to Dec. 17	Jan. 12 to Dec. 12	% Change
For Sale (End of Qtr)	1	1	0%	1	0	N/A	1	3	-66.7% ▼	1	0	N/A	1	1	0%
New Listing	0	1	-100% ▼	0	0	N/A	0	0	N/A	2	0	N/A	2	7	-71.4% ▼
Sold	0	0	N/A	0	0	N/A	0	1	-100% ▼	1	0	N/A	1	6	-83.3% ▼
Pended	0	0	N/A	0	0	N/A	0	1	-100% ▼	1	0	N/A	1	6	-83.3% ▼

Date	10/11 - 12/11	1/12 - 3/12	4/12 - 6/12	7/12 - 9/12	10/12 - 12/12	1/13 - 3/13	4/13 - 6/13	7/13 - 9/13	10/13 - 12/13	1/14 - 3/14	4/14 - 6/14	7/14 - 9/14	10/14 - 12/14	1/15 - 3/15	4/15 - 6/15	7/15 - 9/15	10/15 - 12/15	1/16 - 3/16	4/16 - 6/16	7/16 - 9/16	10/16 - 12/16	1/17 - 3/17	4/17 - 6/17	7/17 - 9/17	10/17 - 12/17
For Sale (End of Qtr)	3	3	5	3	1	2	4	4	2	4	4	3	1	1	0	0	0	0	0	0	0	1	0	1	1
New Listing	0	3	2	1	1	1	4	0	0	2	1	0	1	0	0	0	0	0	0	0	0	1	0	1	0
New Listing (3Mo Avg)	0	1	0.7	0.3	0.3	0.3	1.3	0	0	0.7	0.3	0	0.3	0	0	0	0	0	0	0	0	0.3	0	0.3	0
Sold	1	1	1	1	3	0	0	1	0	1	1	0	1	1	0	1	0	0	0	0	0	0	1	0	0
Sold (3Mo Avg)	0.3	0.3	0.3	0.3	1	0	0	0.3	0	0.3	0.3	0	0.3	0.3	0	0.3	0	0	0	0	0	0	0.3	0	0
Pended	1	1	1	2	2	0	0	1	0	1	1	1	1	0	1	0	0	0	0	0	0	0	1	0	0
Pended (3Mo Avg)	0.3	0.3	0.3	0.7	0.7	0	0	0.3	0	0.3	0.3	0.3	0.3	0	0.3	0	0	0	0	0	0	0	0.3	0	0
Months of Inventory (Closed Sales)	10	10	16.7	10	1	2	4	13.3	2	13.3	13.3	3	3.3	3.3	0	0	0	0	0	0	0	1	0	1	1
Months of Inventory (Pended Sales)	10	10	16.7	4.3	1.4	2	4	13.3	2	13.3	13.3	10	3.3	1	0	0	0	0	0	0	0	1	0	1	1
Absorption Rate (Closed Sales) %	10	10	6	10	100	0	0	7.5	0	7.5	7.5	0	30	30	0	1	0	0	0	0	0	0	1	0	0
Absorption Rate (Pended Sales) %	10	10	6	23.3	70	0	0	7.5	0	7.5	7.5	10	30	0	1	0	0	0	0	0	0	0	1	0	0
Avg. Active Price	492	541	447	411	629	0	0	285	0	507	627	0	600	590	0	0	0	0	0	0	0	0	0	0	0
Avg. Sold Price	170	465	250	499	377	0	0	620	0	159	140	0	500	520	0	520	0	0	0	0	0	0	235	0	0
Avg. Sq. Ft. Price (Sold)	136	201	170	216	196	0	0	296	0	141	149	0	216	232	0	216	0	0	0	0	0	0	168	0	0
Sold/List Diff. %	85	97	85	100	96	0	0	97	0	94	97	0	87	87	0	98	0	0	0	0	0	0	100	0	0
Sold/Orig LP Diff. %	85	80	84	91	88	0	0	91	0	94	97	0	83	85	0	87	0	0	0	0	0	0	107	0	0
Days on Market	155	174	105	140	124	0	0	734	0	49	328	0	578	574	0	243	0	0	0	0	0	0	128	0	0
Median	170	465	250	499	362	0	0	620	0	160	140	0	500	520	0	520	0	0	0	0	0	0	235	0	0

All reports are published January 2018, based on data available at the end of December 2017. All reports presented are based on data supplied by the Central Oregon MLS. Neither the Association nor its MLS guarantees or is in anyway responsible for its accuracy. Data maintained by the Association or its MLS may not reflect all real estate activities in the market. Information deemed reliable but not guaranteed.