

Location: Deschutes County

Property Types: All Residential Prop - All Property Statuses - All Lot Sizes

Price Range: \$0 - No Limit

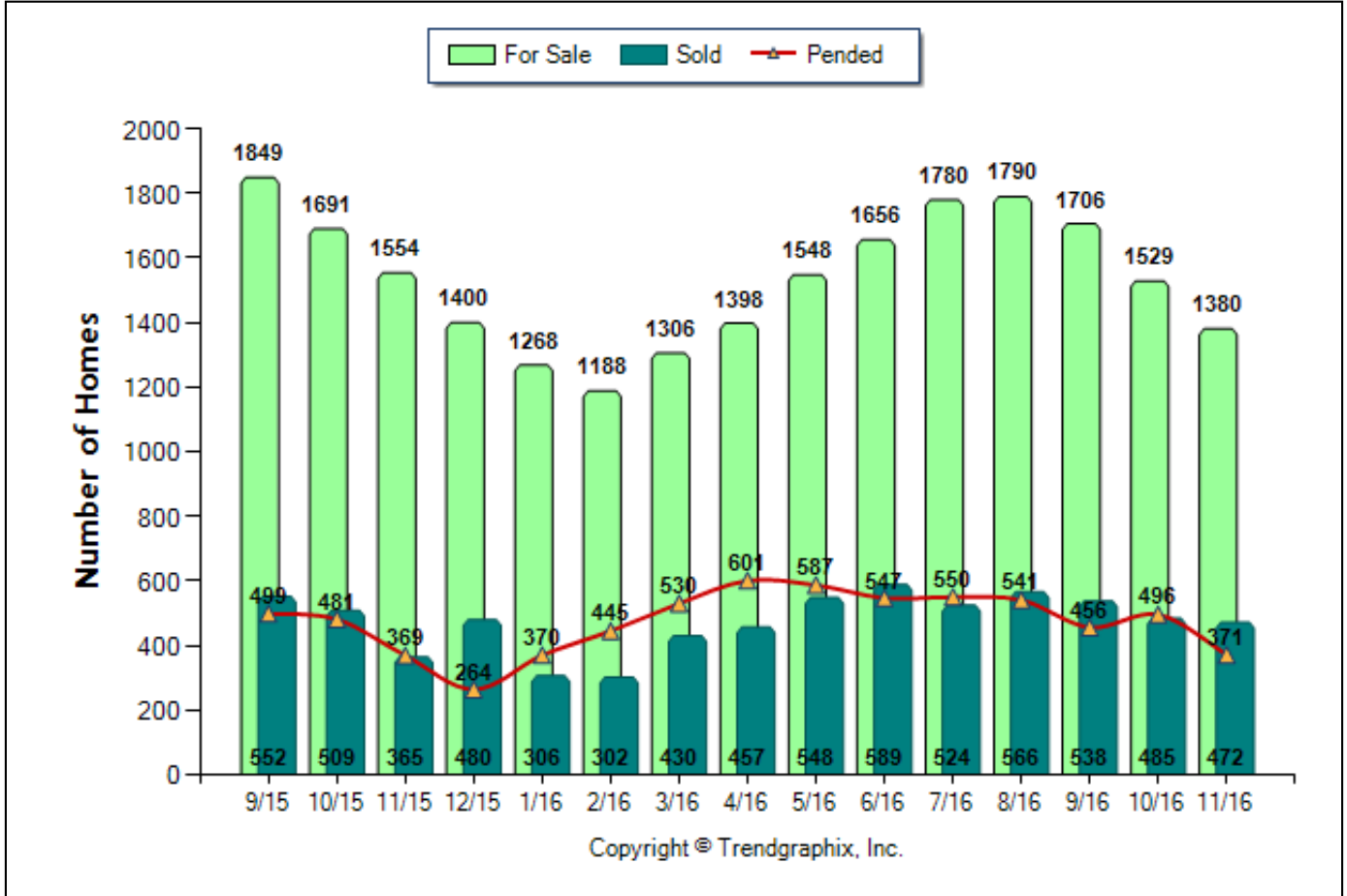
SQFT Range: 0 - No Limit

Bedrooms: 0 - No Limit

Baths: 0 - No Limit

Year Built: 0 - No Limit

Number of Homes For Sale vs. Sold vs. Pended (Sep. 2015 - Nov. 2016)



	Curnt vs. Prev Month			Curnt vs. Same Month 1 Yr Ago			Curnt vs. Same Qtr 1 Yr Ago		
	Nov. 16	Oct. 16	% Change	Nov. 16	Nov. 15	% Change	Sep. 16 to Nov. 16	Sep. 15 to Nov. 15	% Change
For Sale	1380	1529	-9.7% ▼	1380	1554	-11.2% ▼	4615	5094	-9.4% ▼
Sold	472	485	-2.7% ▼	472	365	29.3% ▲	1495	1426	4.8% ▲
Pended	371	496	-25.2% ▼	371	369	0.5% ▲	1323	1349	-1.9% ▼

Date	9/15	10/15	11/15	12/15	1/16	2/16	3/16	4/16	5/16	6/16	7/16	8/16	9/16	10/16	11/16
For Sale	1849	1691	1554	1400	1268	1188	1306	1398	1548	1656	1780	1790	1706	1529	1380
New Listing	547	471	361	286	403	452	709	765	781	797	712	680	519	451	343
Sold	552	509	365	480	306	302	430	457	548	589	524	566	538	485	472
Pended	499	481	369	264	370	445	530	601	587	547	550	541	456	496	371
Months of Inventory (Closed Sales)	3.3	3.3	4.3	2.9	4.1	3.9	3	3.1	2.8	2.8	3.4	3.2	3.2	3.2	2.9
Months of Inventory (Pended Sales)	3.7	3.5	4.2	5.3	3.4	2.7	2.5	2.3	2.6	3	3.2	3.3	3.7	3.1	3.7
Absorption Rate (Closed Sales) %	29.9	30.1	23.5	34.3	24.1	25.4	32.9	32.7	35.4	35.6	29.4	31.6	31.5	31.7	34.2
Absorption Rate (Pended Sales) %	27	28.4	23.7	18.9	29.2	37.5	40.6	43	37.9	33	30.9	30.2	26.7	32.4	26.9
Avg. Active Price	531	550	537	535	548	561	551	557	564	582	585	590	584	585	576
Avg. Sold Price	342	354	340	350	351	342	366	369	383	394	377	378	379	372	395
Avg. Sq. Ft. Price (Sold)	183	183	181	181	184	186	186	194	198	204	198	199	201	199	201
Sold/List Diff. %	98	98	98	98	98	98	98	99	99	98	98	98	99	98	98
Sold/Orig LP Diff. %	96	95	95	94	96	96	96	97	97	97	97	96	96	96	95
Days on Market	122	126	129	143	141	135	136	132	117	114	107	107	119	121	125
Median	299	300	295	295	293	283	307	324	325	320	334	324	330	332	327

All reports are published December 2016, based on data available at the end of November 2016. All reports presented are based on data supplied by the Central Oregon MLS. Neither the Association nor its MLS guarantees or is in anyway responsible for its accuracy. Data maintained by the Association or its MLS may not reflect all real estate activities in the market. Information deemed reliable but not guaranteed.

Location: Deschutes County

Property Types: All Residential Prop - All Property Statuses - All Lot Sizes

Price Range: \$0 - No Limit

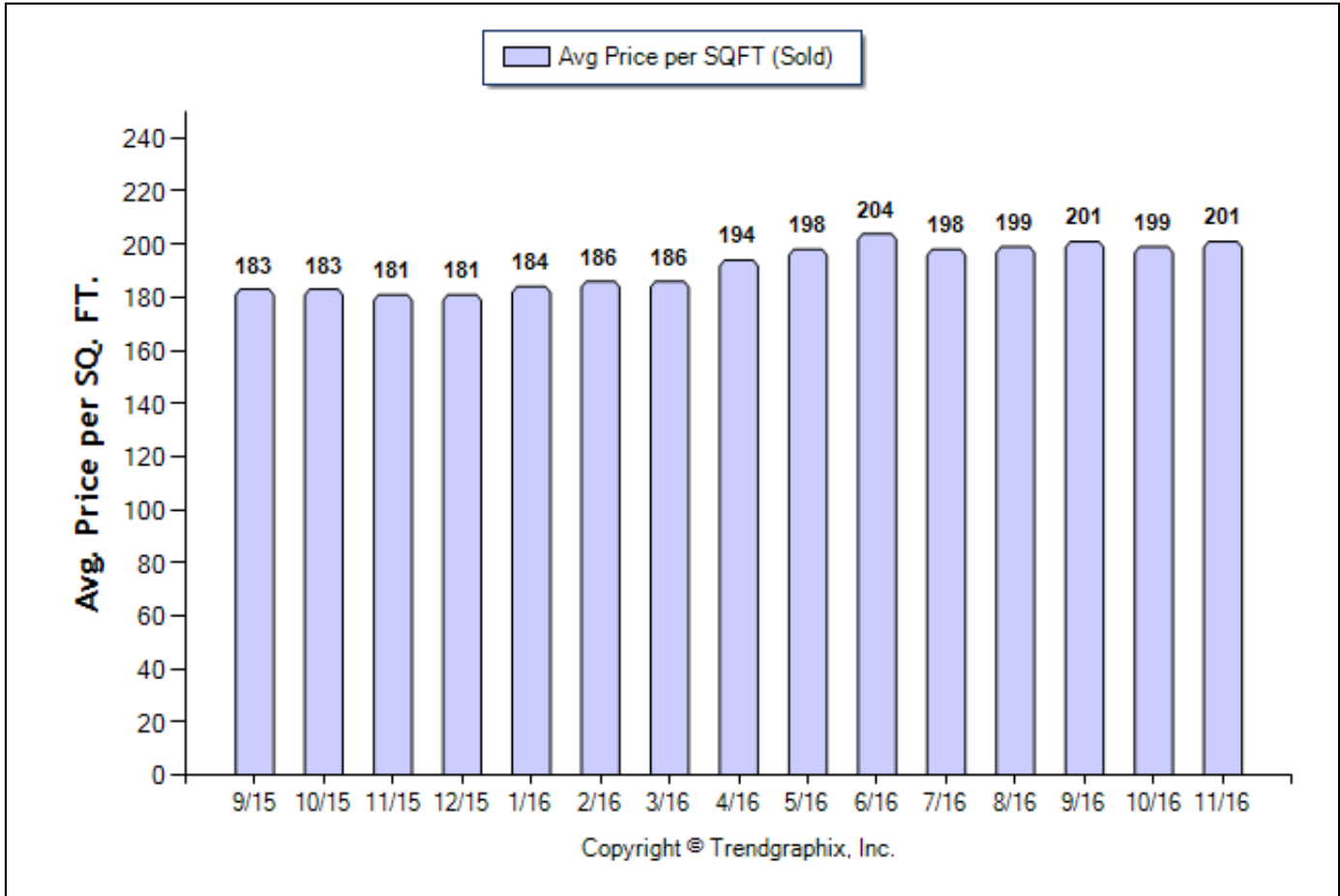
SQFT Range: 0 - No Limit

Bedrooms: 0 - No Limit

Baths: 0 - No Limit

Year Built: 0 - No Limit

Average Price per SQFT (Sold) (Sep. 2015 - Nov. 2016)



	Curnt vs. Prev Month			Curnt vs. Same Month 1 Yr Ago			Curnt vs. Same Qtr 1 Yr Ago		
	Nov. 16	Oct. 16	% Change	Nov. 16	Nov. 15	% Change	Sep. 16 to Nov. 16	Sep. 15 to Nov. 15	% Change
Avg. Sq. Ft. Price (Sold)	201	199	1% ▲	201	181	11% ▲	200.35	182.49	9.8% ▲

Date	9/15	10/15	11/15	12/15	1/16	2/16	3/16	4/16	5/16	6/16	7/16	8/16	9/16	10/16	11/16
For Sale	1849	1691	1554	1400	1268	1188	1306	1398	1548	1656	1780	1790	1706	1529	1380
New Listing	547	471	361	286	403	452	709	765	781	797	712	680	519	451	343
Sold	552	509	365	480	306	302	430	457	548	589	524	566	538	485	472
Pended	499	481	369	264	370	445	530	601	587	547	550	541	456	496	371
Months of Inventory (Closed Sales)	3.3	3.3	4.3	2.9	4.1	3.9	3	3.1	2.8	2.8	3.4	3.2	3.2	3.2	2.9
Months of Inventory (Pended Sales)	3.7	3.5	4.2	5.3	3.4	2.7	2.5	2.3	2.6	3	3.2	3.3	3.7	3.1	3.7
Absorption Rate (Closed Sales) %	29.9	30.1	23.5	34.3	24.1	25.4	32.9	32.7	35.4	35.6	29.4	31.6	31.5	31.7	34.2
Absorption Rate (Pended Sales) %	27	28.4	23.7	18.9	29.2	37.5	40.6	43	37.9	33	30.9	30.2	26.7	32.4	26.9
Avg. Active Price	531	550	537	535	548	561	551	557	564	582	585	590	584	585	576
Avg. Sold Price	342	354	340	350	351	342	366	369	383	394	377	378	379	372	395
Avg. Sq. Ft. Price (Sold)	183	183	181	181	184	186	186	194	198	204	198	199	201	199	201
Sold/List Diff. %	98	98	98	98	98	98	98	99	99	98	98	98	99	98	98
Sold/Orig LP Diff. %	96	95	95	94	96	96	96	97	97	97	97	96	96	96	95
Days on Market	122	126	129	143	141	135	136	132	117	114	107	107	119	121	125
Median	299	300	295	295	293	283	307	324	325	320	334	324	330	332	327

All reports are published December 2016, based on data available at the end of November 2016. All reports presented are based on data supplied by the Central Oregon MLS. Neither the Association nor its MLS guarantees or is in anyway responsible for its accuracy. Data maintained by the Association or its MLS may not reflect all real estate activities in the market. Information deemed reliable but not guaranteed.

Location: Deschutes County

Property Types: All Residential Prop - All Property Statuses - All Lot Sizes

Price Range: \$0 - No Limit

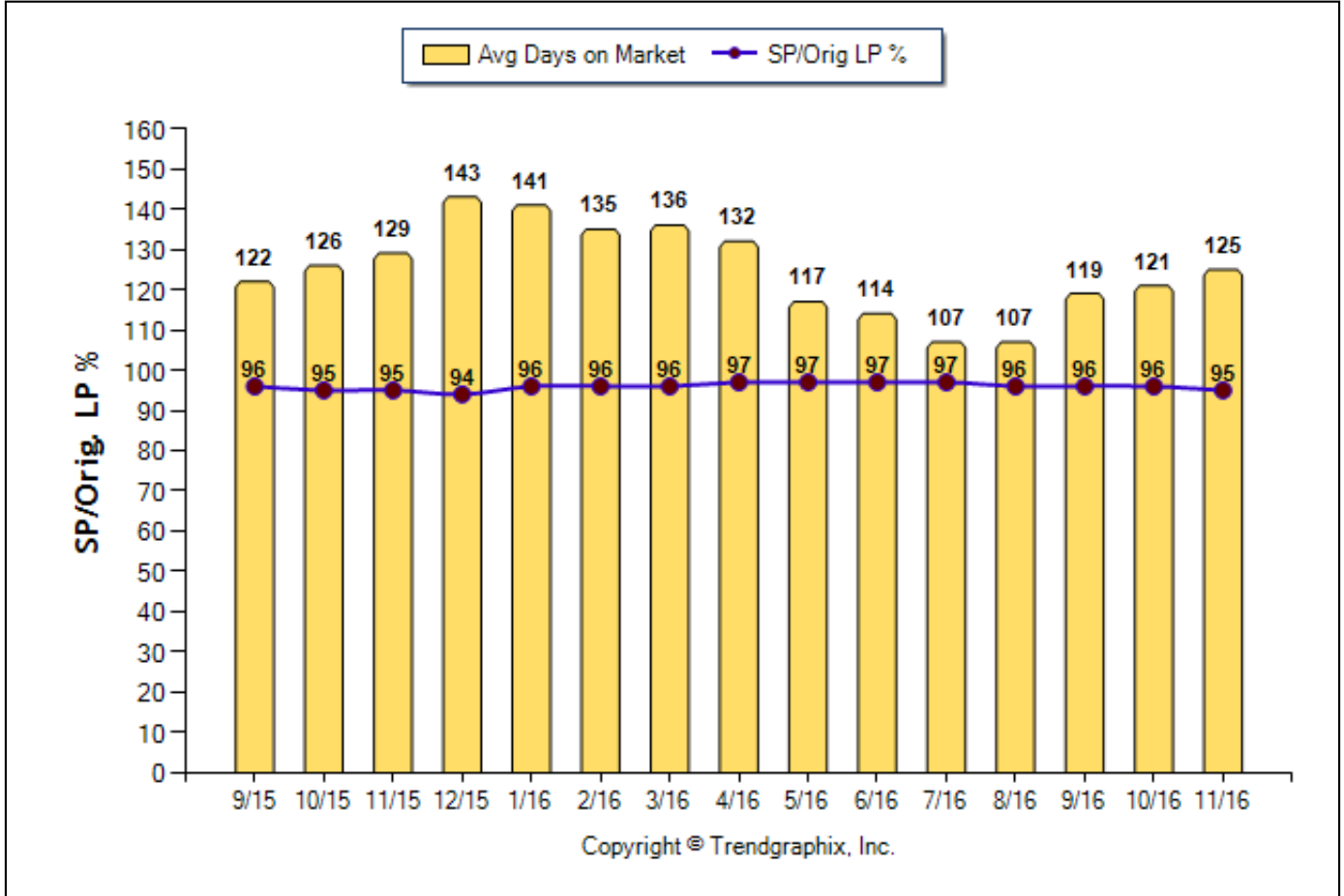
SQFT Range: 0 - No Limit

Bedrooms: 0 - No Limit

Baths: 0 - No Limit

Year Built: 0 - No Limit

Avg Days On Market & SP/Orig LP % (Sep. 2015 - Nov. 2016)



	Curnt vs. Prev Month			Curnt vs. Same Month 1 Yr Ago			Curnt vs. Same Qtr 1 Yr Ago		
	Nov. 16	Oct. 16	% Change	Nov. 16	Nov. 15	% Change	Sep. 16 to Nov. 16	Sep. 15 to Nov. 15	% Change
Days on Market	125	121	3.3% ▲	125	129	-3.1% ▼	122	125	-2.4% ▼
Sold/Orig LP Diff. %	95	96	-1% ▼	95	95	0%	96	95	1.1% ▲

Date	9/15	10/15	11/15	12/15	1/16	2/16	3/16	4/16	5/16	6/16	7/16	8/16	9/16	10/16	11/16
For Sale	1849	1691	1554	1400	1268	1188	1306	1398	1548	1656	1780	1790	1706	1529	1380
New Listing	547	471	361	286	403	452	709	765	781	797	712	680	519	451	343
Sold	552	509	365	480	306	302	430	457	548	589	524	566	538	485	472
Pended	499	481	369	264	370	445	530	601	587	547	550	541	456	496	371
Months of Inventory (Closed Sales)	3.3	3.3	4.3	2.9	4.1	3.9	3	3.1	2.8	2.8	3.4	3.2	3.2	3.2	2.9
Months of Inventory (Pended Sales)	3.7	3.5	4.2	5.3	3.4	2.7	2.5	2.3	2.6	3	3.2	3.3	3.7	3.1	3.7
Absorption Rate (Closed Sales) %	29.9	30.1	23.5	34.3	24.1	25.4	32.9	32.7	35.4	35.6	29.4	31.6	31.5	31.7	34.2
Absorption Rate (Pended Sales) %	27	28.4	23.7	18.9	29.2	37.5	40.6	43	37.9	33	30.9	30.2	26.7	32.4	26.9
Avg. Active Price	531	550	537	535	548	561	551	557	564	582	585	590	584	585	576
Avg. Sold Price	342	354	340	350	351	342	366	369	383	394	377	378	379	372	395
Avg. Sq. Ft. Price (Sold)	183	183	181	181	184	186	186	194	198	204	198	199	201	199	201
Sold/List Diff. %	98	98	98	98	98	98	98	99	99	98	98	98	99	98	98
Sold/Orig LP Diff. %	96	95	95	94	96	96	96	97	97	97	97	96	96	96	95
Days on Market	122	126	129	143	141	135	136	132	117	114	107	107	119	121	125
Median	299	300	295	295	293	283	307	324	325	320	334	324	330	332	327

All reports are published December 2016, based on data available at the end of November 2016. All reports presented are based on data supplied by the Central Oregon MLS. Neither the Association nor its MLS guarantees or is in anyway responsible for its accuracy. Data maintained by the Association or its MLS may not reflect all real estate activities in the market. Information deemed reliable but not guaranteed.

Location: Deschutes County

Property Types: All Residential Prop - All Property Statuses - All Lot Sizes

Price Range: \$0 - No Limit

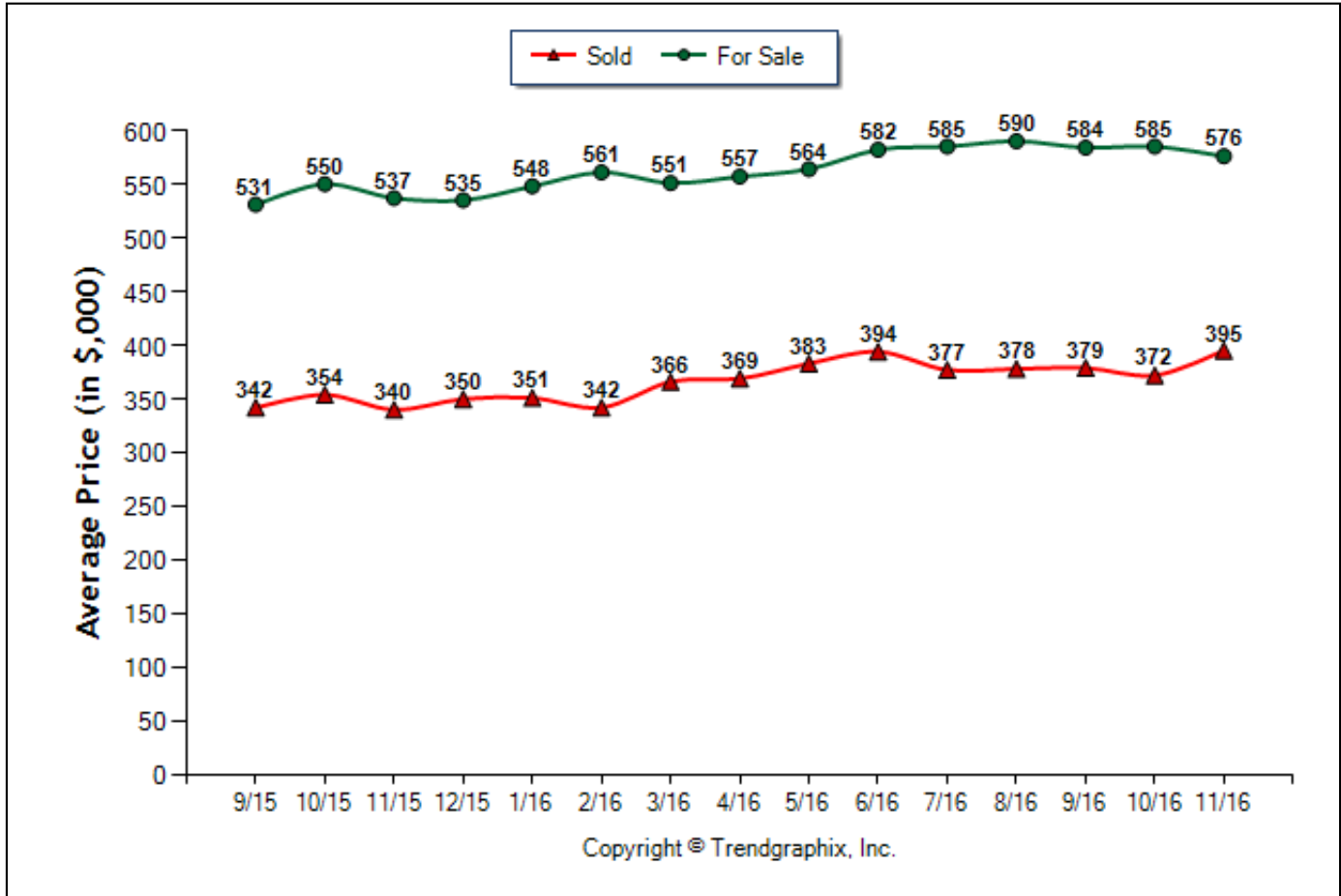
SQFT Range: 0 - No Limit

Bedrooms: 0 - No Limit

Baths: 0 - No Limit

Year Built: 0 - No Limit

Average Price of For Sale and Sold (Sep. 2015 - Nov. 2016)



	Curnt vs. Prev Month			Curnt vs. Same Month 1 Yr Ago			Curnt vs. Same Qtr 1 Yr Ago		
	Nov. 16	Oct. 16	% Change	Nov. 16	Nov. 15	% Change	Sep. 16 to Nov. 16	Sep. 15 to Nov. 15	% Change
Avg. Active Price	576	585	-1.5% ▼	576	537	7.3% ▲	582	539	8% ▲
Avg. Sold Price	395	372	6.2% ▲	395	340	16.2% ▲	382	346	10.4% ▲

Date	9/15	10/15	11/15	12/15	1/16	2/16	3/16	4/16	5/16	6/16	7/16	8/16	9/16	10/16	11/16
For Sale	1849	1691	1554	1400	1268	1188	1306	1398	1548	1656	1780	1790	1706	1529	1380
New Listing	547	471	361	286	403	452	709	765	781	797	712	680	519	451	343
Sold	552	509	365	480	306	302	430	457	548	589	524	566	538	485	472
Pended	499	481	369	264	370	445	530	601	587	547	550	541	456	496	371
Months of Inventory (Closed Sales)	3.3	3.3	4.3	2.9	4.1	3.9	3	3.1	2.8	2.8	3.4	3.2	3.2	3.2	2.9
Months of Inventory (Pended Sales)	3.7	3.5	4.2	5.3	3.4	2.7	2.5	2.3	2.6	3	3.2	3.3	3.7	3.1	3.7
Absorption Rate (Closed Sales) %	29.9	30.1	23.5	34.3	24.1	25.4	32.9	32.7	35.4	35.6	29.4	31.6	31.5	31.7	34.2
Absorption Rate (Pended Sales) %	27	28.4	23.7	18.9	29.2	37.5	40.6	43	37.9	33	30.9	30.2	26.7	32.4	26.9
Avg. Active Price	531	550	537	535	548	561	551	557	564	582	585	590	584	585	576
Avg. Sold Price	342	354	340	350	351	342	366	369	383	394	377	378	379	372	395
Avg. Sq. Ft. Price (Sold)	183	183	181	181	184	186	186	194	198	204	198	199	201	199	201
Sold/List Diff. %	98	98	98	98	98	98	98	99	99	98	98	98	99	98	98
Sold/Orig LP Diff. %	96	95	95	94	96	96	96	97	97	97	97	96	96	96	95
Days on Market	122	126	129	143	141	135	136	132	117	114	107	107	119	121	125
Median	299	300	295	295	293	283	307	324	325	320	334	324	330	332	327

All reports are published December 2016, based on data available at the end of November 2016. All reports presented are based on data supplied by the Central Oregon MLS. Neither the Association nor its MLS guarantees or is in anyway responsible for its accuracy. Data maintained by the Association or its MLS may not reflect all real estate activities in the market. Information deemed reliable but not guaranteed.

Location: Deschutes County

Property Types: All Residential Prop - All Property Statuses - All Lot Sizes

Price Range: \$0 - No Limit

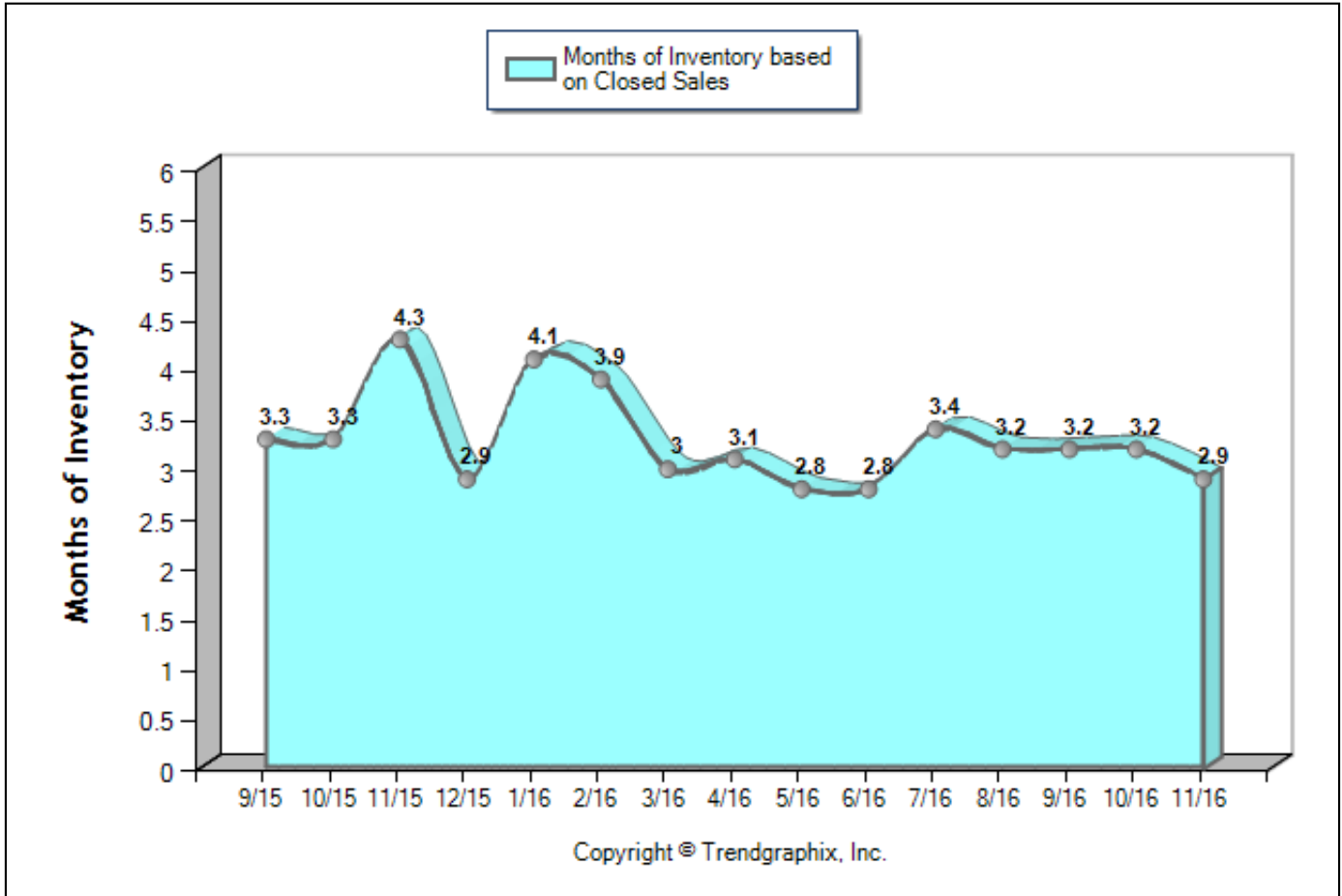
SQFT Range: 0 - No Limit

Bedrooms: 0 - No Limit

Baths: 0 - No Limit

Year Built: 0 - No Limit

Months of Inventory Based on Closed Sales (Sep. 2015 - Nov. 2016)



	Curnt vs. Prev Month			Curnt vs. Same Month 1 Yr Ago			Curnt vs. Same Qtr 1 Yr Ago		
	Nov. 16	Oct. 16	% Change	Nov. 16	Nov. 15	% Change	Sep. 16 to Nov. 16	Sep. 15 to Nov. 15	% Change
Months of Inventory (Closed Sales)	2.9	3.2	-9.5% ▼	2.9	4.3	-32.9% ▼	3.1	3.6	-14% ▼

Date	9/15	10/15	11/15	12/15	1/16	2/16	3/16	4/16	5/16	6/16	7/16	8/16	9/16	10/16	11/16
For Sale	1849	1691	1554	1400	1268	1188	1306	1398	1548	1656	1780	1790	1706	1529	1380
New Listing	547	471	361	286	403	452	709	765	781	797	712	680	519	451	343
Sold	552	509	365	480	306	302	430	457	548	589	524	566	538	485	472
Pended	499	481	369	264	370	445	530	601	587	547	550	541	456	496	371
Months of Inventory (Closed Sales)	3.3	3.3	4.3	2.9	4.1	3.9	3	3.1	2.8	2.8	3.4	3.2	3.2	3.2	2.9
Months of Inventory (Pended Sales)	3.7	3.5	4.2	5.3	3.4	2.7	2.5	2.3	2.6	3	3.2	3.3	3.7	3.1	3.7
Absorption Rate (Closed Sales) %	29.9	30.1	23.5	34.3	24.1	25.4	32.9	32.7	35.4	35.6	29.4	31.6	31.5	31.7	34.2
Absorption Rate (Pended Sales) %	27	28.4	23.7	18.9	29.2	37.5	40.6	43	37.9	33	30.9	30.2	26.7	32.4	26.9
Avg. Active Price	531	550	537	535	548	561	551	557	564	582	585	590	584	585	576
Avg. Sold Price	342	354	340	350	351	342	366	369	383	394	377	378	379	372	395
Avg. Sq. Ft. Price (Sold)	183	183	181	181	184	186	186	194	198	204	198	199	201	199	201
Sold/List Diff. %	98	98	98	98	98	98	98	99	99	98	98	98	99	98	98
Sold/Orig LP Diff. %	96	95	95	94	96	96	96	97	97	97	97	96	96	96	95
Days on Market	122	126	129	143	141	135	136	132	117	114	107	107	119	121	125
Median	299	300	295	295	293	283	307	324	325	320	334	324	330	332	327

All reports are published December 2016, based on data available at the end of November 2016. All reports presented are based on data supplied by the Central Oregon MLS. Neither the Association nor its MLS guarantees or is in anyway responsible for its accuracy. Data maintained by the Association or its MLS may not reflect all real estate activities in the market. Information deemed reliable but not guaranteed.