

Location: Deschutes County

Property Types: All Residential Prop - All Property Statuses - All Lot Sizes

Price Range: \$0 - No Limit

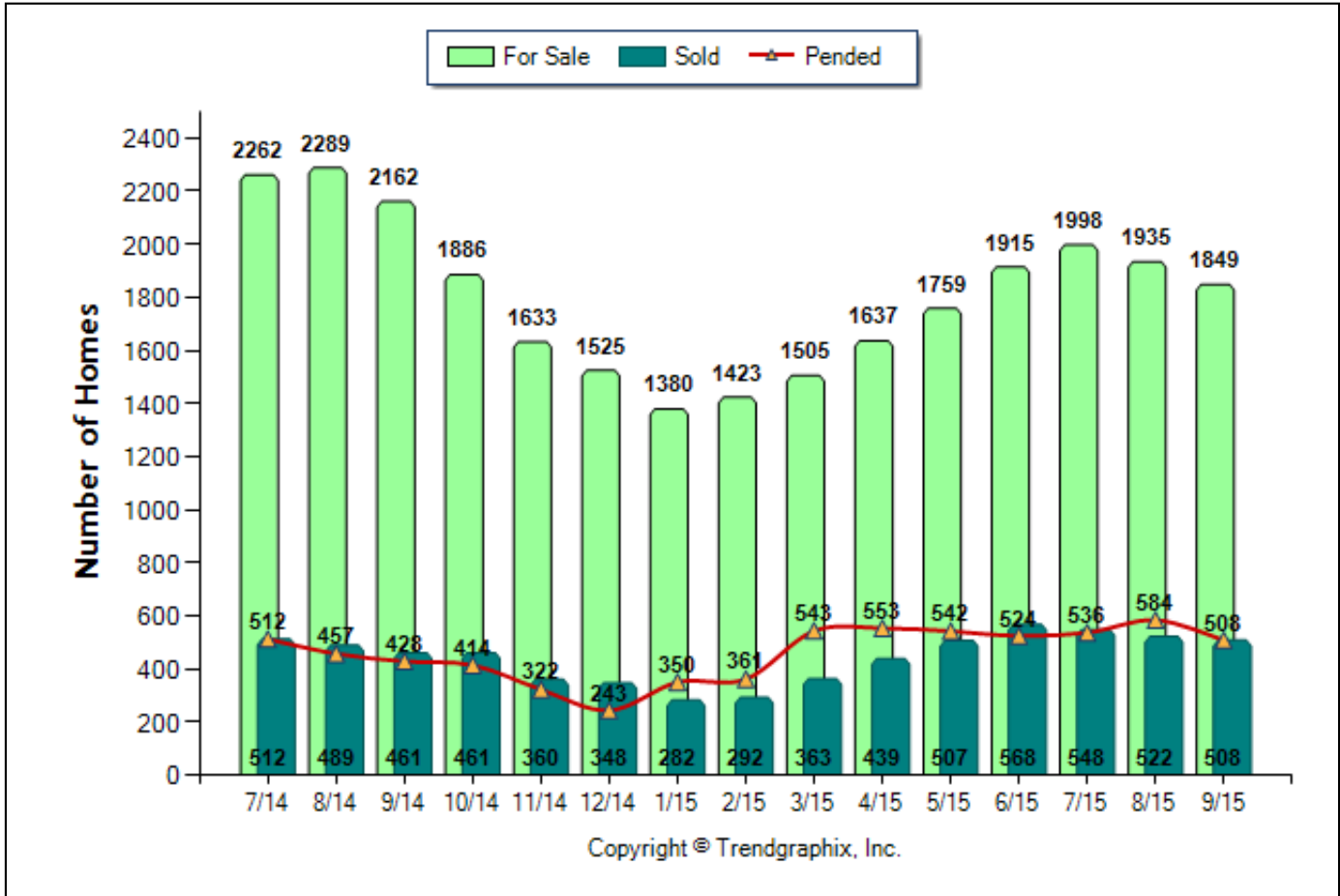
SQFT Range: 0 - No Limit

Bedrooms: 0 - No Limit

Baths: 0 - No Limit

Year Built: 0 - No Limit

Number of Homes For Sale vs. Sold vs. Pended (Jul. 2014 - Sep. 2015)



	Curnt vs. Prev Month			Curnt vs. Same Month 1 Yr Ago			Curnt vs. Same Qtr 1 Yr Ago			TODAY STATS		
	Sep. 15	Aug. 15	% Change	Sep. 15	Sep. 14	% Change	Jul. 15 to Sep. 15	Jul. 14 to Sep. 14	% Change	10/1/2015 - 10/13/2015	9/1/2015 - 9/13/2015	% Change
For Sale	1849	1935	-4.4% ▼	1849	2162	-14.5% ▼	5782	6713	-13.9% ▼	1819	1922	-5.4% ▼
Sold	508	522	-2.7% ▼	508	461	10.2% ▲	1578	1462	7.9% ▲	132	186	-29% ▼
Pended	508	584	-13% ▼	508	428	18.7% ▲	1628	1397	16.5% ▲	171	210	-18.6% ▼

Date	7/14	8/14	9/14	10/14	11/14	12/14	1/15	2/15	3/15	4/15	5/15	6/15	7/15	8/15	9/15
For Sale	2262	2289	2162	1886	1633	1525	1380	1423	1505	1637	1759	1915	1998	1935	1849
New Listing	712	599	468	389	282	250	373	494	682	774	735	772	758	644	528
Sold	512	489	461	461	360	348	282	292	363	439	507	568	548	522	508
Pended	512	457	428	414	322	243	350	361	543	553	542	524	536	584	508
Months of Inventory (Closed Sales)	4.4	4.7	4.7	4.1	4.5	4.4	4.9	4.9	4.1	3.7	3.5	3.4	3.6	3.7	3.6
Months of Inventory (Pended Sales)	4.4	5	5.1	4.6	5.1	6.3	3.9	3.9	2.8	3	3.2	3.7	3.7	3.3	3.6
Absorption Rate (Closed Sales) %	22.6	21.4	21.3	24.4	22	22.8	20.4	20.5	24.1	26.8	28.8	29.7	27.4	27	27.5
Absorption Rate (Pended Sales) %	22.6	20	19.8	22	19.7	15.9	25.4	25.4	36.1	33.8	30.8	27.4	26.8	30.2	27.5
Avg. Active Price	469	470	473	480	467	467	475	481	503	512	509	513	520	522	530
Avg. Sold Price	311	326	308	317	304	306	338	315	327	330	336	347	350	342	342
Avg. Sq. Ft. Price	164	171	165	168	162	162	172	162	175	176	172	178	181	183	183
Sold/List Diff. %	98	98	97	97	98	98	97	98	98	98	99	98	98	98	98
Sold/Orig LP Diff. %	96	96	95	94	95	94	94	94	96	97	97	96	97	97	96
Days on Market	120	116	125	140	136	154	160	149	139	137	114	118	112	111	122
Median	265	262	258	260	261	263	276	270	280	288	289	287	295	296	300

All reports are published October 2015, based on data available at the end of September 2015, except for the today stats. All reports presented are based on data supplied by the Central Oregon MLS. Neither the Association nor its MLS guarantees or is in anyway responsible for its accuracy. Data maintained by the Association or its MLS may not reflect all real estate activities in the market. Information deemed reliable but not guaranteed.

Location: Deschutes County

Property Types: All Residential Prop - All Property Statuses - All Lot Sizes

Price Range: \$0 - No Limit

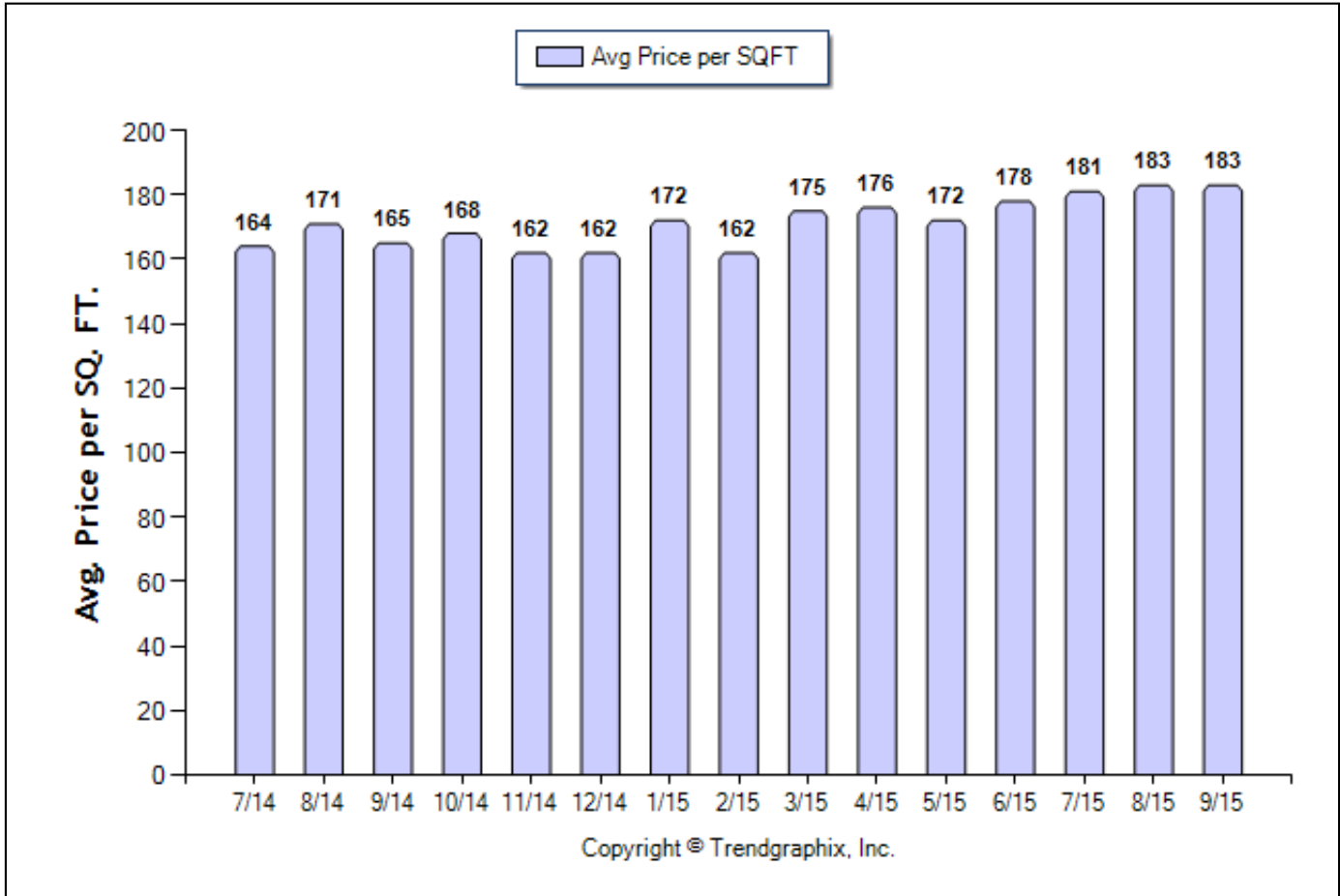
SQFT Range: 0 - No Limit

Bedrooms: 0 - No Limit

Baths: 0 - No Limit

Year Built: 0 - No Limit

Average Price per SQFT (Jul. 2014 - Sep. 2015)



	Curnt vs. Prev Month			Curnt vs. Same Month 1 Yr Ago			Curnt vs. Same Qtr 1 Yr Ago			TODAY STATS		
	Sep. 15	Aug. 15	% Change	Sep. 15	Sep. 14	% Change	Jul. 15 to Sep. 15	Jul. 14 to Sep. 14	% Change	10/1/2015 - 10/13/2015	9/1/2015 - 9/13/2015	% Change
Avg. Sq. Ft. Price	183.3	182.9	0.2% ▲	183.3	164.8	11.2% ▲	182.3	166.5	9.5% ▲	170	171	-0.6% ▼

Date	7/14	8/14	9/14	10/14	11/14	12/14	1/15	2/15	3/15	4/15	5/15	6/15	7/15	8/15	9/15
For Sale	2262	2289	2162	1886	1633	1525	1380	1423	1505	1637	1759	1915	1998	1935	1849
New Listing	712	599	468	389	282	250	373	494	682	774	735	772	758	644	528
Sold	512	489	461	461	360	348	282	292	363	439	507	568	548	522	508
Pended	512	457	428	414	322	243	350	361	543	553	542	524	536	584	508
Months of Inventory (Closed Sales)	4.4	4.7	4.7	4.1	4.5	4.4	4.9	4.9	4.1	3.7	3.5	3.4	3.6	3.7	3.6
Months of Inventory (Pended Sales)	4.4	5	5.1	4.6	5.1	6.3	3.9	3.9	2.8	3	3.2	3.7	3.7	3.3	3.6
Absorption Rate (Closed Sales) %	22.6	21.4	21.3	24.4	22	22.8	20.4	20.5	24.1	26.8	28.8	29.7	27.4	27	27.5
Absorption Rate (Pended Sales) %	22.6	20	19.8	22	19.7	15.9	25.4	25.4	36.1	33.8	30.8	27.4	26.8	30.2	27.5
Avg. Active Price	469	470	473	480	467	467	475	481	503	512	509	513	520	522	530
Avg. Sold Price	311	326	308	317	304	306	338	315	327	330	336	347	350	342	342
Avg. Sq. Ft. Price	164	171	165	168	162	162	172	162	175	176	172	178	181	183	183
Sold/List Diff. %	98	98	97	97	98	98	97	98	98	98	99	98	98	98	98
Sold/Orig LP Diff. %	96	96	95	94	95	94	94	94	96	97	97	96	97	97	96
Days on Market	120	116	125	140	136	154	160	149	139	137	114	118	112	111	122
Median	265	262	258	260	261	263	276	270	280	288	289	287	295	296	300

All reports are published October 2015, based on data available at the end of September 2015, except for the today stats. All reports presented are based on data supplied by the Central Oregon MLS. Neither the Association nor its MLS guarantees or is in anyway responsible for its accuracy. Data maintained by the Association or its MLS may not reflect all real estate activities in the market. Information deemed reliable but not guaranteed.

Location: Deschutes County

Property Types: All Residential Prop - All Property Statuses - All Lot Sizes

Price Range: \$0 - No Limit

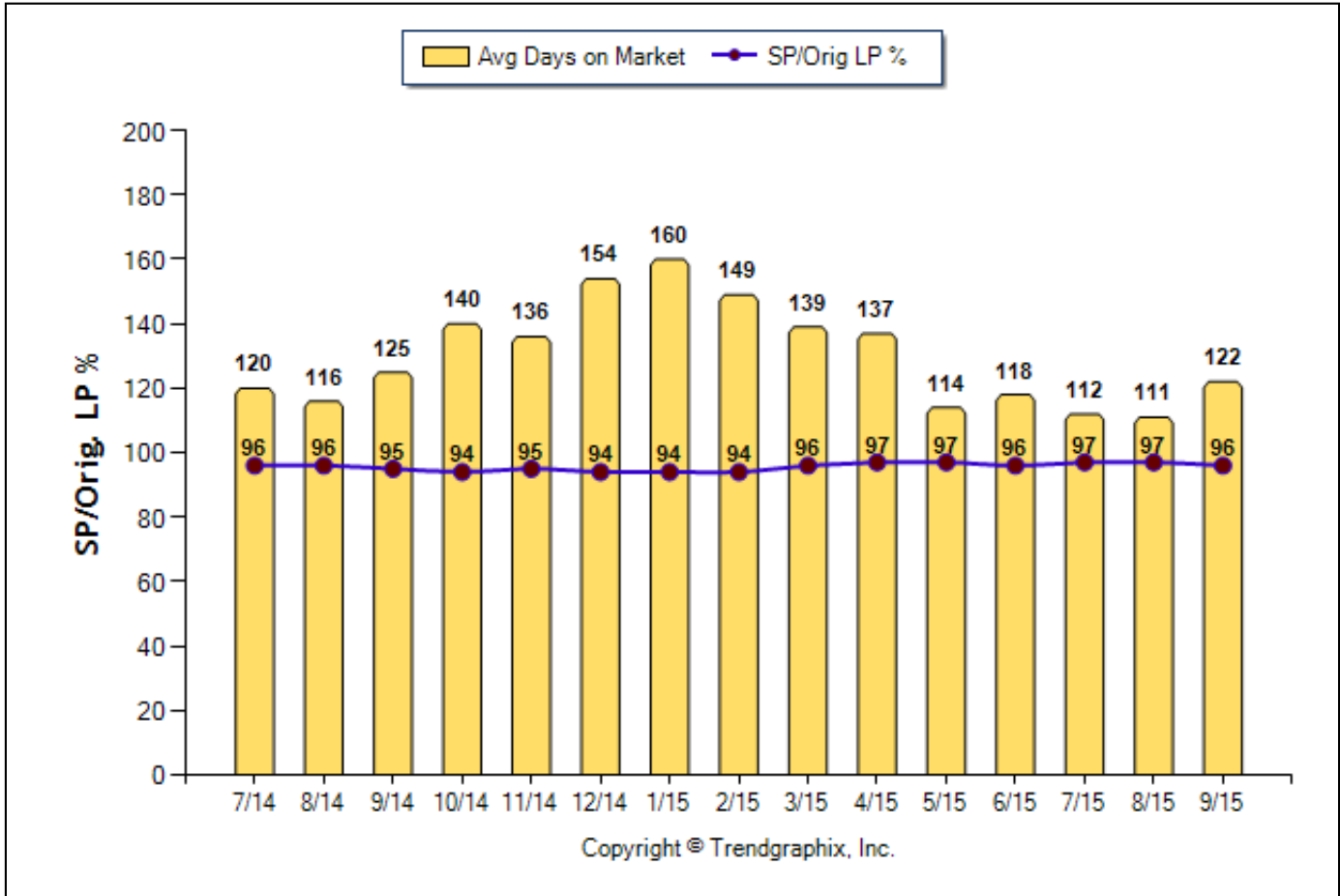
SQFT Range: 0 - No Limit

Bedrooms: 0 - No Limit

Baths: 0 - No Limit

Year Built: 0 - No Limit

Avg Days On Market & SP/Orig LP % (Jul. 2014 - Sep. 2015)



	Curnt vs. Prev Month			Curnt vs. Same Month 1 Yr Ago			Curnt vs. Same Qtr 1 Yr Ago			TODAY STATS		
	Sep. 15	Aug. 15	% Change	Sep. 15	Sep. 14	% Change	Jul. 15 to Sep. 15	Jul. 14 to Sep. 14	% Change	10/1/2015 - 10/13/2015	9/1/2015 - 9/13/2015	% Change
Days on Market	122	111	9.9% ▲	122	125	-2.4% ▼	115	120	-4.2% ▼	132	123	7.3% ▲
Sold/Orig LP Diff. %	96	97	-1% ▼	96	95	1.1% ▲	97	96	1% ▲	96	95	1.1% ▲

Date	7/14	8/14	9/14	10/14	11/14	12/14	1/15	2/15	3/15	4/15	5/15	6/15	7/15	8/15	9/15
For Sale	2262	2289	2162	1886	1633	1525	1380	1423	1505	1637	1759	1915	1998	1935	1849
New Listing	712	599	468	389	282	250	373	494	682	774	735	772	758	644	528
Sold	512	489	461	461	360	348	282	292	363	439	507	568	548	522	508
Pended	512	457	428	414	322	243	350	361	543	553	542	524	536	584	508
Months of Inventory (Closed Sales)	4.4	4.7	4.7	4.1	4.5	4.4	4.9	4.9	4.1	3.7	3.5	3.4	3.6	3.7	3.6
Months of Inventory (Pended Sales)	4.4	5	5.1	4.6	5.1	6.3	3.9	3.9	2.8	3	3.2	3.7	3.7	3.3	3.6
Absorption Rate (Closed Sales) %	22.6	21.4	21.3	24.4	22	22.8	20.4	20.5	24.1	26.8	28.8	29.7	27.4	27	27.5
Absorption Rate (Pended Sales) %	22.6	20	19.8	22	19.7	15.9	25.4	25.4	36.1	33.8	30.8	27.4	26.8	30.2	27.5
Avg. Active Price	469	470	473	480	467	467	475	481	503	512	509	513	520	522	530
Avg. Sold Price	311	326	308	317	304	306	338	315	327	330	336	347	350	342	342
Avg. Sq. Ft. Price	164	171	165	168	162	162	172	162	175	176	172	178	181	183	183
Sold/List Diff. %	98	98	97	97	98	98	97	98	98	98	99	98	98	98	98
Sold/Orig LP Diff. %	96	96	95	94	95	94	94	94	96	97	97	96	97	97	96
Days on Market	120	116	125	140	136	154	160	149	139	137	114	118	112	111	122
Median	265	262	258	260	261	263	276	270	280	288	289	287	295	296	300

All reports are published October 2015, based on data available at the end of September 2015, except for the today stats. All reports presented are based on data supplied by the Central Oregon MLS. Neither the Association nor its MLS guarantees or is in anyway responsible for its accuracy. Data maintained by the Association or its MLS may not reflect all real estate activities in the market. Information deemed reliable but not guaranteed.

Location: Deschutes County

Property Types: All Residential Prop - All Property Statuses - All Lot Sizes

Price Range: \$0 - No Limit

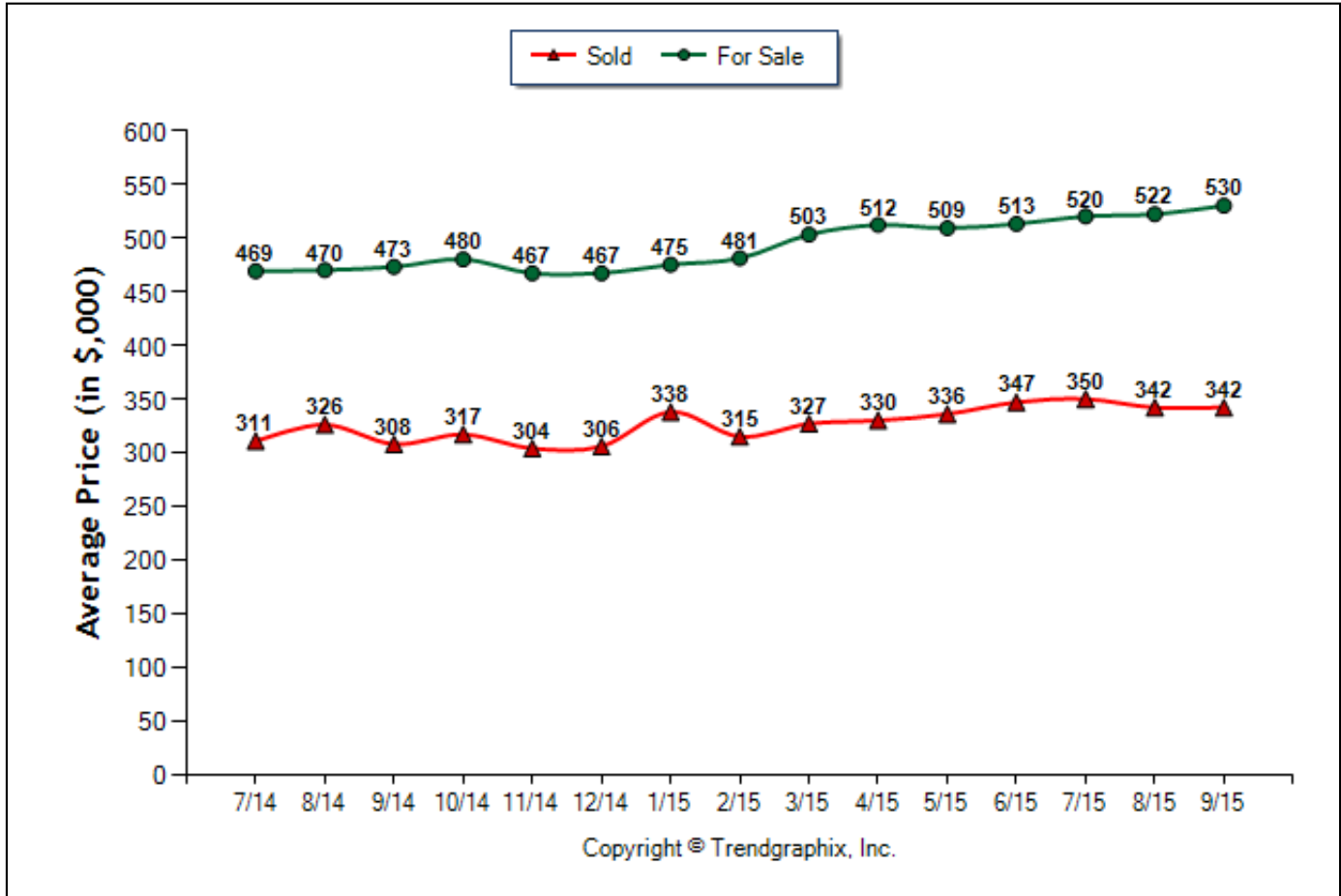
SQFT Range: 0 - No Limit

Bedrooms: 0 - No Limit

Baths: 0 - No Limit

Year Built: 0 - No Limit

Average Price of For Sale and Sold (Jul. 2014 - Sep. 2015)



	Curnt vs. Prev Month			Curnt vs. Same Month 1 Yr Ago			Curnt vs. Same Qtr 1 Yr Ago			TODAY STATS		
	Sep. 15	Aug. 15	% Change	Sep. 15	Sep. 14	% Change	Jul. 15 to Sep. 15	Jul. 14 to Sep. 14	% Change	10/1/2015 - 10/13/2015	9/1/2015 - 9/13/2015	% Change
Avg. Active Price	530	522	1.5% ▲	530	473	12.1% ▲	524	471	11.3% ▲	531	522	1.7% ▲
Avg. Sold Price	342	342	0%	342	308	11% ▲	345	315	9.5% ▲	315	320	-1.6% ▼

Date	7/14	8/14	9/14	10/14	11/14	12/14	1/15	2/15	3/15	4/15	5/15	6/15	7/15	8/15	9/15
For Sale	2262	2289	2162	1886	1633	1525	1380	1423	1505	1637	1759	1915	1998	1935	1849
New Listing	712	599	468	389	282	250	373	494	682	774	735	772	758	644	528
Sold	512	489	461	461	360	348	282	292	363	439	507	568	548	522	508
Pended	512	457	428	414	322	243	350	361	543	553	542	524	536	584	508
Months of Inventory (Closed Sales)	4.4	4.7	4.7	4.1	4.5	4.4	4.9	4.9	4.1	3.7	3.5	3.4	3.6	3.7	3.6
Months of Inventory (Pended Sales)	4.4	5	5.1	4.6	5.1	6.3	3.9	3.9	2.8	3	3.2	3.7	3.7	3.3	3.6
Absorption Rate (Closed Sales) %	22.6	21.4	21.3	24.4	22	22.8	20.4	20.5	24.1	26.8	28.8	29.7	27.4	27	27.5
Absorption Rate (Pended Sales) %	22.6	20	19.8	22	19.7	15.9	25.4	25.4	36.1	33.8	30.8	27.4	26.8	30.2	27.5
Avg. Active Price	469	470	473	480	467	467	475	481	503	512	509	513	520	522	530
Avg. Sold Price	311	326	308	317	304	306	338	315	327	330	336	347	350	342	342
Avg. Sq. Ft. Price	164	171	165	168	162	162	172	162	175	176	172	178	181	183	183
Sold/List Diff. %	98	98	97	97	98	98	97	98	98	98	99	98	98	98	98
Sold/Orig LP Diff. %	96	96	95	94	95	94	94	94	96	97	97	96	97	97	96
Days on Market	120	116	125	140	136	154	160	149	139	137	114	118	112	111	122
Median	265	262	258	260	261	263	276	270	280	288	289	287	295	296	300

All reports are published October 2015, based on data available at the end of September 2015, except for the today stats. All reports presented are based on data supplied by the Central Oregon MLS. Neither the Association nor its MLS guarantees or is in anyway responsible for its accuracy. Data maintained by the Association or its MLS may not reflect all real estate activities in the market. Information deemed reliable but not guaranteed.

Location: Deschutes County

Property Types: All Residential Prop - All Property Statuses - All Lot Sizes

Price Range: \$0 - No Limit

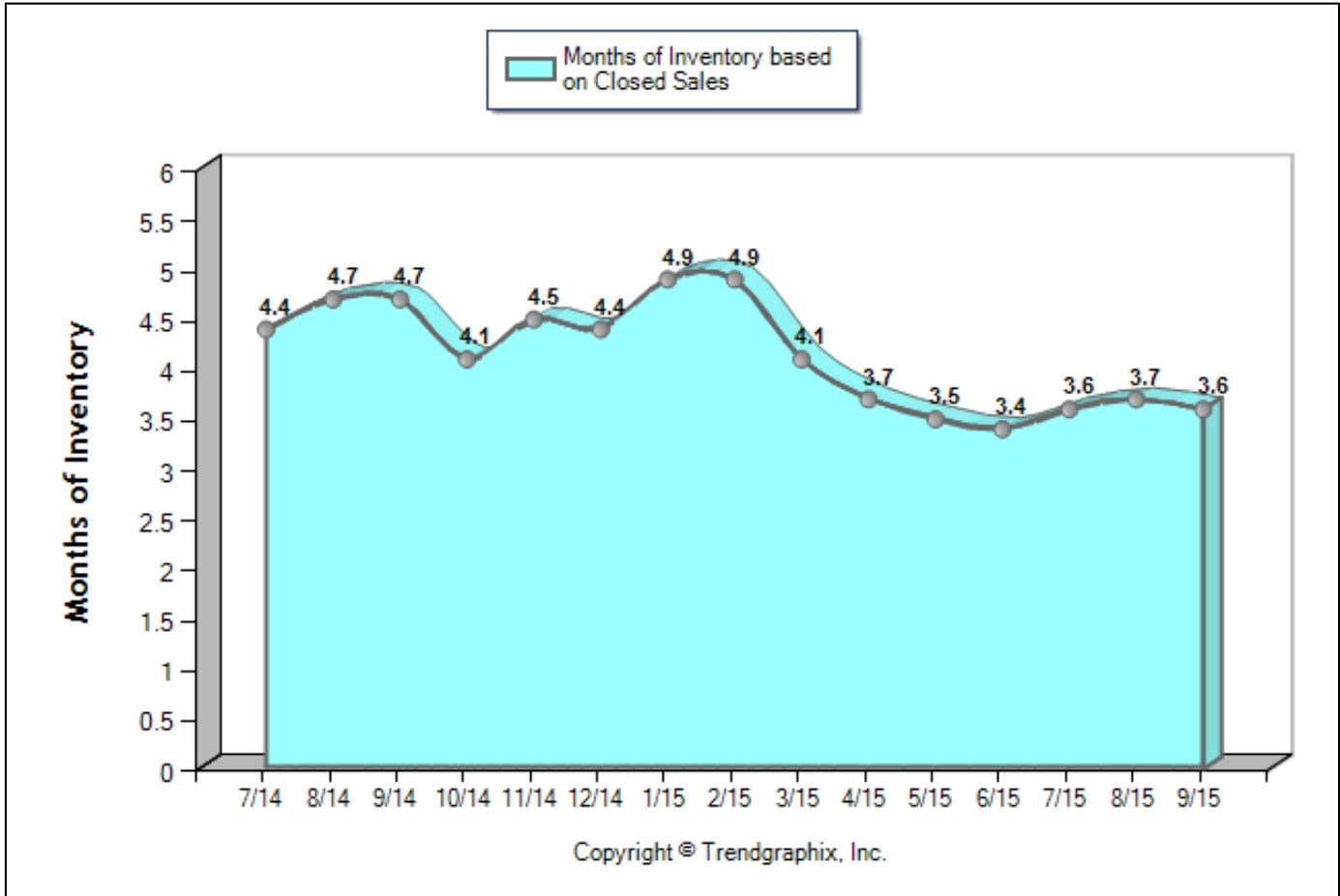
SQFT Range: 0 - No Limit

Bedrooms: 0 - No Limit

Baths: 0 - No Limit

Year Built: 0 - No Limit

Months of Inventory Based on Closed Sales (Jul. 2014 - Sep. 2015)



	Curnt vs. Prev Month			Curnt vs. Same Month 1 Yr Ago			Curnt vs. Same Qtr 1 Yr Ago			TODAY STATS		
	Sep. 15	Aug. 15	% Change	Sep. 15	Sep. 14	% Change	Jul. 15 to Sep. 15	Jul. 14 to Sep. 14	% Change	10/1/2015 - 10/13/2015	9/1/2015 - 9/13/2015	% Change
Months of Inventory (Closed Sales)	3.6	3.7	-2.7% ▼	3.6	4.7	-23.5% ▼	3.7	4.6	-19.6% ▼	13.8	10.3	33.9% ▲

Date	7/14	8/14	9/14	10/14	11/14	12/14	1/15	2/15	3/15	4/15	5/15	6/15	7/15	8/15	9/15
For Sale	2262	2289	2162	1886	1633	1525	1380	1423	1505	1637	1759	1915	1998	1935	1849
New Listing	712	599	468	389	282	250	373	494	682	774	735	772	758	644	528
Sold	512	489	461	461	360	348	282	292	363	439	507	568	548	522	508
Pended	512	457	428	414	322	243	350	361	543	553	542	524	536	584	508
Months of Inventory (Closed Sales)	4.4	4.7	4.7	4.1	4.5	4.4	4.9	4.9	4.1	3.7	3.5	3.4	3.6	3.7	3.6
Months of Inventory (Pended Sales)	4.4	5	5.1	4.6	5.1	6.3	3.9	3.9	2.8	3	3.2	3.7	3.7	3.3	3.6
Absorption Rate (Closed Sales) %	22.6	21.4	21.3	24.4	22	22.8	20.4	20.5	24.1	26.8	28.8	29.7	27.4	27	27.5
Absorption Rate (Pended Sales) %	22.6	20	19.8	22	19.7	15.9	25.4	25.4	36.1	33.8	30.8	27.4	26.8	30.2	27.5
Avg. Active Price	469	470	473	480	467	467	475	481	503	512	509	513	520	522	530
Avg. Sold Price	311	326	308	317	304	306	338	315	327	330	336	347	350	342	342
Avg. Sq. Ft. Price	164	171	165	168	162	162	172	162	175	176	172	178	181	183	183
Sold/List Diff. %	98	98	97	97	98	98	97	98	98	98	99	98	98	98	98
Sold/Orig LP Diff. %	96	96	95	94	95	94	94	94	96	97	97	96	97	97	96
Days on Market	120	116	125	140	136	154	160	149	139	137	114	118	112	111	122
Median	265	262	258	260	261	263	276	270	280	288	289	287	295	296	300

All reports are published October 2015, based on data available at the end of September 2015, except for the today stats. All reports presented are based on data supplied by the Central Oregon MLS. Neither the Association nor its MLS guarantees or is in anyway responsible for its accuracy. Data maintained by the Association or its MLS may not reflect all real estate activities in the market. Information deemed reliable but not guaranteed.