

Location: Deschutes County

Property Types: All Residential Prop - All Property Statuses - All Lot Sizes

Price Range: \$0 - No Limit

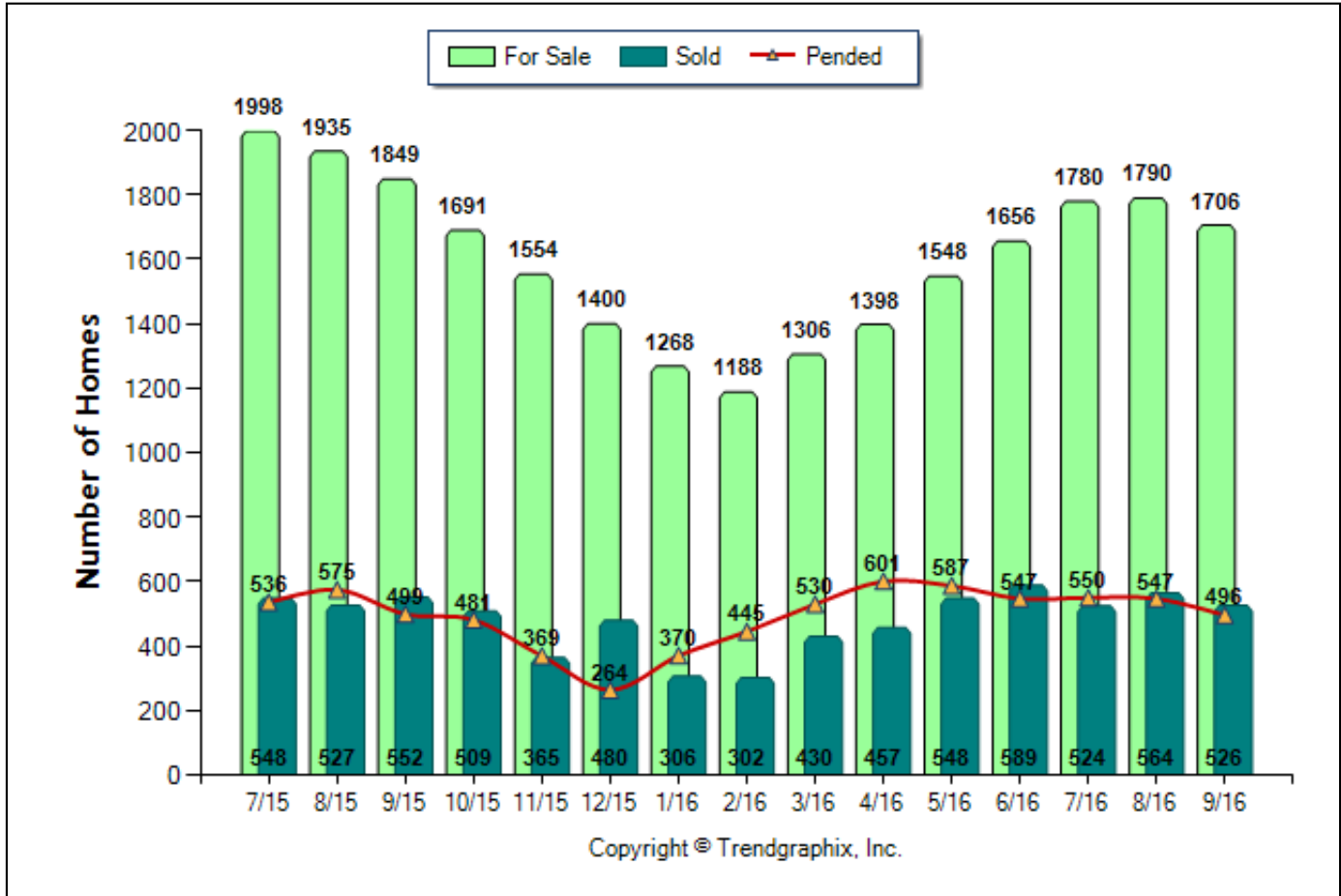
SQFT Range: 0 - No Limit

Bedrooms: 0 - No Limit

Baths: 0 - No Limit

Year Built: 0 - No Limit

Number of Homes For Sale vs. Sold vs. Pended (Jul. 2015 - Sep. 2016)



	Curnt vs. Prev Month			Curnt vs. Same Month 1 Yr Ago			Curnt vs. Same Qtr 1 Yr Ago		
	Sep. 16	Aug. 16	% Change	Sep. 16	Sep. 15	% Change	Jul. 16 to Sep. 16	Jul. 15 to Sep. 15	% Change
For Sale	1706	1790	-4.7% ▼	1706	1849	-7.7% ▼	5276	5782	-8.8% ▼
Sold	526	564	-6.7% ▼	526	552	-4.7% ▼	1614	1627	0.8% ▼
Pended	496	547	-9.3% ▼	496	499	0.6% ▼	1593	1610	-1.1% ▼

Date	7/15	8/15	9/15	10/15	11/15	12/15	1/16	2/16	3/16	4/16	5/16	6/16	7/16	8/16	9/16
For Sale	1998	1935	1849	1691	1554	1400	1268	1188	1306	1398	1548	1656	1780	1790	1706
New Listing	758	646	547	471	361	286	403	452	709	765	781	797	712	679	513
Sold	548	527	552	509	365	480	306	302	430	457	548	589	524	564	526
Pended	536	575	499	481	369	264	370	445	530	601	587	547	550	547	496
Months of Inventory (Closed Sales)	3.6	3.7	3.3	3.3	4.3	2.9	4.1	3.9	3	3.1	2.8	2.8	3.4	3.2	3.2
Months of Inventory (Pended Sales)	3.7	3.4	3.7	3.5	4.2	5.3	3.4	2.7	2.5	2.3	2.6	3	3.2	3.3	3.4
Absorption Rate (Closed Sales) %	27.4	27.2	29.9	30.1	23.5	34.3	24.1	25.4	32.9	32.7	35.4	35.6	29.4	31.5	30.8
Absorption Rate (Pended Sales) %	26.8	29.7	27	28.4	23.7	18.9	29.2	37.5	40.6	43	37.9	33	30.9	30.6	29.1
Avg. Active Price	520	523	531	550	537	535	548	561	551	557	564	582	585	590	584
Avg. Sold Price	350	341	342	354	340	350	351	342	366	369	383	394	377	378	380
Avg. Sq. Ft. Price (Sold)	181	183	183	183	181	181	184	186	186	194	198	204	198	199	200
Sold/List Diff. %	98	98	98	98	98	98	98	98	98	99	99	98	98	98	99
Sold/Orig LP Diff. %	97	97	96	95	95	94	96	96	96	97	97	97	97	96	96
Days on Market	112	111	122	126	129	143	141	135	136	132	117	114	107	107	120
Median	295	296	299	300	295	295	293	283	307	324	325	320	334	325	330

All reports are published October 2016, based on data available at the end of September 2016. All reports presented are based on data supplied by the Central Oregon MLS. Neither the Association nor its MLS guarantees or is in anyway responsible for its accuracy. Data maintained by the Association or its MLS may not reflect all real estate activities in the market. Information deemed reliable but not guaranteed.

Location: Deschutes County

Property Types: All Residential Prop - All Property Statuses - All Lot Sizes

Price Range: \$0 - No Limit

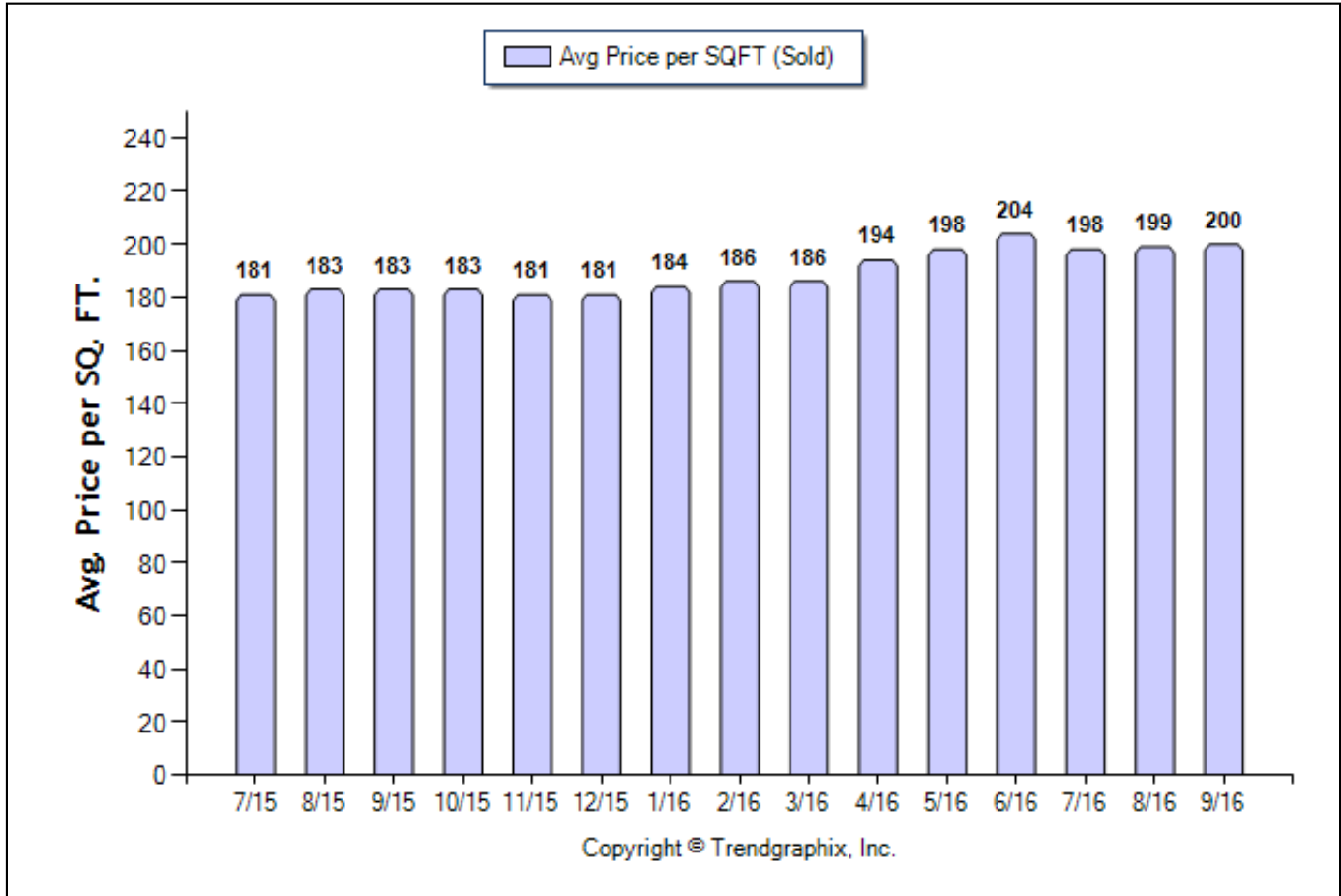
SQFT Range: 0 - No Limit

Bedrooms: 0 - No Limit

Baths: 0 - No Limit

Year Built: 0 - No Limit

Average Price per SQFT (Sold) (Jul. 2015 - Sep. 2016)



	Curnt vs. Prev Month			Curnt vs. Same Month 1 Yr Ago			Curnt vs. Same Qtr 1 Yr Ago		
	Sep. 16	Aug. 16	% Change	Sep. 16	Sep. 15	% Change	Jul. 16 to Sep. 16	Jul. 15 to Sep. 15	% Change
Avg. Sq. Ft. Price (Sold)	200	199	0.5% ▲	200	183	9.3% ▲	199	182.33	9.1% ▲

Date	7/15	8/15	9/15	10/15	11/15	12/15	1/16	2/16	3/16	4/16	5/16	6/16	7/16	8/16	9/16
For Sale	1998	1935	1849	1691	1554	1400	1268	1188	1306	1398	1548	1656	1780	1790	1706
New Listing	758	646	547	471	361	286	403	452	709	765	781	797	712	679	513
Sold	548	527	552	509	365	480	306	302	430	457	548	589	524	564	526
Pended	536	575	499	481	369	264	370	445	530	601	587	547	550	547	496
Months of Inventory (Closed Sales)	3.6	3.7	3.3	3.3	4.3	2.9	4.1	3.9	3	3.1	2.8	2.8	3.4	3.2	3.2
Months of Inventory (Pended Sales)	3.7	3.4	3.7	3.5	4.2	5.3	3.4	2.7	2.5	2.3	2.6	3	3.2	3.3	3.4
Absorption Rate (Closed Sales) %	27.4	27.2	29.9	30.1	23.5	34.3	24.1	25.4	32.9	32.7	35.4	35.6	29.4	31.5	30.8
Absorption Rate (Pended Sales) %	26.8	29.7	27	28.4	23.7	18.9	29.2	37.5	40.6	43	37.9	33	30.9	30.6	29.1
Avg. Active Price	520	523	531	550	537	535	548	561	551	557	564	582	585	590	584
Avg. Sold Price	350	341	342	354	340	350	351	342	366	369	383	394	377	378	380
Avg. Sq. Ft. Price (Sold)	181	183	183	183	181	181	184	186	186	194	198	204	198	199	200
Sold/List Diff. %	98	98	98	98	98	98	98	98	98	99	99	98	98	98	99
Sold/Orig LP Diff. %	97	97	96	95	95	94	96	96	96	97	97	97	97	96	96
Days on Market	112	111	122	126	129	143	141	135	136	132	117	114	107	107	120
Median	295	296	299	300	295	295	293	283	307	324	325	320	334	325	330

All reports are published October 2016, based on data available at the end of September 2016. All reports presented are based on data supplied by the Central Oregon MLS. Neither the Association nor its MLS guarantees or is in anyway responsible for its accuracy. Data maintained by the Association or its MLS may not reflect all real estate activities in the market. Information deemed reliable but not guaranteed.

Location: Deschutes County

Property Types: All Residential Prop - All Property Statuses - All Lot Sizes

Price Range: \$0 - No Limit

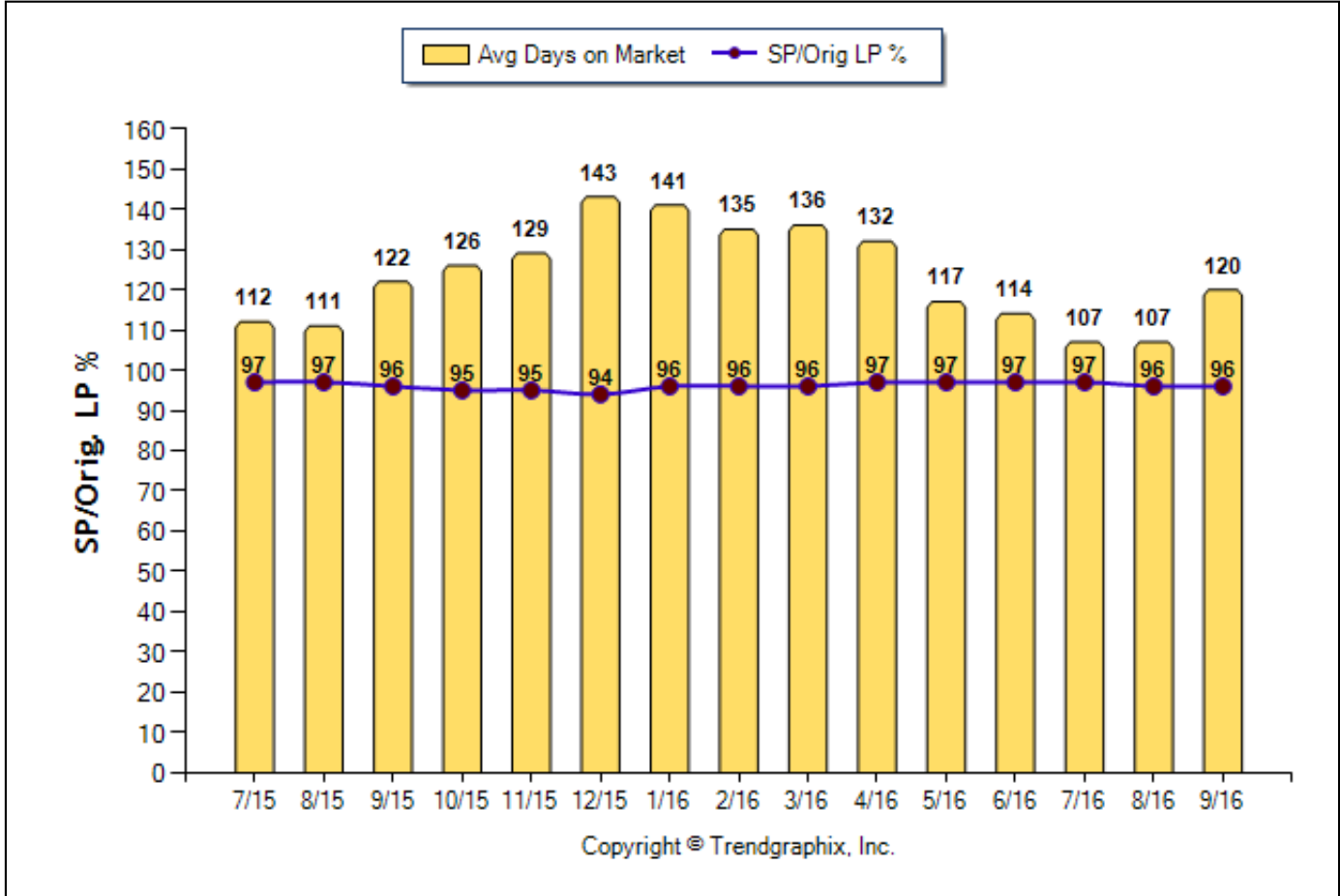
SQFT Range: 0 - No Limit

Bedrooms: 0 - No Limit

Baths: 0 - No Limit

Year Built: 0 - No Limit

Avg Days On Market & SP/Orig LP % (Jul. 2015 - Sep. 2016)



	Curnt vs. Prev Month			Curnt vs. Same Month 1 Yr Ago			Curnt vs. Same Qtr 1 Yr Ago		
	Sep. 16	Aug. 16	% Change	Sep. 16	Sep. 15	% Change	Jul. 16 to Sep. 16	Jul. 15 to Sep. 15	% Change
Days on Market	120	107	12.1% ▲	120	122	-1.6% ▼	111	115	-3.5% ▼
Sold/Orig LP Diff. %	96	96	0%	96	96	0%	96	97	-1% ▼

Date	7/15	8/15	9/15	10/15	11/15	12/15	1/16	2/16	3/16	4/16	5/16	6/16	7/16	8/16	9/16
For Sale	1998	1935	1849	1691	1554	1400	1268	1188	1306	1398	1548	1656	1780	1790	1706
New Listing	758	646	547	471	361	286	403	452	709	765	781	797	712	679	513
Sold	548	527	552	509	365	480	306	302	430	457	548	589	524	564	526
Pended	536	575	499	481	369	264	370	445	530	601	587	547	550	547	496
Months of Inventory (Closed Sales)	3.6	3.7	3.3	3.3	4.3	2.9	4.1	3.9	3	3.1	2.8	2.8	3.4	3.2	3.2
Months of Inventory (Pended Sales)	3.7	3.4	3.7	3.5	4.2	5.3	3.4	2.7	2.5	2.3	2.6	3	3.2	3.3	3.4
Absorption Rate (Closed Sales) %	27.4	27.2	29.9	30.1	23.5	34.3	24.1	25.4	32.9	32.7	35.4	35.6	29.4	31.5	30.8
Absorption Rate (Pended Sales) %	26.8	29.7	27	28.4	23.7	18.9	29.2	37.5	40.6	43	37.9	33	30.9	30.6	29.1
Avg. Active Price	520	523	531	550	537	535	548	561	551	557	564	582	585	590	584
Avg. Sold Price	350	341	342	354	340	350	351	342	366	369	383	394	377	378	380
Avg. Sq. Ft. Price (Sold)	181	183	183	183	181	181	184	186	186	194	198	204	198	199	200
Sold/List Diff. %	98	98	98	98	98	98	98	98	98	99	99	98	98	98	99
Sold/Orig LP Diff. %	97	97	96	95	95	94	96	96	96	97	97	97	97	96	96
Days on Market	112	111	122	126	129	143	141	135	136	132	117	114	107	107	120
Median	295	296	299	300	295	295	293	283	307	324	325	320	334	325	330

All reports are published October 2016, based on data available at the end of September 2016. All reports presented are based on data supplied by the Central Oregon MLS. Neither the Association nor its MLS guarantees or is in anyway responsible for its accuracy. Data maintained by the Association or its MLS may not reflect all real estate activities in the market. Information deemed reliable but not guaranteed.

Location: Deschutes County

Property Types: All Residential Prop - All Property Statuses - All Lot Sizes

Price Range: \$0 - No Limit

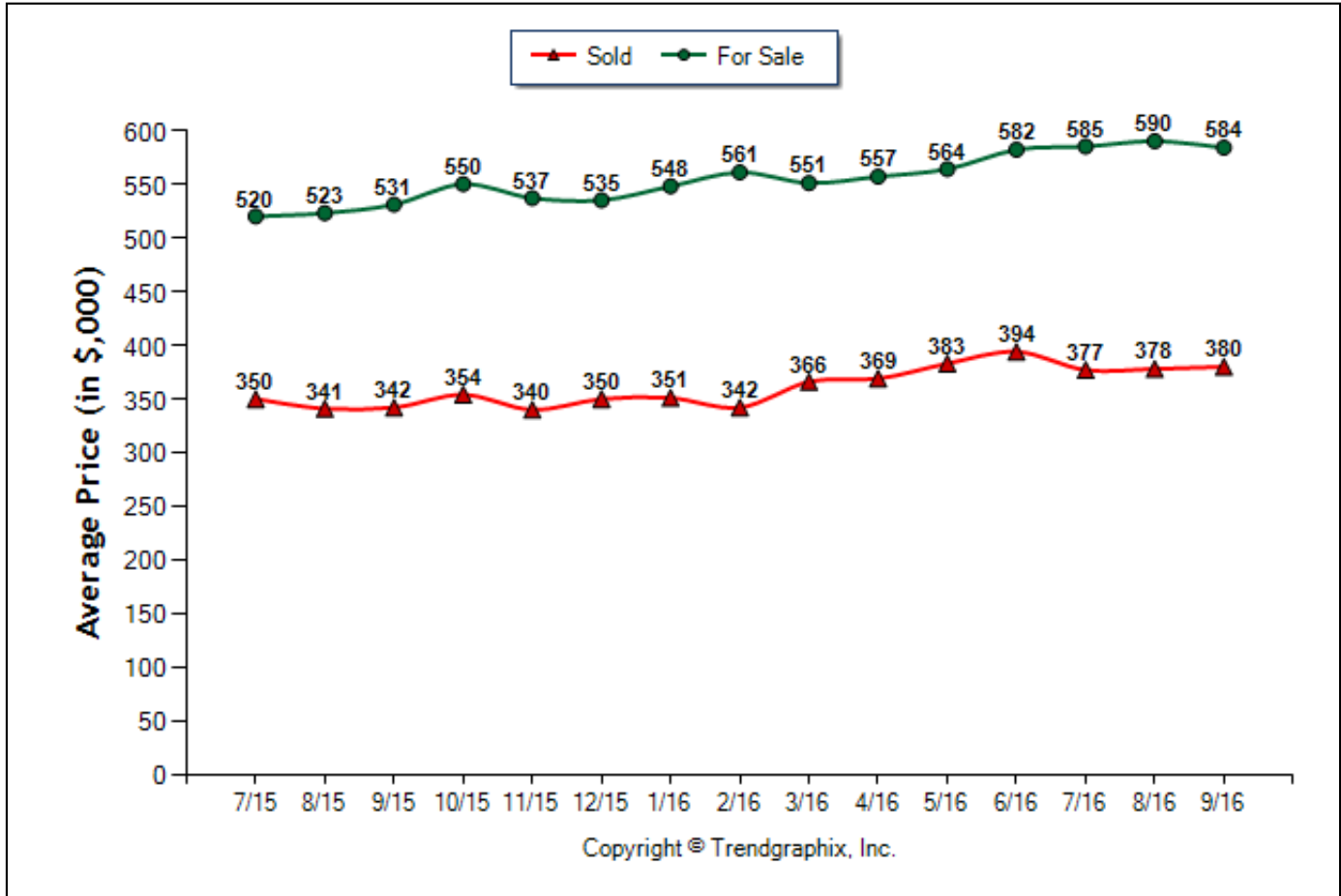
SQFT Range: 0 - No Limit

Bedrooms: 0 - No Limit

Baths: 0 - No Limit

Year Built: 0 - No Limit

Average Price of For Sale and Sold (Jul. 2015 - Sep. 2016)



	Curnt vs. Prev Month			Curnt vs. Same Month 1 Yr Ago			Curnt vs. Same Qtr 1 Yr Ago		
	Sep. 16	Aug. 16	% Change	Sep. 16	Sep. 15	% Change	Jul. 16 to Sep. 16	Jul. 15 to Sep. 15	% Change
Avg. Active Price	584	590	-1% ▼	584	531	10% ▲	586	525	11.6% ▲
Avg. Sold Price	380	378	0.5% ▲	380	342	11.1% ▲	378	344	9.9% ▲

Date	7/15	8/15	9/15	10/15	11/15	12/15	1/16	2/16	3/16	4/16	5/16	6/16	7/16	8/16	9/16
For Sale	1998	1935	1849	1691	1554	1400	1268	1188	1306	1398	1548	1656	1780	1790	1706
New Listing	758	646	547	471	361	286	403	452	709	765	781	797	712	679	513
Sold	548	527	552	509	365	480	306	302	430	457	548	589	524	564	526
Pended	536	575	499	481	369	264	370	445	530	601	587	547	550	547	496
Months of Inventory (Closed Sales)	3.6	3.7	3.3	3.3	4.3	2.9	4.1	3.9	3	3.1	2.8	2.8	3.4	3.2	3.2
Months of Inventory (Pended Sales)	3.7	3.4	3.7	3.5	4.2	5.3	3.4	2.7	2.5	2.3	2.6	3	3.2	3.3	3.4
Absorption Rate (Closed Sales) %	27.4	27.2	29.9	30.1	23.5	34.3	24.1	25.4	32.9	32.7	35.4	35.6	29.4	31.5	30.8
Absorption Rate (Pended Sales) %	26.8	29.7	27	28.4	23.7	18.9	29.2	37.5	40.6	43	37.9	33	30.9	30.6	29.1
Avg. Active Price	520	523	531	550	537	535	548	561	551	557	564	582	585	590	584
Avg. Sold Price	350	341	342	354	340	350	351	342	366	369	383	394	377	378	380
Avg. Sq. Ft. Price (Sold)	181	183	183	183	181	181	184	186	186	194	198	204	198	199	200
Sold/List Diff. %	98	98	98	98	98	98	98	98	98	99	99	98	98	98	99
Sold/Orig LP Diff. %	97	97	96	95	95	94	96	96	96	97	97	97	97	96	96
Days on Market	112	111	122	126	129	143	141	135	136	132	117	114	107	107	120
Median	295	296	299	300	295	295	293	283	307	324	325	320	334	325	330

All reports are published October 2016, based on data available at the end of September 2016. All reports presented are based on data supplied by the Central Oregon MLS. Neither the Association nor its MLS guarantees or is in anyway responsible for its accuracy. Data maintained by the Association or its MLS may not reflect all real estate activities in the market. Information deemed reliable but not guaranteed.

Location: Deschutes County

Property Types: All Residential Prop - All Property Statuses - All Lot Sizes

Price Range: \$0 - No Limit

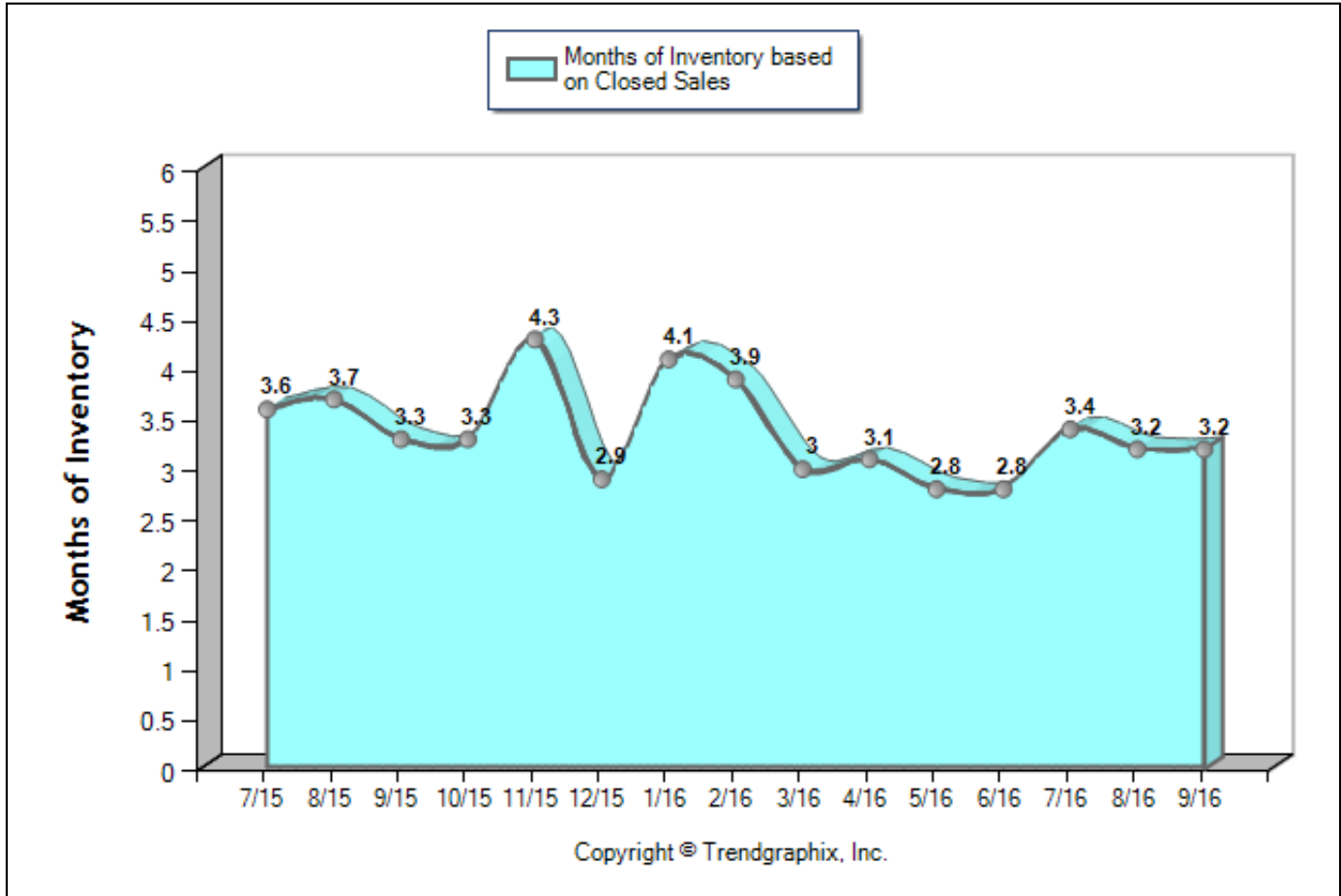
SQFT Range: 0 - No Limit

Bedrooms: 0 - No Limit

Baths: 0 - No Limit

Year Built: 0 - No Limit

Months of Inventory Based on Closed Sales (Jul. 2015 - Sep. 2016)



	Curnt vs. Prev Month			Curnt vs. Same Month 1 Yr Ago			Curnt vs. Same Qtr 1 Yr Ago		
	Sep. 16	Aug. 16	% Change	Sep. 16	Sep. 15	% Change	Jul. 16 to Sep. 16	Jul. 15 to Sep. 15	% Change
Months of Inventory (Closed Sales)	3.2	3.2	0%	3.2	3.3	-3% ▼	3.3	3.6	-8.4% ▼

Date	7/15	8/15	9/15	10/15	11/15	12/15	1/16	2/16	3/16	4/16	5/16	6/16	7/16	8/16	9/16
For Sale	1998	1935	1849	1691	1554	1400	1268	1188	1306	1398	1548	1656	1780	1790	1706
New Listing	758	646	547	471	361	286	403	452	709	765	781	797	712	679	513
Sold	548	527	552	509	365	480	306	302	430	457	548	589	524	564	526
Pended	536	575	499	481	369	264	370	445	530	601	587	547	550	547	496
Months of Inventory (Closed Sales)	3.6	3.7	3.3	3.3	4.3	2.9	4.1	3.9	3	3.1	2.8	2.8	3.4	3.2	3.2
Months of Inventory (Pended Sales)	3.7	3.4	3.7	3.5	4.2	5.3	3.4	2.7	2.5	2.3	2.6	3	3.2	3.3	3.4
Absorption Rate (Closed Sales) %	27.4	27.2	29.9	30.1	23.5	34.3	24.1	25.4	32.9	32.7	35.4	35.6	29.4	31.5	30.8
Absorption Rate (Pended Sales) %	26.8	29.7	27	28.4	23.7	18.9	29.2	37.5	40.6	43	37.9	33	30.9	30.6	29.1
Avg. Active Price	520	523	531	550	537	535	548	561	551	557	564	582	585	590	584
Avg. Sold Price	350	341	342	354	340	350	351	342	366	369	383	394	377	378	380
Avg. Sq. Ft. Price (Sold)	181	183	183	183	181	181	184	186	186	194	198	204	198	199	200
Sold/List Diff. %	98	98	98	98	98	98	98	98	98	99	99	98	98	98	99
Sold/Orig LP Diff. %	97	97	96	95	95	94	96	96	96	97	97	97	97	96	96
Days on Market	112	111	122	126	129	143	141	135	136	132	117	114	107	107	120
Median	295	296	299	300	295	295	293	283	307	324	325	320	334	325	330

All reports are published October 2016, based on data available at the end of September 2016. All reports presented are based on data supplied by the Central Oregon MLS. Neither the Association nor its MLS guarantees or is in anyway responsible for its accuracy. Data maintained by the Association or its MLS may not reflect all real estate activities in the market. Information deemed reliable but not guaranteed.